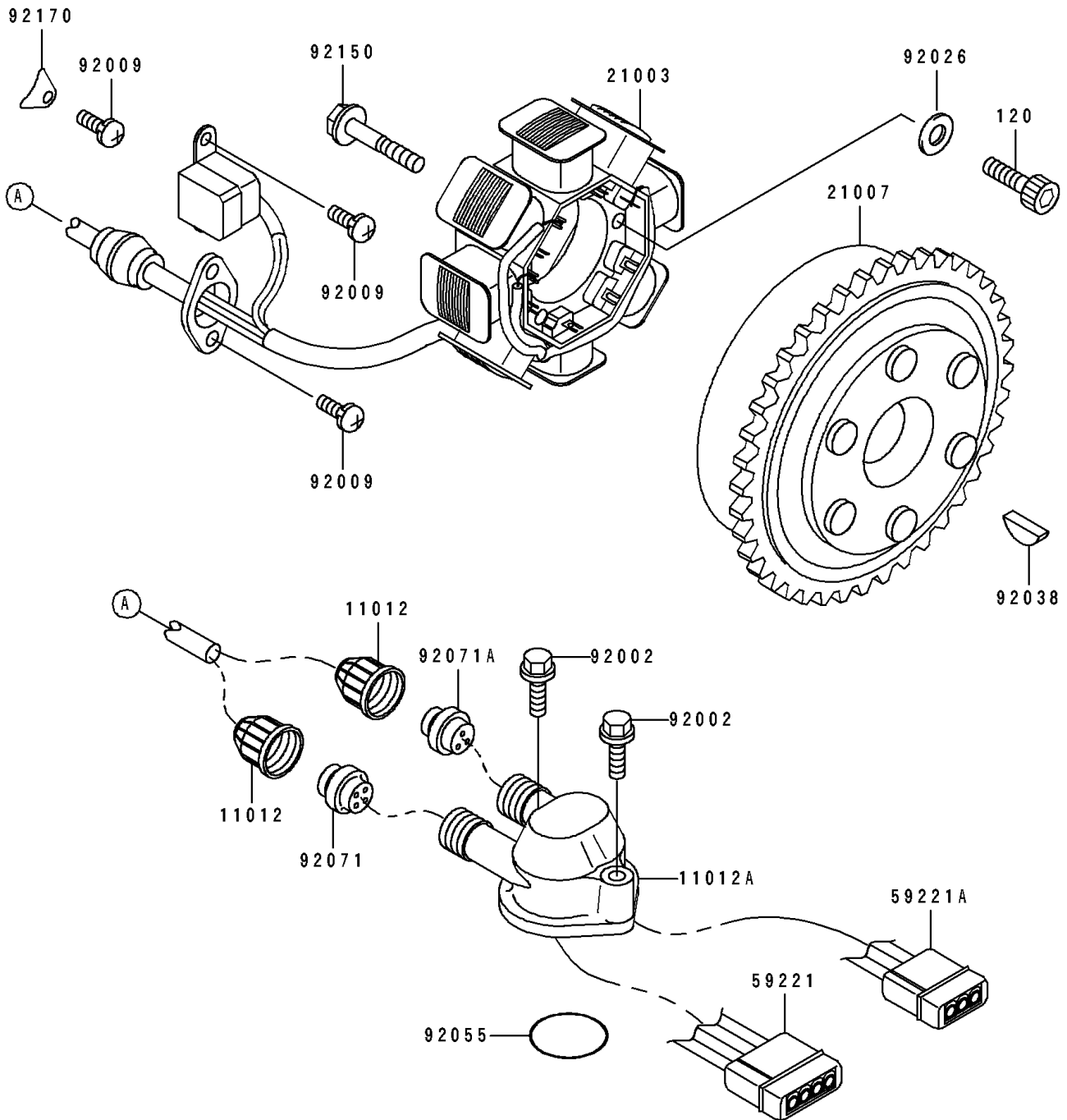


1994 ST PARTS DIAGRAM

Generator

E1810



1994 ST PARTS LIST

Generator

| ITEM NAME | PART NUMBER | QUANTITY |
|----------------------------------|-------------|----------|
| CAP (Ref # 11012) | 11012-3005 | 2 |
| CAP,ELECTRIC CASE (Ref # 11012A) | 11012-3761 | 1 |
| STATOR (Ref # 21003) | 21003-3726 | 1 |
| ROTOR,MAGNETO (Ref # 21007) | 21007-3712 | 1 |
| CONNECTOR-CORD (Ref # 59221) | 59221-3701 | 1 |
| CONNECTOR-CORD (Ref # 59221A) | 59221-3703 | 1 |
| BOLT,6X35 (Ref # 92002) | 92002-3715 | 2 |
| SCREW,5X12 (Ref # 92009) | 92009-1296 | 5 |
| SPACER,6.3X12X1.0 (Ref # 92026) | 92026-094 | 3 |
| KEY,WOODRUFF (Ref # 92038) | 92038-001 | 1 |
| RING-O (Ref # 92055) | 92055-3706 | 1 |
| GROMMET (Ref # 92071) | 92071-3784 | 1 |
| GROMMET (Ref # 92071A) | 92071-3786 | 1 |
| BOLT (Ref # 92150) | 92150-3813 | 1 |
| CLAMP,HARNEES (Ref # 92170) | 92170-3728 | 1 |
| BOLT-SOCKET,6X30 (Ref # 120) | 120P0630 | 3 |