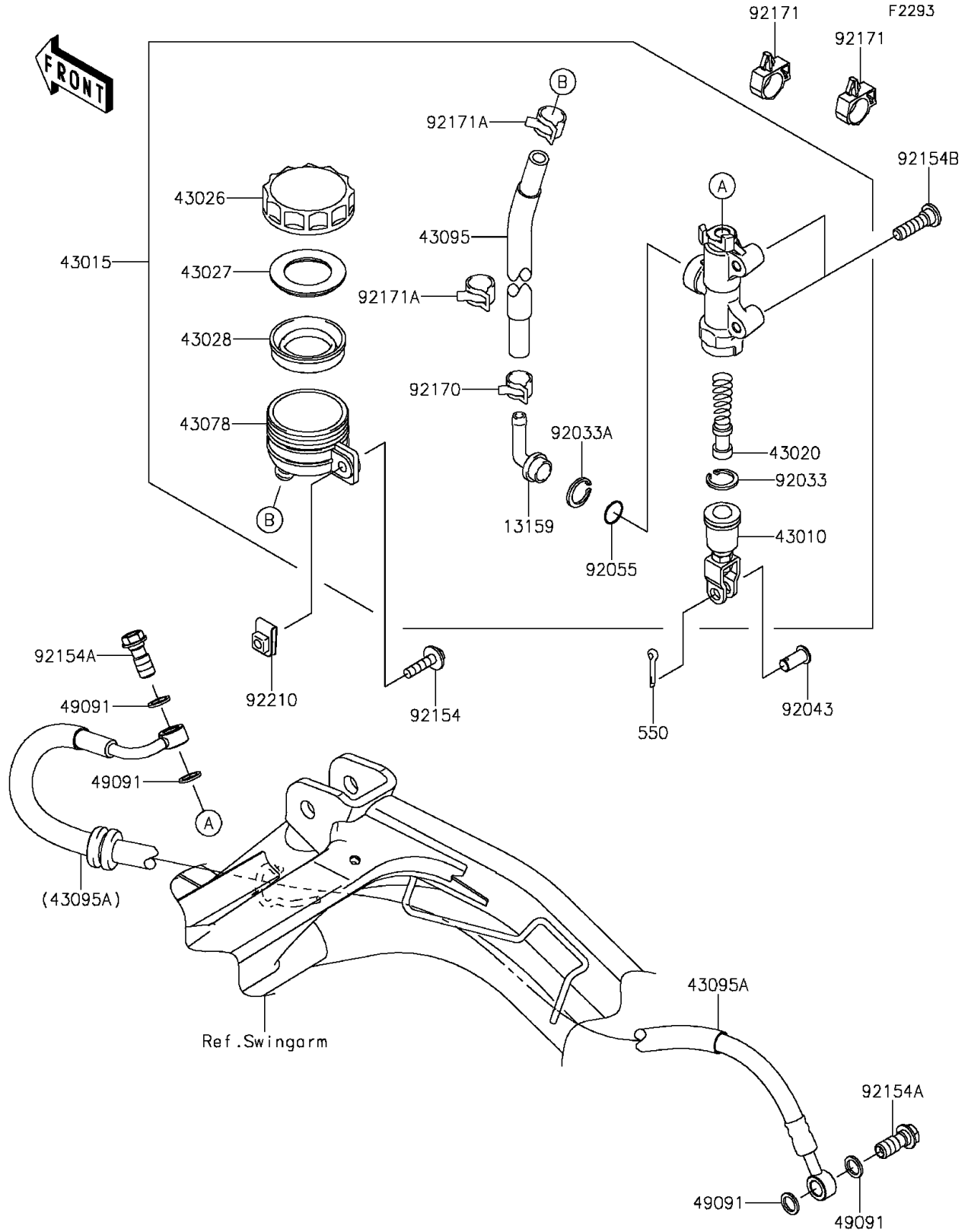


2016 ER-6n PARTS DIAGRAM

Rear Master Cylinder



2016 ER-6n PARTS LIST

Rear Master Cylinder

ITEM NAME	PART NUMBER	QUANTITY
PIN-COTTER,2.0X15 (Ref # 550)	550AA2015	1
CONNECTOR (Ref # 13159)	13159-1056	1
ROD-ASSY-BRAKE (Ref # 43010)	43010-1062	1
CYLINDER-ASSY-MASTER,RR (Ref # 43015)	43015-0559	1
PISTON-COMP-BRAKE (Ref # 43020)	43020-1094	1
CAP-BRAKE (Ref # 43026)	43026-1051	1
PLATE-DIAPHRAGM (Ref # 43027)	43027-1051	1
DIAPHRAGM,MASTER CYLINDER (Ref # 43028)	43028-1057	1
RESERVOIR,RR MASTER CYLINDER (Ref # 43078)	43078-1082	1
HOSE-BRAKE,RR M/CYLINDER (Ref # 43095)	43095-0628	1
HOSE-BRAKE,RR,L=748 (Ref # 43095A)	43095-0752	1
WASHER-SEAL,10.1X14.5X1.5 (Ref # 49091)	49091-0001	4
RING-SNAP,20.9X24.6X1.2 (Ref # 92033)	92033-0079	1
RING-SNAP,20.5MM (Ref # 92033A)	92033-1186	1
PIN (Ref # 92043)	92043-0182	1
RING-O,14.8X2.4 (Ref # 92055)	92055-0741	1
BOLT,6X25 (Ref # 92154)	92154-0467	1
BOLT,FLANGED,10X23 (Ref # 92154A)	92154-0732	2
BOLT,SOCKET,8X30 (Ref # 92154B)	92154-0843	2
CLAMP,HOSE (Ref # 92170)	92170-1091	1
CLAMP,BRAKE HOSE (Ref # 92171)	92171-0316	2
CLAMP,HOSE (Ref # 92171A)	92171-0463	2
NUT,6MM (Ref # 92210)	92210-0474	1