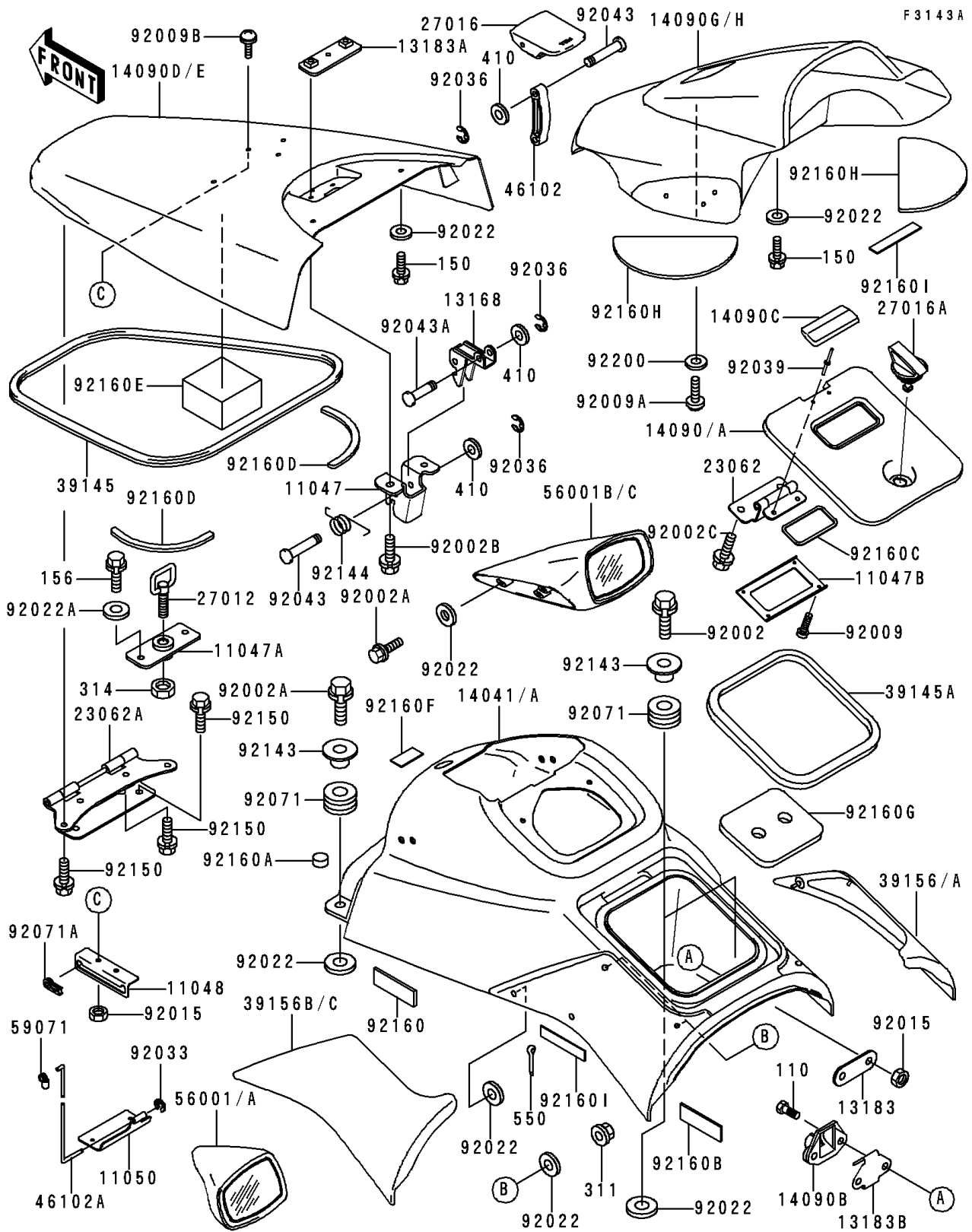


1998 900 STX PARTS DIAGRAM

Hull Fittings



1998 900 STX PARTS LIST

Hull Fittings

ITEM NAME	PART NUMBER	QUANTITY
BRACKET,SEAT SIDE LOCK (Ref # 11047)	11047-3732	1
BRACKET,HATCH COVER HINGE (Ref # 11047A)	11047-3788	1
BRACKET,METER HOLDER (Ref # 11047B)	11047-3789	1
BRACKET,HATCH COVER (Ref # 11048)	11048-3777	1
BRACKET,HINGE (Ref # 11050)	11050-3723	1
LEVER,HATCH LOCK (Ref # 13168)	13168-3720	1
PLATE (Ref # 13183)	13183-3754	1
PLATE,HATCH LOCK (Ref # 13183A)	13183-3792	1
PLATE,STORAGE LOCK (Ref # 13183B)	13183-3832	1
COVER-COMP,HANDLE,P.BOULOGNE (Ref # 14041A)	14041-3705-7X	1
COVER,STORAGE,P.BOULOGNE (Ref # 14090A)	14090-3723-7X	1
COVER,STORAGE LOCK (Ref # 14090B)	14090-3729	1
COVER,HINGE (Ref # 14090C)	14090-3793	1
COVER,HATCH,P.BOULOGNE (Ref # 14090E)	14090-3803-7X	1
COVER,HATCH COVER,P.BOULOGNE (Ref # 14090H)	14090-3805-VG	1
BRACKET-COMP,HINGE (Ref # 23062)	23062-3706	1
BRACKET-COMP,HATCH COVER HINGE (Ref # 23062A)	23062-3707	1
HOOK,HATCH COVER LOCK (Ref # 27012)	27012-3769	1
LOCK-ASSY,HATCH COVER CAP (Ref # 27016)	27016-3738	1
LOCK-ASSY,STORAGE COVER (Ref # 27016A)	27016-3739	1
TRIM-SEAL,FRONT HATCH (Ref # 39145)	39145-3736	1
TRIM-SEAL,L=784 (Ref # 39145A)	39145-3737	1
PAD,HANDLE COVER,RH,BOULOGNE (Ref # 39156A)	39156-3809-ML	1
PAD,HANDLE COVER,LH,BOULOGNE (Ref # 39156C)	39156-3810-ML	1
ROD,CONNECTION (Ref # 46102)	46102-3724	1
ROD,HATCH COVER HINGE (Ref # 46102A)	46102-3726	1
MIRROR-ASSY,LH,BOULOGNE (Ref # 56001A)	56001-3707-6Q	1
MIRROR-ASSY,RH,BOULOGNE (Ref # 56001C)	56001-3708-6Q	1
JOINT (Ref # 59071)	59071-3743	1

1998 900 STX PARTS LIST

Hull Fittings

ITEM NAME	PART NUMBER	QUANTITY
BOLT,6X16 (Ref # 110)	110R0616	2
BOLT-WS,6X14 (Ref # 150)	150R0614	4
BOLT-WP,6X20 (Ref # 156)	156R0620	2
NUT-HEX,5MM (Ref # 311)	311R0500	4
NUT-HEX-FINE,10MM (Ref # 314)	314R1000	1
WASHER-PLAIN-SMALL,6MM (Ref # 410)	410S0600	3
PIN-COTTER (Ref # 550)	550S2020	4
BOLT,6X35 (Ref # 92002)	92002-3715	2
BOLT,6X30 (Ref # 92002A)	92002-3726	8
BOLT,6X20 (Ref # 92002B)	92002-3755	2
BOLT,6X12 (Ref # 92002C)	92002-3763	2
SCREW,TAPPING,4X14 (Ref # 92009)	92009-3762	4
SCREW,5X16 (Ref # 92009A)	92009-3789	2
SCREW,6X18 (Ref # 92009B)	92009-3805	2
NUT,6MM (Ref # 92015)	92015-3767	4
WASHER,6.5X20X1.5 (Ref # 92022)	92022-3710	22
WASHER,6.2X20X2 (Ref # 92022A)	92022-3714	2
RING-SNAP,E-TYPE,4MM (Ref # 92033)	92033-3722	1
RING-SNAP (Ref # 92036)	92036-518	3
RIVET,4MM (Ref # 92039)	92039-3703	2
PIN,6X27.5 (Ref # 92043)	92043-3732	2
PIN,6X20 (Ref # 92043A)	92043-3738	1
GROMMET (Ref # 92071)	92071-3716	4
GROMMET (Ref # 92071A)	92071-3809	1
COLLAR (Ref # 92143)	92143-3750	4
SPRING (Ref # 92144)	92144-3731	1
BOLT,6X18 (Ref # 92150)	92150-3729	6
DAMPER (Ref # 92160)	92160-3720	2
DAMPER (Ref # 92160A)	92160-3775	2

1998 900 STX PARTS LIST

Hull Fittings

ITEM NAME	PART NUMBER	QUANTITY
DAMPER,HANDLE COVER (Ref # 92160B)	92160-3811	2
DAMPER,METER (Ref # 92160C)	92160-3816	1
DAMPER (Ref # 92160D)	92160-3817	2
DAMPER (Ref # 92160E)	92160-3824	1
DAMPER,HANDLE COVER (Ref # 92160F)	92160-3825	1
DAMPER (Ref # 92160G)	92160-3826	1
DAMPER (Ref # 92160H)	92160-3895	2
DAMPER (Ref # 92160I)	92160-3898	5
WASHER,5.9X16X1.5 (Ref # 92200)	92200-3714	2