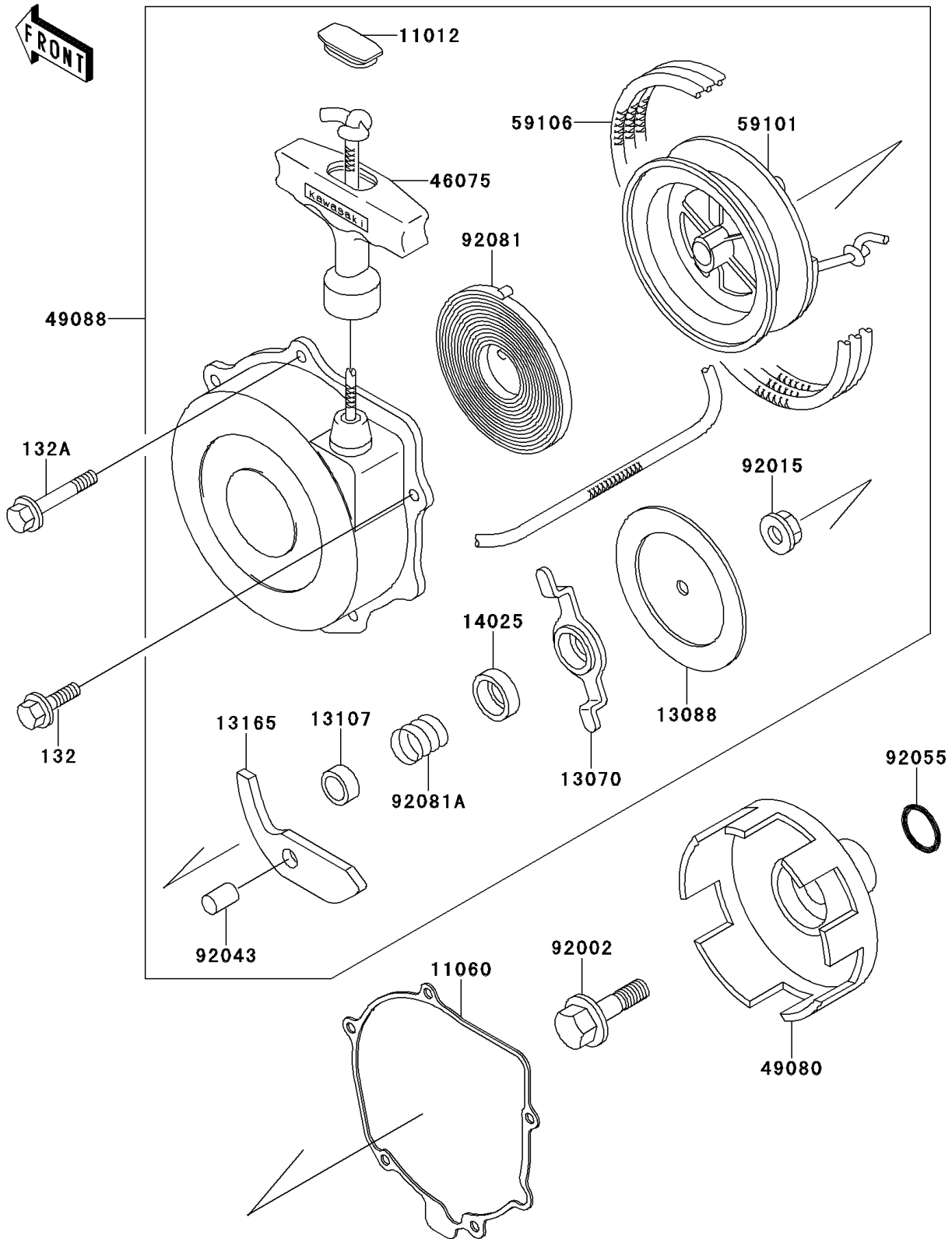


# 1994 Bayou 220 PARTS DIAGRAM

Recoil Starter

E3040



# 1994 Bayou 220 PARTS LIST

## Recoil Starter

| ITEM NAME                           | PART NUMBER | QUANTITY |
|-------------------------------------|-------------|----------|
| BOLT-FLANGED-SMALL (Ref # 132)      | 132J0614    | 4        |
| BOLT-FLANGED-SMALL (Ref # 132A)     | 132J0680    | 1        |
| CAP,RECOIL GRIP (Ref # 11012)       | 11012-1420  | 1        |
| GASKET,RECOIL STARTER (Ref # 11060) | 11060-1650  | 1        |
| GUIDE,RECOIL (Ref # 13070)          | 13070-1123  | 1        |
| PLATE-FRICTION,RECOIL (Ref # 13088) | 13088-1059  | 1        |
| SHAFT,RECOIL (Ref # 13107)          | 13107-1129  | 1        |
| PAWL,RECOIL (Ref # 13165)           | 13165-1110  | 1        |
| COVER,RECOIL (Ref # 14025)          | 14025-1966  | 1        |
| GRIP,RECOIL (Ref # 46075)           | 46075-1073  | 1        |
| PULLEY-STARTING (Ref # 49080)       | 49080-1051  | 1        |
| STARTER-RECOIL (Ref # 49088)        | 49088-1054  | 1        |
| REEL (Ref # 59101)                  | 59101-1105  | 1        |
| ROPE,RECOIL (Ref # 59106)           | 59106-1102  | 1        |
| BOLT,FLANGED,10X40 (Ref # 92002)    | 92002-1296  | 1        |
| NUT,6MM (Ref # 92015)               | 92015-1464  | 1        |
| PIN,RECOIL (Ref # 92043)            | 92043-1259  | 1        |
| RING-O,16.8MM (Ref # 92055)         | 92055-1235  | 1        |
| SPRING,RECOIL (Ref # 92081)         | 92081-1772  | 1        |
| SPRING (Ref # 92081A)               | 92081-1773  | 1        |