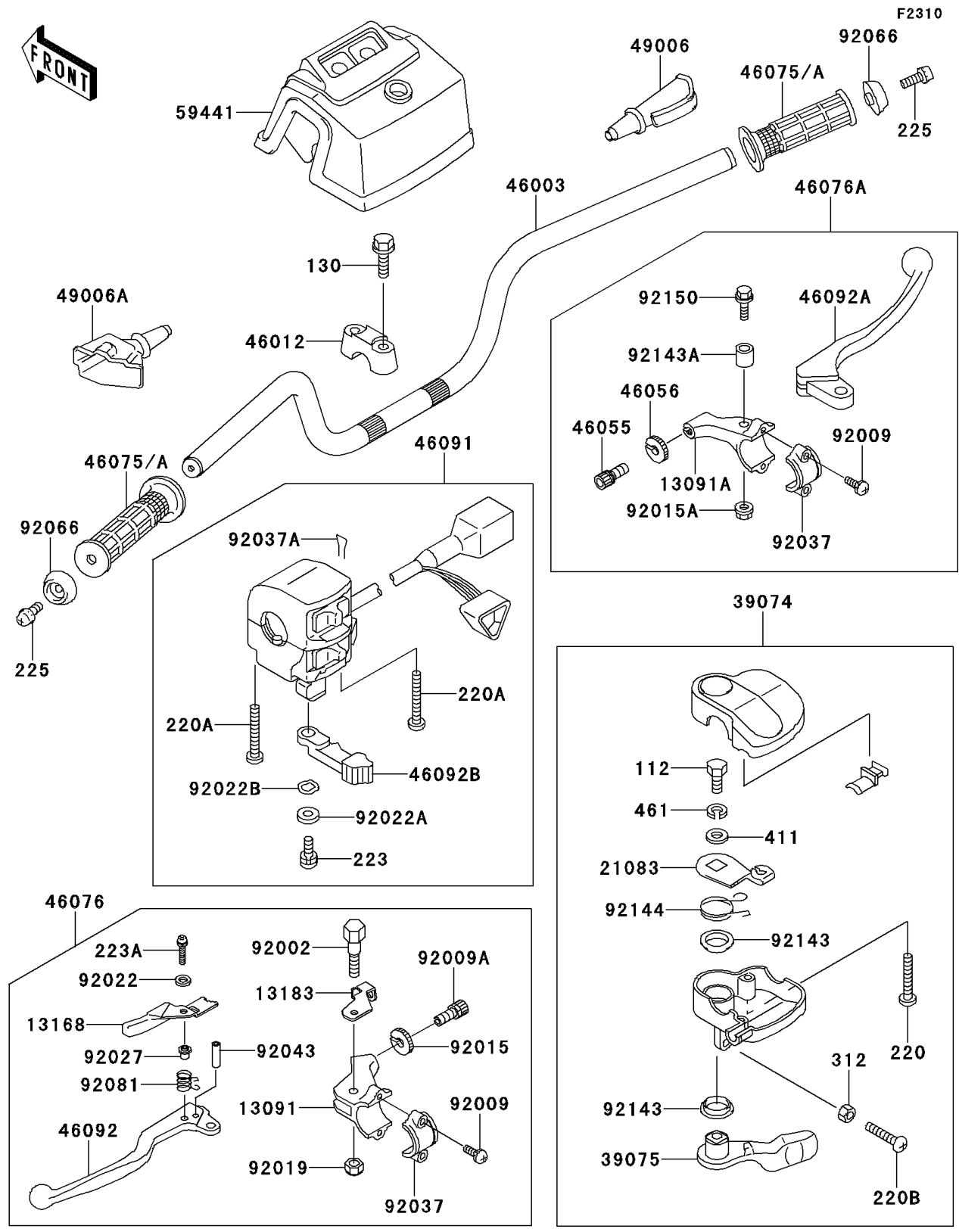


# 1997 Bayou 220 PARTS DIAGRAM

Handlebar(KLF220-A10-A12)



# 1997 Bayou 220 PARTS LIST

Handlebar(KLF220-A10-A12)

ITEM NAME	PART NUMBER	QUANTITY
HOLDER (Ref # 13091)	13091-1349	1
HOLDER,BRAKE LEVER,RH (Ref # 13091A)	13091-1541	1
LEVER,LOCK (Ref # 13168)	13168-1346	1
PLATE,LOCK (Ref # 13183)	13183-1076	1
ARM (Ref # 21083)	21083-1068	1
LEVER-ASSY-THROTTLE (Ref # 39074)	39074-1057	1
LEVER-THROTTLE (Ref # 39075)	39075-1060	1
HANDLE (Ref # 46003)	46003-1291	1
HOLDER-HANDLE (Ref # 46012)	46012-1168	2
SCREW,CABLE ADJUST,8MM (Ref # 46055)	46055-003	1
NUT,CABLE ADJUST LOCK,8MM (Ref # 46056)	46056-005	1
GRIP (Ref # 46075A)	46075-4003	2
LEVER-ASSY-GRIP,LH (Ref # 46076)	46076-1143	1
LEVER-ASSY-GRIP,RH (Ref # 46076A)	46076-1157	1
HOUSING-ASSY-CONTROL,LH (Ref # 46091)	46091-1624	1
LEVER-GRIP (Ref # 46092)	46092-1107	1
LEVER-GRIP,FRONT BRAKE (Ref # 46092A)	46092-1133	1
LEVER-GRIP,CHOKE (Ref # 46092B)	46092-1149	1
BOOT,LEVER HOLDER (Ref # 49006)	49006-1017	1
BOOT,CLUTCH LEVER (Ref # 49006A)	49006-1057	1
COVER-HANDLE,BLACK (Ref # 59441)	59441-1091-6D	1
BOLT,5MM (Ref # 92002)	92002-1447	1
SCREW,5X18 (Ref # 92009)	92009-1367	4
SCREW,CABLE ADJUST,8MM (Ref # 92009A)	92009-1435	1
NUT,CABLE ADJUST LOCK,8MM (Ref # 92015)	92015-1596	1
NUT,LOCK,5MM (Ref # 92015A)	92015-1719	1
NUT,LOCK,5MM (Ref # 92019)	92019-014	1
WASHER,4MM (Ref # 92022)	92022-1647	1
WASHER,5MM (Ref # 92022A)	92022-1837	1

# 1997 Bayou 220 PARTS LIST

Handlebar(KLF220-A10-A12)

ITEM NAME	PART NUMBER	QUANTITY
WASHER,WAVE,5MM (Ref # 92022B)	92022-1838	1
COLLAR,RETURN SPRING (Ref # 92027)	92027-1336	1
CLAMP,LEVER HOLDER (Ref # 92037)	92037-1621	2
CLAMP,CLIP (Ref # 92037A)	92037-1836	1
PIN,SPRING,3X16 (Ref # 92043)	92043-1268	1
PLUG,HANDLE (Ref # 92066)	92066-1191	2
SPRING,LOCK RETURN (Ref # 92081)	92081-1358	1
COLLAR (Ref # 92143)	92143-1138	2
COLLAR (Ref # 92143A)	92143-1216	1
SPRING (Ref # 92144)	92144-1176	1
BOLT-UPSET (Ref # 112)	112D0614	1
BOLT-FLANGED (Ref # 130)	130P0860	4
SCREW-PAN-CROS (Ref # 220)	220C0525	2
SCREW-PAN-CROS (Ref # 220A)	220C0535	2
SCREW-PAN-CROS,6X30,BLACK (Ref # 220B)	220C0630	1
SCREW-PAN-WS-CROS (Ref # 223)	223C0512	1
SCREW-PAN-WS-CROS (Ref # 223A)	223D0420	1
SCREW-PAN-WSP-CROS,6X20 (Ref # 225)	225C0620	2
NUT-HEX,6MM,BLACK (Ref # 312)	312C0600	1
WASHER-PLAIN,6MM (Ref # 411)	411E0600	1
WASHER-SPRING (Ref # 461)	461L0600	1
BOLT,LEVER SET (Ref # 92150)	92150-1102	1