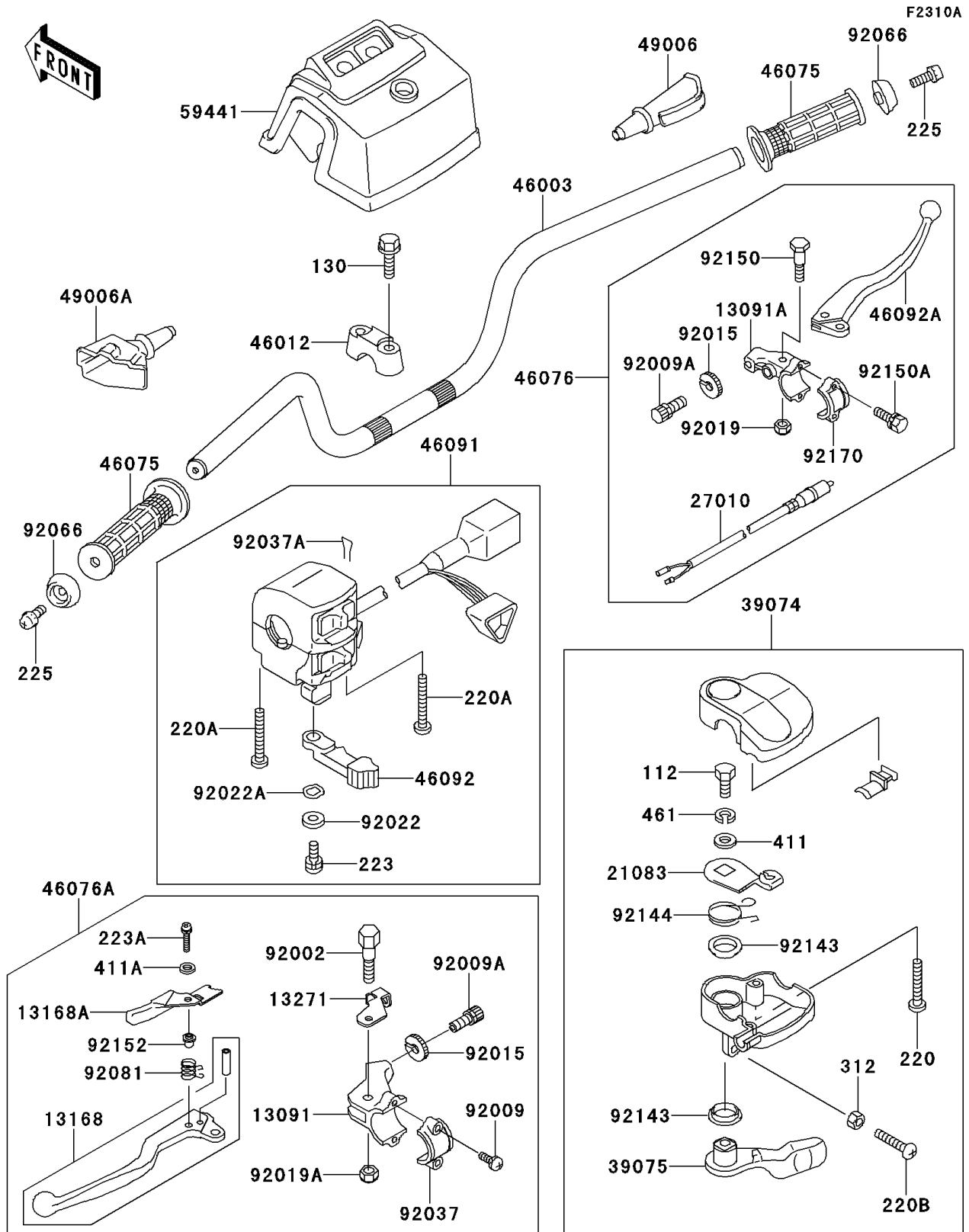


2000 Bayou 220 PARTS DIAGRAM

Handlebar(KLF220-A13-A14)



2000 Bayou 220 PARTS LIST

Handlebar(KLF220-A13-A14)

ITEM NAME	PART NUMBER	QUANTITY
BOLT-UPSET (Ref # 112)	112D0614	1
BOLT-FLANGED (Ref # 130)	130P0860	4
HOLDER (Ref # 13091)	13091-1349	1
HOLDER,LEVER,RH (Ref # 13091A)	13091-1719	1
LEVER,LH (Ref # 13168)	13168-1674	1
LEVER,LOCK (Ref # 13168A)	13168-1675	1
PLATE,LOCK (Ref # 13271)	13271-1260	1
ARM (Ref # 21083)	21083-1068	1
SWITCH,STOP (Ref # 27010)	27010-1296	1
LEVER-ASSY-THROTTLE (Ref # 39074)	39074-1057	1
LEVER-THROTTLE (Ref # 39075)	39075-1060	1
HANDLE (Ref # 46003)	46003-1291	1
HOLDER-HANDLE (Ref # 46012)	46012-1168	2
GRIP (Ref # 46075)	46075-1056	2
LEVER-ASSY-GRIP,RH (Ref # 46076)	46076-1179	1
LEVER-ASSY-GRIP,LH (Ref # 46076A)	46076-1225	1
HOUSING-ASSY-CONTROL,LH (Ref # 46091)	46091-1624	1
LEVER-GRIP,CHOKE (Ref # 46092)	46092-1149	1
LEVER-GRIP,RH (Ref # 46092A)	46092-1168	1
BOOT,LEVER HOLDER (Ref # 49006)	49006-1017	1
BOOT,CLUTCH LEVER (Ref # 49006A)	49006-1057	1
COVER-HANDLE,BLACK (Ref # 59441)	59441-1091-6D	1
BOLT,5MM (Ref # 92002)	92002-1447	1
SCREW,5X18 (Ref # 92009)	92009-1367	2
SCREW,CABLE ADJUST,8MM (Ref # 92009A)	92009-1435	2
NUT,CABLE ADJUST LOCK,8MM (Ref # 92015)	92015-1596	2
NUT,LOCK,6MM (Ref # 92019)	92019-008	1
NUT,LOCK,5MM (Ref # 92019A)	92019-014	1
WASHER,5MM (Ref # 92022)	92022-1837	1

2000 Bayou 220 PARTS LIST

Handlebar(KLF220-A13-A14)

ITEM NAME	PART NUMBER	QUANTITY
WASHER,WAVE,5MM (Ref # 92022A)	92022-1838	1
CLAMP,LEVER HOLDER (Ref # 92037)	92037-1621	1
CLAMP,CLIP (Ref # 92037A)	92037-1836	1
PLUG,HANDLE (Ref # 92066)	92066-1191	2
SPRING,LOCK RETURN (Ref # 92081)	92081-1358	1
COLLAR (Ref # 92143)	92143-1138	2
SPRING (Ref # 92144)	92144-1176	1
BOLT (Ref # 92150)	92150-1457	1
BOLT (Ref # 92150A)	92150-1458	2
COLLAR (Ref # 92152)	92152-1176	1
CLAMP,LEVER HOLDER (Ref # 92170)	92170-1219	1
SCREW-PAN-CROS (Ref # 220)	220C0525	2
SCREW-PAN-CROS (Ref # 220A)	220C0535	2
SCREW-PAN-CROS,6X30,BLACK (Ref # 220B)	220C0630	1
SCREW-PAN-WS-CROS (Ref # 223)	223C0512	1
SCREW-PAN-WS-CROS (Ref # 223A)	223C0520	1
SCREW-PAN-WSP-CROS,6X20 (Ref # 225)	225C0620	2
NUT-HEX,6MM,BLACK (Ref # 312)	312C0600	1
WASHER-PLAIN,6MM (Ref # 411)	411E0600	1
WASHER-PLAIN,5MM,BLACK (Ref # 411A)	411F0500	1
WASHER-SPRING (Ref # 461)	461L0600	1