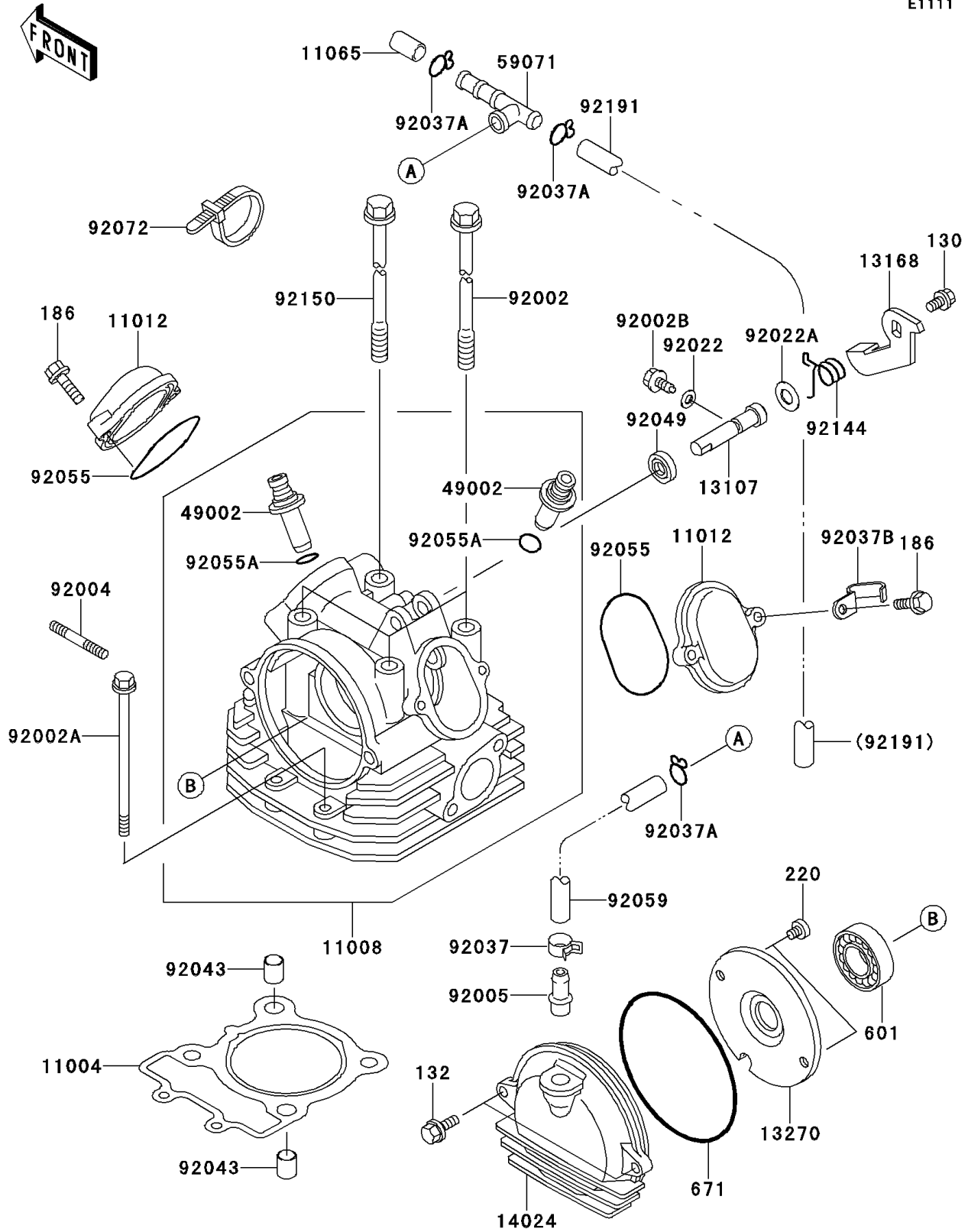


# 2008 Bayou® 250 PARTS DIAGRAM

Cylinder Head

E1111



## 2008 Bayou® 250 PARTS LIST

### Cylinder Head

ITEM NAME	PART NUMBER	QUANTITY
BOLT-FLANGED,6X10 (Ref # 130)	130BD0610	1
BOLT-FLANGED-SMALL,6X16 (Ref # 132)	132BD0616	2
BOLT-UPSET-WP,6X25 (Ref # 186)	186BA0625	4
SCREW-PAN-CROS,6X8 (Ref # 220)	220AA0608	2
BEARING-BALL (Ref # 601)	601A6004ZZ	1
O RING,95MM (Ref # 671)	671B2595	1
GASKET-HEAD (Ref # 11004)	11004-1375	1
HEAD-COMP-CYLINDER (Ref # 11008)	11008-1197	1
CAP,ROCKER ARM (Ref # 11012)	11012-1486	2
CAP (Ref # 11065)	11065-1075	1
SHAFT,DECOMPRESSOR (Ref # 13107)	13107-1209	1
LEVER,DECOMPRESSOR (Ref # 13168)	13168-1353	1
PLATE (Ref # 13270)	13270-1960	1
COVER,CAMSHAFT (Ref # 14024)	14024-1485	1
GUIDE-VALVE (Ref # 49002)	49002-1079	AR
JOINT (Ref # 59071)	59071-1124	1
BOLT,10X228 (Ref # 92002)	92002-1960	3
BOLT,6X113 (Ref # 92002A)	92002-1961	2
BOLT,FLANGED-SMALL,6X8.1X2.5 (Ref # 92002B)	92002-1962	1
STUD,6X30 (Ref # 92004)	92004-1128	2
FITTING,BREATHER PIPE (Ref # 92005)	92005-1161	1
WASHER,6.1X12X1 (Ref # 92022)	92022-077	1
WASHER,10.2X20X0.5 (Ref # 92022A)	92022-1649	1
CLAMP,HOSE CLIP (Ref # 92037)	92037-1181	1
CLAMP,FUEL TUBE (Ref # 92037A)	92037-1271	3
CLAMP (Ref # 92037B)	92037-1939	1
PIN,10.1X12X14 (Ref # 92043)	92043-4009	2
SEAL-OIL,10X20X5 (Ref # 92049)	92049-1542	1
RING-O,53.5X2.6 (Ref # 92055)	92055-112	2

## 2008 Bayou® 250 PARTS LIST

### Cylinder Head

ITEM NAME	PART NUMBER	QUANTITY
RING-O,10.3X1.2 (Ref # 92055A)	92055-1177	2
TUBE,9X12X148 (Ref # 92059)	92059-1848	1
BAND,L=149 (Ref # 92072)	92072-031	1
SPRING,DECOMPRESSOR (Ref # 92144)	92144-1154	1
BOLT,FLANGED,10X228 (Ref # 92150)	92150-1107	1
TUBE,9X12X380 (Ref # 92191)	92191-1169	1