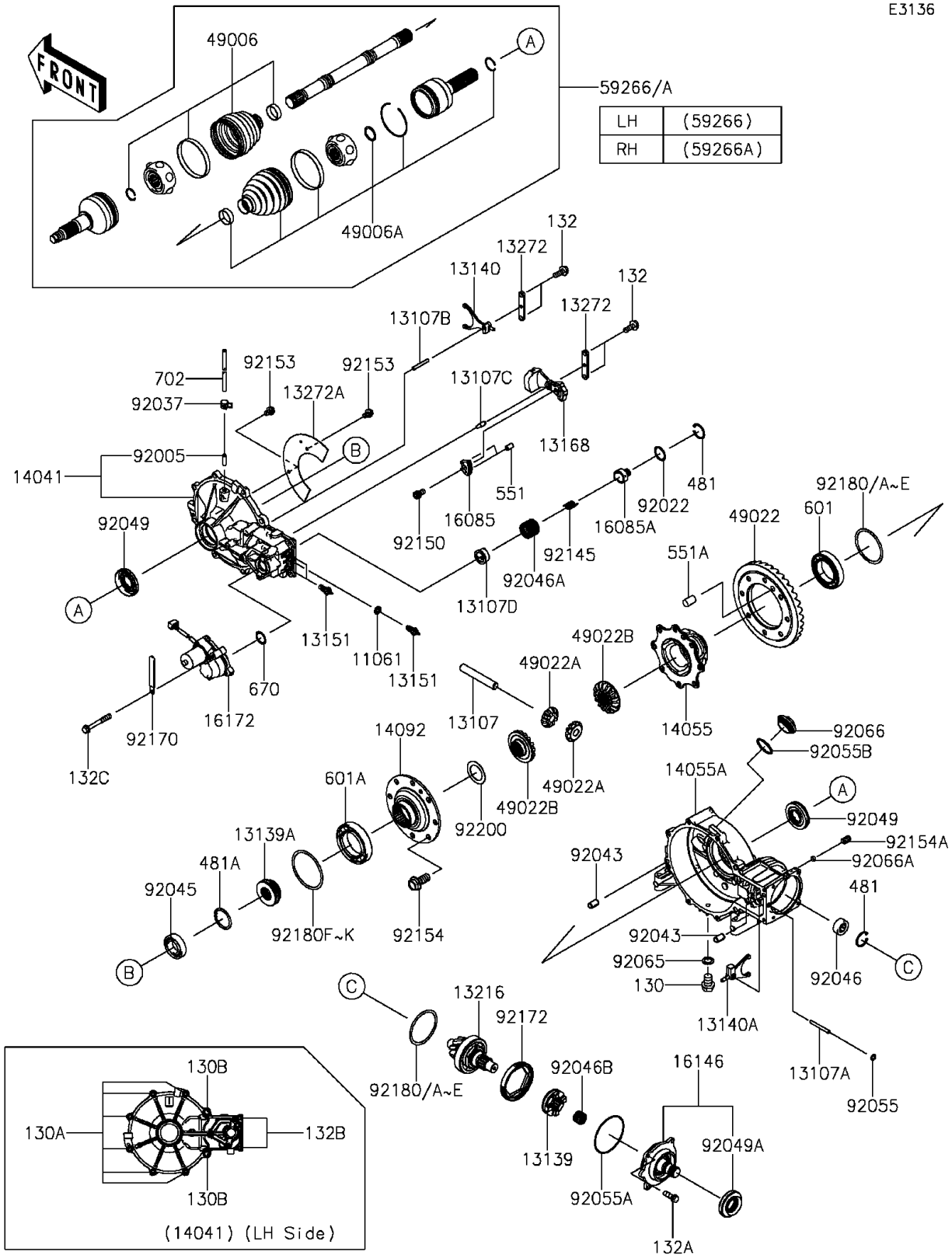


2014 TERYX® PARTS DIAGRAM

Drive Shaft-Front

E3136



2014 TERYX® PARTS LIST

Drive Shaft-Front

ITEM NAME	PART NUMBER	QUANTITY
GASKET,10.5X16X3 (Ref # 11061)	11061-0805	1
SHAFT,CROSS (Ref # 13107)	13107-0758	1
SHAFT,6X55 (Ref # 13107A)	13107-0759	1
SHAFT,DIFF LOCK (Ref # 13107B)	13107-0768	1
SHAFT (Ref # 13107C)	13107-0775	1
SHAFT,ACTUATOR OUTPUT (Ref # 13107D)	13107-0776	1
SHIFTER (Ref # 13139)	13139-0017	1
SHIFTER,DIFF LOCK (Ref # 13139A)	13139-0018	1
FORK-SHIFT (Ref # 13140)	13140-0070	1
FORK-SHIFT (Ref # 13140A)	13140-0635	1
SWITCH-COMP (Ref # 13151)	13151-1086	3
LEVER (Ref # 13168)	13168-0731	1
GEAR-COMP,BEVEL,8T (Ref # 13216)	13216-0875	1
PLATE (Ref # 13272)	13272-0985	2
PLATE (Ref # 13272A)	13272-0986	1
COVER-COMP,LH (Ref # 14041)	14041-0554	1
CASE-GEAR,CROSS SHAFT (Ref # 14055)	14055-0602	1
CASE-GEAR,RH (Ref # 14055A)	14055-0603	1
COVER,CROSS SHAFT CASE (Ref # 14092)	14092-1042	1
GEAR,65T (Ref # 16085)	16085-0605	1
GEAR,13T (Ref # 16085A)	16085-0614	1
COVER-ASSY,INPUT SHAFT (Ref # 16146)	16146-0729	1
ACTUATOR (Ref # 16172)	16172-0025	1
BOOT,OUTSIDE (Ref # 49006)	49006-0563	2
BOOT,INSIDE (Ref # 49006A)	49006-0578	2
GEAR-BEVEL,35T (Ref # 49022)	49022-0067	1
GEAR-BEVEL,10T (Ref # 49022A)	49022-0579	2
GEAR-BEVEL,16T (Ref # 49022B)	49022-0580	2
JOINT-BALL,LH (Ref # 59266)	59266-0047	1

2014 TERYX® PARTS LIST

Drive Shaft-Front

ITEM NAME	PART NUMBER	QUANTITY
JOINT-BALL,RH (Ref # 59266A)	59266-0048	1
FITTING (Ref # 92005)	92005-1142	1
WASHER,25.3X32X0.5 (Ref # 92022)	92022-225	1
CLAMP,TUBE (Ref # 92037)	92037-1461	1
PIN,6.2X8X14 (Ref # 92043)	92043-1263	2
BEARING-BALL,60/28 (Ref # 92045)	92045-1176	1
BEARING-NEEDLE,AJ501907 (Ref # 92046)	92046-0025	1
BEARING-NEEDLE (Ref # 92046A)	92046-0050	1
BEARING-NEEDLE (Ref # 92046B)	92046-1234	1
SEAL-OIL,28X60X7 (Ref # 92049)	92049-0089	2
SEAL-OIL (Ref # 92049A)	92049-0160	1
BOLT-FLANGED,10X14 (Ref # 130)	130BA1014	1
BOLT-FLANGED,8X25 (Ref # 130A)	130CA0825	6
BOLT-FLANGED,10X30 (Ref # 130B)	130CA1030	2
BOLT-FLANGED-SMALL,6X16 (Ref # 132)	132BA0616	4
BOLT-FLANGED-SMALL,6X18 (Ref # 132A)	132BA0618	4
BOLT-FLANGED-SMALL,6X25 (Ref # 132B)	132BA0625	2
BOLT-FLANGED-SMALL,6X45 (Ref # 132C)	132BA0645	3
CIRCLIP-TYPE-C,32MM (Ref # 481)	481J3200	2
CIRCLIP-TYPE-C,52MM (Ref # 481A)	481J5200	1
PIN-DOWEL,4X10 (Ref # 551)	551A0410	2
PIN-DOWEL,10X16 (Ref # 551A)	551A1016	1
BEARING-BALL (Ref # 601)	601B6010	1
BEARING-BALL (Ref # 601A)	601B6011	1
O RING (Ref # 670)	670D3022	1
RING-O,7.5X1.5 (Ref # 92055)	92055-0756	1
RING-O (Ref # 92055A)	92055-081	1
RING-O,35.8MM (Ref # 92055B)	92055-1281	1
GASKET,10.5X16X1 (Ref # 92065)	92065-058	1

2014 TERYX® PARTS LIST

Drive Shaft-Front

ITEM NAME	PART NUMBER	QUANTITY
PLUG,36X7.5 (Ref # 92066)	92066-0744	1
PLUG,6.2X3 (Ref # 92066A)	92066-1272	1
SPRING (Ref # 92145)	92145-0975	1
BOLT,SOCKET,6X10 (Ref # 92150)	92150-1650	1
BOLT,FLANGED-SMALL,6X8 (Ref # 92153)	92153-0964	2
BOLT,FLANGED,10X23 (Ref # 92154)	92154-0550	8
BOLT,SET,SOCKET,8X14 (Ref # 92154A)	92154-1070	1
CLAMP (Ref # 92170)	92170-1925	1
SCREW,SET,85X12.5 (Ref # 92172)	92172-0810	1
SHIM,70X80X0.15 (Ref # 92180)	92180-0301	AR
SHIM,70X80X0.2 (Ref # 92180A)	92180-0302	AR
SHIM,70X80X0.5 (Ref # 92180B)	92180-0303	AR
SHIM,70X80X0.8 (Ref # 92180C)	92180-0304	AR
SHIM,70X80X1.0 (Ref # 92180D)	92180-0305	AR
SHIM,70X80X1.2 (Ref # 92180E)	92180-0306	AR
SHIM,80X90X0.15 (Ref # 92180F)	92180-0307	AR
SHIM,80X90X0.2 (Ref # 92180G)	92180-0308	AR
SHIM,80X90X0.5 (Ref # 92180H)	92180-0309	AR
SHIM,80X90X0.8 (Ref # 92180I)	92180-0310	AR
SHIM,80X90X1.0 (Ref # 92180J)	92180-0311	AR
SHIM,80X90X1.2 (Ref # 92180K)	92180-0312	AR
WASHER (Ref # 92200)	92200-1077	1
TUBE-RUBBER,5X8X930 (Ref # 702)	702A05930	1