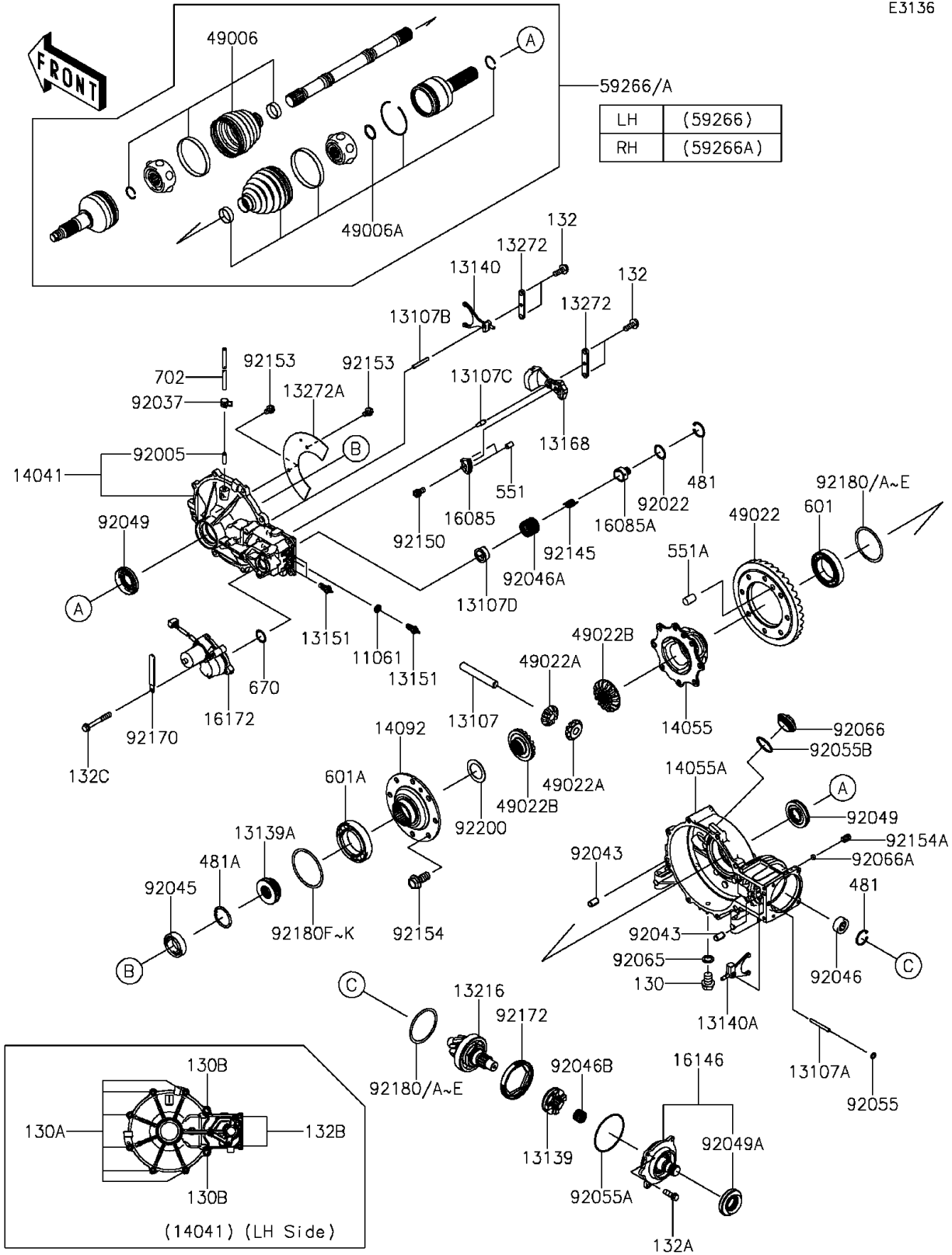


# 2015 TERYX® CAMO PARTS DIAGRAM

## Drive Shaft-Front

E3136



## 2015 TERYX® CAMO PARTS LIST

### Drive Shaft-Front

| ITEM NAME                            | PART NUMBER | QUANTITY |
|--------------------------------------|-------------|----------|
| GASKET,10.5X16X3 (Ref # 11061)       | 11061-0805  | 1        |
| SHAFT,CROSS (Ref # 13107)            | 13107-0758  | 1        |
| SHAFT,6X55 (Ref # 13107A)            | 13107-0759  | 1        |
| SHAFT,DIFF LOCK (Ref # 13107B)       | 13107-0768  | 1        |
| SHAFT (Ref # 13107C)                 | 13107-0775  | 1        |
| SHAFT,ACTUATOR OUTPUT (Ref # 13107D) | 13107-0776  | 1        |
| SHIFTER (Ref # 13139)                | 13139-0017  | 1        |
| SHIFTER,DIFF LOCK (Ref # 13139A)     | 13139-0018  | 1        |
| FORK-SHIFT (Ref # 13140)             | 13140-0070  | 1        |
| FORK-SHIFT (Ref # 13140A)            | 13140-0635  | 1        |
| SWITCH-COMP (Ref # 13151)            | 13151-1086  | 3        |
| LEVER (Ref # 13168)                  | 13168-0731  | 1        |
| GEAR-COMP,BEVEL,8T (Ref # 13216)     | 13216-0884  | 1        |
| PLATE (Ref # 13272)                  | 13272-0985  | 2        |
| PLATE (Ref # 13272A)                 | 13272-0986  | 1        |
| COVER-COMP,LH (Ref # 14041)          | 14041-0575  | 1        |
| CASE-GEAR,CROSS SHAFT (Ref # 14055)  | 14055-0602  | 1        |
| CASE-GEAR,RH (Ref # 14055A)          | 14055-0603  | 1        |
| COVER,CROSS SHAFT CASE (Ref # 14092) | 14092-1042  | 1        |
| GEAR,65T (Ref # 16085)               | 16085-0605  | 1        |
| GEAR,13T (Ref # 16085A)              | 16085-0614  | 1        |
| COVER-ASSY,INPUT SHAFT (Ref # 16146) | 16146-0740  | 1        |
| ACTUATOR (Ref # 16172)               | 16172-0036  | 1        |
| BOOT,OUTSIDE (Ref # 49006)           | 49006-0563  | 2        |
| BOOT,INSIDE (Ref # 49006A)           | 49006-0578  | 2        |
| GEAR-BEVEL,35T (Ref # 49022)         | 49022-0067  | 1        |
| GEAR-BEVEL,10T (Ref # 49022A)        | 49022-0579  | 2        |
| GEAR-BEVEL,16T (Ref # 49022B)        | 49022-0580  | 2        |
| JOINT-BALL,LH (Ref # 59266)          | 59266-0047  | 1        |

## 2015 TERYX® CAMO PARTS LIST

### Drive Shaft-Front

| ITEM NAME                             | PART NUMBER | QUANTITY |
|---------------------------------------|-------------|----------|
| JOINT-BALL,RH (Ref # 59266A)          | 59266-0048  | 1        |
| FITTING (Ref # 92005)                 | 92005-1142  | 1        |
| WASHER,25.3X32X0.5 (Ref # 92022)      | 92022-225   | 1        |
| CLAMP,TUBE (Ref # 92037)              | 92037-1461  | 1        |
| PIN,6.2X8X14 (Ref # 92043)            | 92043-1263  | 2        |
| BEARING-BALL,60/28 (Ref # 92045)      | 92045-1176  | 1        |
| BEARING-NEEDLE,AJ501907 (Ref # 92046) | 92046-0025  | 1        |
| BEARING-NEEDLE (Ref # 92046A)         | 92046-0050  | 1        |
| BEARING-NEEDLE (Ref # 92046B)         | 92046-1234  | 1        |
| SEAL-OIL,28X60X7 (Ref # 92049)        | 92049-0089  | 2        |
| SEAL-OIL (Ref # 92049A)               | 92049-0160  | 1        |
| BOLT-FLANGED,10X14 (Ref # 130)        | 130BA1014   | 1        |
| BOLT-FLANGED,8X25 (Ref # 130A)        | 130CA0825   | 6        |
| BOLT-FLANGED,10X30 (Ref # 130B)       | 130CA1030   | 2        |
| BOLT-FLANGED-SMALL,6X16 (Ref # 132)   | 132BA0616   | 4        |
| BOLT-FLANGED-SMALL,6X18 (Ref # 132A)  | 132BA0618   | 4        |
| BOLT-FLANGED-SMALL,6X25 (Ref # 132B)  | 132BA0625   | 2        |
| BOLT-FLANGED-SMALL,6X45 (Ref # 132C)  | 132BA0645   | 3        |
| CIRCLIP-TYPE-C,32MM (Ref # 481)       | 481J3200    | 2        |
| CIRCLIP (Ref # 481A)                  | 481J5200    | 1        |
| PIN-DOWEL (Ref # 551)                 | 551A0410    | 2        |
| PIN-DOWEL (Ref # 551A)                | 551A1016    | 1        |
| BEARING-BALL (Ref # 601)              | 601B6010    | 1        |
| BEARING-BALL (Ref # 601A)             | 601B6011    | 1        |
| O RING (Ref # 670)                    | 670D3022    | 1        |
| RING-O,7.5X1.5 (Ref # 92055)          | 92055-0756  | 1        |
| RING-O (Ref # 92055A)                 | 92055-081   | 1        |
| RING-O,35.8MM (Ref # 92055B)          | 92055-1281  | 1        |
| GASKET,10.5X16X1 (Ref # 92065)        | 92065-058   | 1        |

## 2015 TERYX® CAMO PARTS LIST

### Drive Shaft-Front

| ITEM NAME                            | PART NUMBER | QUANTITY |
|--------------------------------------|-------------|----------|
| PLUG,36X7.5 (Ref # 92066)            | 92066-0744  | 1        |
| PLUG,6.2X3 (Ref # 92066A)            | 92066-1272  | 1        |
| SPRING (Ref # 92145)                 | 92145-0975  | 1        |
| BOLT,SOCKET,6X10 (Ref # 92150)       | 92150-1650  | 1        |
| BOLT,FLANGED-SMALL,6X8 (Ref # 92153) | 92153-0964  | 2        |
| BOLT,FLANGED,10X23 (Ref # 92154)     | 92154-0550  | 8        |
| BOLT,SET,SOCKET,8X14 (Ref # 92154A)  | 92154-1070  | 1        |
| CLAMP (Ref # 92170)                  | 92170-1925  | 1        |
| SCREW,SET,85X12.5 (Ref # 92172)      | 92172-0810  | 1        |
| SHIM,70X80X0.15 (Ref # 92180)        | 92180-0301  | AR       |
| SHIM,70X80X0.2 (Ref # 92180A)        | 92180-0302  | AR       |
| SHIM,70X80X0.5 (Ref # 92180B)        | 92180-0303  | AR       |
| SHIM,70X80X0.8 (Ref # 92180C)        | 92180-0304  | AR       |
| SHIM,70X80X1.0 (Ref # 92180D)        | 92180-0305  | AR       |
| SHIM,70X80X1.2 (Ref # 92180E)        | 92180-0306  | AR       |
| SHIM,80X90X0.15 (Ref # 92180F)       | 92180-0307  | AR       |
| SHIM,80X90X0.2 (Ref # 92180G)        | 92180-0308  | AR       |
| SHIM,80X90X0.5 (Ref # 92180H)        | 92180-0309  | AR       |
| SHIM,80X90X0.8 (Ref # 92180I)        | 92180-0310  | AR       |
| SHIM,80X90X1.0 (Ref # 92180J)        | 92180-0311  | AR       |
| SHIM,80X90X1.2 (Ref # 92180K)        | 92180-0312  | AR       |
| WASHER (Ref # 92200)                 | 92200-1077  | 1        |
| TUBE-RUBBER,5X8X930 (Ref # 702)      | 702A05930   | 1        |