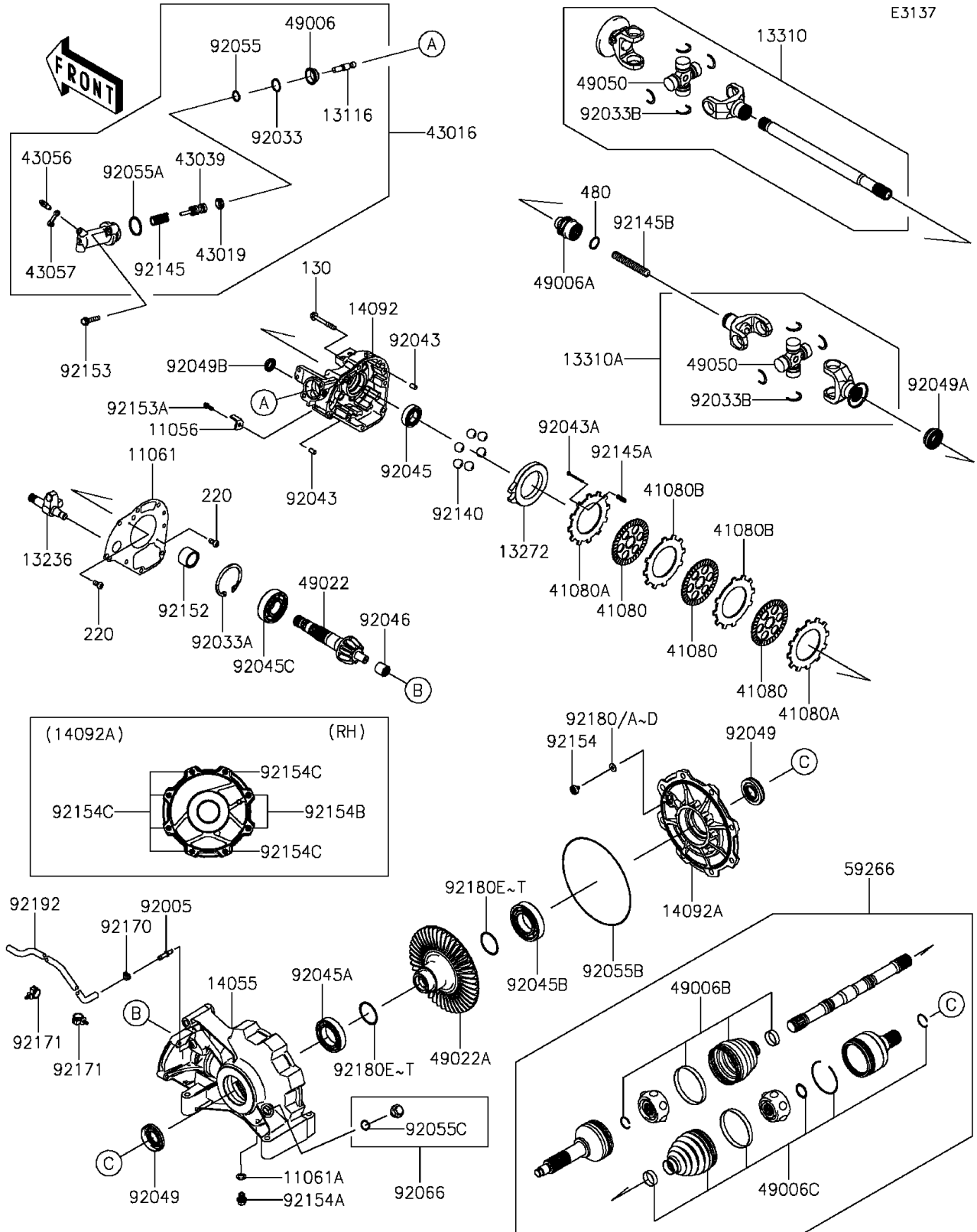


2015 TERYX4™ LE PARTS DIAGRAM

Drive Shaft-Rear



2015 TERYX4™ LE PARTS LIST

Drive Shaft-Rear

| ITEM NAME | PART NUMBER | QUANTITY |
|--|-------------|----------|
| BRACKET (Ref # 11056) | 11056-1447 | 1 |
| GASKET,FR COVER (Ref # 11061) | 11061-0270 | 1 |
| GASKET,DRAIN (Ref # 11061A) | 11061-0759 | 1 |
| ROD-PUSH (Ref # 13116) | 13116-0026 | 1 |
| LEVER-COMP,BRAKE (Ref # 13236) | 13236-0706 | 1 |
| PLATE,CAM (Ref # 13272) | 13272-1203 | 1 |
| SHAFT-ASSY,ENGINE SIDE (Ref # 13310) | 13310-0033 | 1 |
| SHAFT-ASSY,GEAR-ASSY SIDE (Ref # 13310A) | 13310-0034 | 1 |
| CASE-GEAR (Ref # 14055) | 14055-0599 | 1 |
| COVER,FR (Ref # 14092) | 14092-1049 | 1 |
| COVER (Ref # 14092A) | 14092-1063 | 1 |
| DISC,FRICITION (Ref # 41080) | 41080-1482 | 3 |
| DISC,PRESSURE (Ref # 41080A) | 41080-1483 | 2 |
| DISC,SEPARATER (Ref # 41080B) | 41080-1484 | 2 |
| CYLINDER-MASTER (Ref # 43016) | 43016-0556 | 1 |
| CUP-BRAKE (Ref # 43019) | 43019-0002 | 1 |
| PISTON-BRAKE (Ref # 43039) | 43039-0006 | 1 |
| BREATHER-BRAKE (Ref # 43056) | 43056-1056 | 1 |
| CAP-BREATHER (Ref # 43057) | 43057-1001 | 1 |
| BOOT (Ref # 49006) | 49006-0072 | 1 |
| BOOT,GEAR ASSY SIDE (Ref # 49006A) | 49006-0108 | 1 |
| BOOT,OUTSIDE (Ref # 49006B) | 49006-0556 | 2 |
| BOOT,INSIDE (Ref # 49006C) | 49006-0577 | 2 |
| GEAR-BEVEL,10T (Ref # 49022) | 49022-0568 | 1 |
| GEAR-BEVEL,44T (Ref # 49022A) | 49022-0581 | 1 |
| SPIDER (Ref # 49050) | 49050-0027 | 2 |
| JOINT-BALL,RR,CVJ (Ref # 59266) | 59266-0046 | 2 |
| FITTING,BREATHER (Ref # 92005) | 92005-0729 | 1 |
| RING-SNAP (Ref # 92033) | 92033-0055 | 1 |

2015 TERYX4™ LE PARTS LIST

Drive Shaft-Rear

| ITEM NAME | PART NUMBER | QUANTITY |
|--|-------------|----------|
| RING-SNAP (Ref # 92033A) | 92033-0713 | 1 |
| RING-SNAP (Ref # 92033B) | 92033-0735 | 8 |
| PIN,8X14 (Ref # 92043) | 92043-1567 | 2 |
| PIN,3X35 (Ref # 92043A) | 92043-1617 | 2 |
| BEARING-BALL,#6005 (Ref # 92045) | 92045-0077 | 1 |
| BEARING-BALL,TMB009 (Ref # 92045A) | 92045-0728 | 1 |
| BEARING-BALL,6209 (Ref # 92045B) | 92045-0744 | 1 |
| BEARING-BALL,6306 (Ref # 92045C) | 92045-0748 | 1 |
| BEARING-NEEDLE,16NQ2322A (Ref # 92046) | 92046-0606 | 1 |
| SEAL-OIL,33X60X11 (Ref # 92049) | 92049-0721 | 2 |
| SEAL-OIL,25X45X9.5 (Ref # 92049A) | 92049-0739 | 1 |
| SEAL-OIL,TC17X28X6 (Ref # 92049B) | 92049-1537 | 1 |
| RING-O (Ref # 92055) | 92055-0146 | 1 |
| RING-O (Ref # 92055A) | 92055-0147 | 1 |
| RING-O (Ref # 92055B) | 92055-0722 | 1 |
| RING-O,20X2.5 (Ref # 92055C) | 92055-0754 | 1 |
| PLUG (Ref # 92066) | 92066-0728 | 1 |
| BALL,D/O#12 (Ref # 92140) | 92140-1064 | 6 |
| SPRING (Ref # 92145) | 92145-0882 | 1 |
| SPRING,RR BRAKE (Ref # 92145A) | 92145-1301 | 2 |
| SPRING,PROPELLER SHAFT (Ref # 92145B) | 92145-1304 | 1 |
| COLLAR (Ref # 92152) | 92152-1525 | 1 |
| BOLT,FLANGED,8X40 (Ref # 92153) | 92153-1727 | 2 |
| BOLT,FLANGED-SMALL,6X16 (Ref # 92153A) | 92153-1729 | 1 |
| BOLT,BUTTON (Ref # 92154) | 92154-0831 | 1 |
| BOLT,DRAIN (Ref # 92154A) | 92154-0832 | 1 |
| BOLT,FLANGED,10X40 (Ref # 92154B) | 92154-0833 | 2 |
| BOLT,FLANGED,10X40 (Ref # 92154C) | 92154-0834 | 6 |
| CLAMP (Ref # 92170) | 92170-2043 | 1 |

2015 TERYX4™ LE PARTS LIST

Drive Shaft-Rear

| ITEM NAME | PART NUMBER | QUANTITY |
|---------------------------------|-------------|----------|
| CLAMP (Ref # 92171) | 92171-0453 | 2 |
| SHIM,T=1.3 (Ref # 92180) | 92180-0721 | AR |
| SHIM,T=1.4 (Ref # 92180A) | 92180-0722 | AR |
| SHIM,T=1.5 (Ref # 92180B) | 92180-0723 | 1 |
| SHIM,T=1.6 (Ref # 92180C) | 92180-0724 | AR |
| SHIM,T=1.7 (Ref # 92180D) | 92180-0725 | AR |
| SHIM,T=0.965 (Ref # 92180E) | 92180-0738 | AR |
| SHIM,T=0.991 (Ref # 92180F) | 92180-0739 | AR |
| SHIM,T=1.016 (Ref # 92180G) | 92180-0740 | AR |
| SHIM,T=1.041 (Ref # 92180H) | 92180-0741 | AR |
| SHIM,T=1.067 (Ref # 92180I) | 92180-0742 | AR |
| SHIM,T=1.092 (Ref # 92180J) | 92180-0743 | 2 |
| SHIM,T=1.118 (Ref # 92180K) | 92180-0744 | AR |
| SHIM,T=1.143 (Ref # 92180L) | 92180-0745 | AR |
| SHIM,T=1.168 (Ref # 92180M) | 92180-0746 | AR |
| SHIM,T=1.194 (Ref # 92180N) | 92180-0747 | AR |
| SHIM,T=1.219 (Ref # 92180O) | 92180-0748 | AR |
| SHIM,T=1.245 (Ref # 92180P) | 92180-0749 | AR |
| SHIM,T=1.270 (Ref # 92180Q) | 92180-0750 | AR |
| SHIM,T=1.295 (Ref # 92180R) | 92180-0751 | AR |
| SHIM,T=1.321 (Ref # 92180S) | 92180-0752 | AR |
| SHIM,T=1.346 (Ref # 92180T) | 92180-0753 | AR |
| BOLT-FLANGED,8X60 (Ref # 130) | 130CA0860 | 8 |
| SCREW-PAN-CROS,4X8 (Ref # 220) | 220AA0408 | 2 |
| CIRCLIP-TYPE-C,25MM (Ref # 480) | 480J2500 | 1 |
| TUBE,BREATHER (Ref # 92192) | 92192-1213 | 1 |