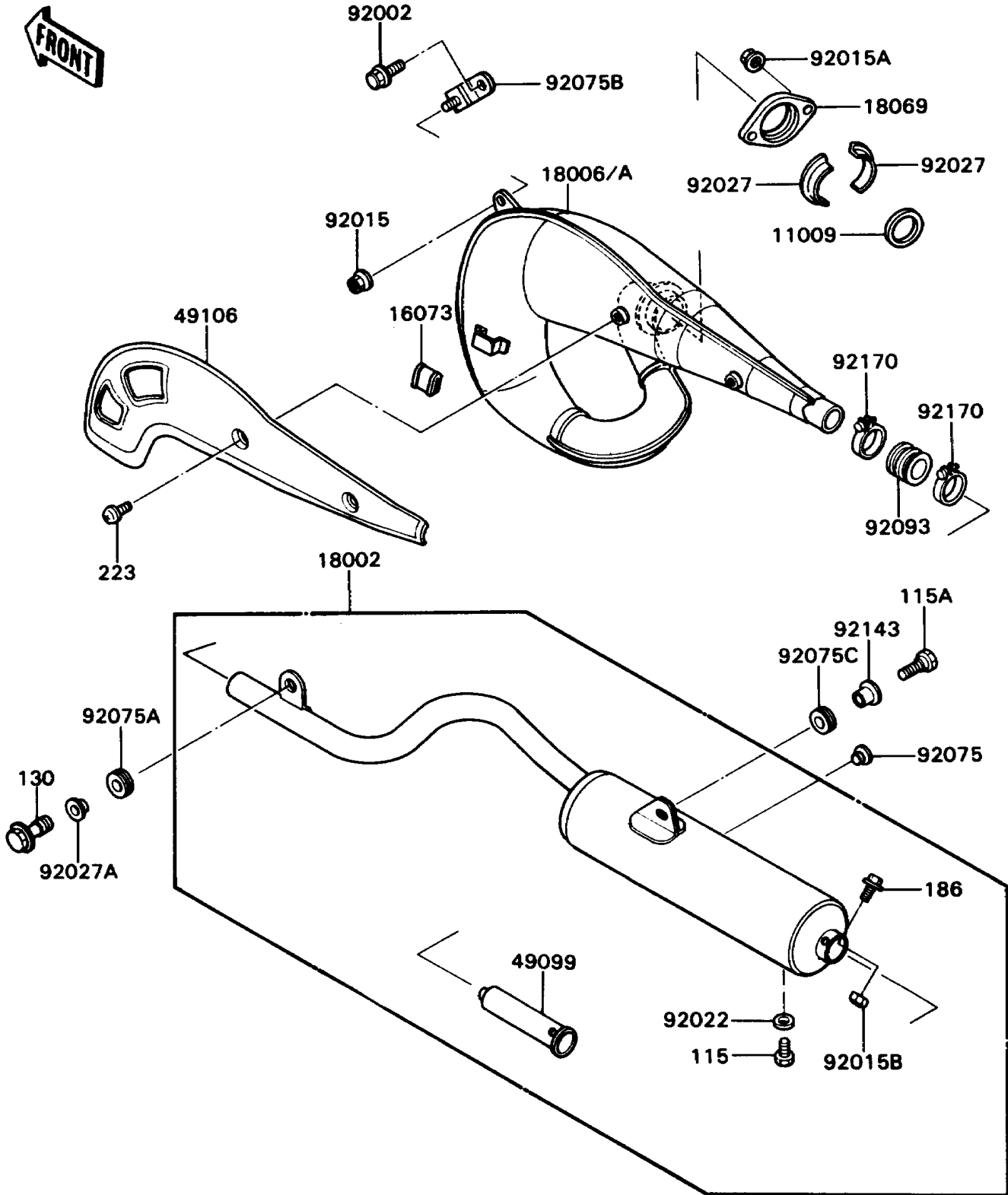


1989 KD80 PARTS DIAGRAM

Muffler(s)

E1140-0290



1989 KD80 PARTS LIST

Muffler(s)

ITEM NAME	PART NUMBER	QUANTITY
GASKET,EXHAUST HOLDER (Ref # 11009)	11009-1261	1
INSULATOR,HEAT (Ref # 16073)	18065-007	1
BODY-COMP-MUFFLER (Ref # 18002)	18002-1851	1
BODY-MUFFLER (Ref # 18006)	18006-1490	1
BODY-MUFFLER (Ref # 18006A)	18006-1514	1
HOLDER-EXHAUST PIPE (Ref # 18069)	18069-1020	1
BAFFLE-PIPE MUFFLER (Ref # 49099)	49099-1226	1
COVER-MUFFLER (Ref # 49106)	49106-1110	1
BOLT,6X16 (Ref # 92002)	92002-1242	1
NUT,FLANGED,6MM (Ref # 92015)	92015-1233	1
NUT,6MM (Ref # 92015A)	92015-1365	2
NUT,LOCK,6MM (Ref # 92015B)	92019-008	2
WASHER,8.2X14X1.0 (Ref # 92022)	92022-1488	1
COLLAR (Ref # 92027)	92027-1365	2
COLLAR,FLANGED,L=12.1,BLACK (Ref # 92027A)	92027-1651	1
DAMPER (Ref # 92075)	92075-005	2
DAMPER,RUBBER (Ref # 92075A)	92075-1123	1
DAMPER,MUFFLER (Ref # 92075B)	92075-1891	1
DAMPER (Ref # 92075C)	92075-1898	1
SEAL,MUFFLER CONNECTING (Ref # 92093)	92093-1020	1
COLLAR,MUFFLER FITTING (Ref # 92143)	92143-1069	1
CLAMP (Ref # 92170)	92170-1003	2
BOLT-SMALL-UPSET (Ref # 115)	115B0812	1
BOLT-SMALL-UPSET,8X20 (Ref # 115A)	115J0820	1
BOLT-FLANGED (Ref # 130)	130J0620	1
BOLT-UPSET-WP (Ref # 186)	186B0610	2
SCREW-PAN-WS-CROS (Ref # 223)	223C0610	2