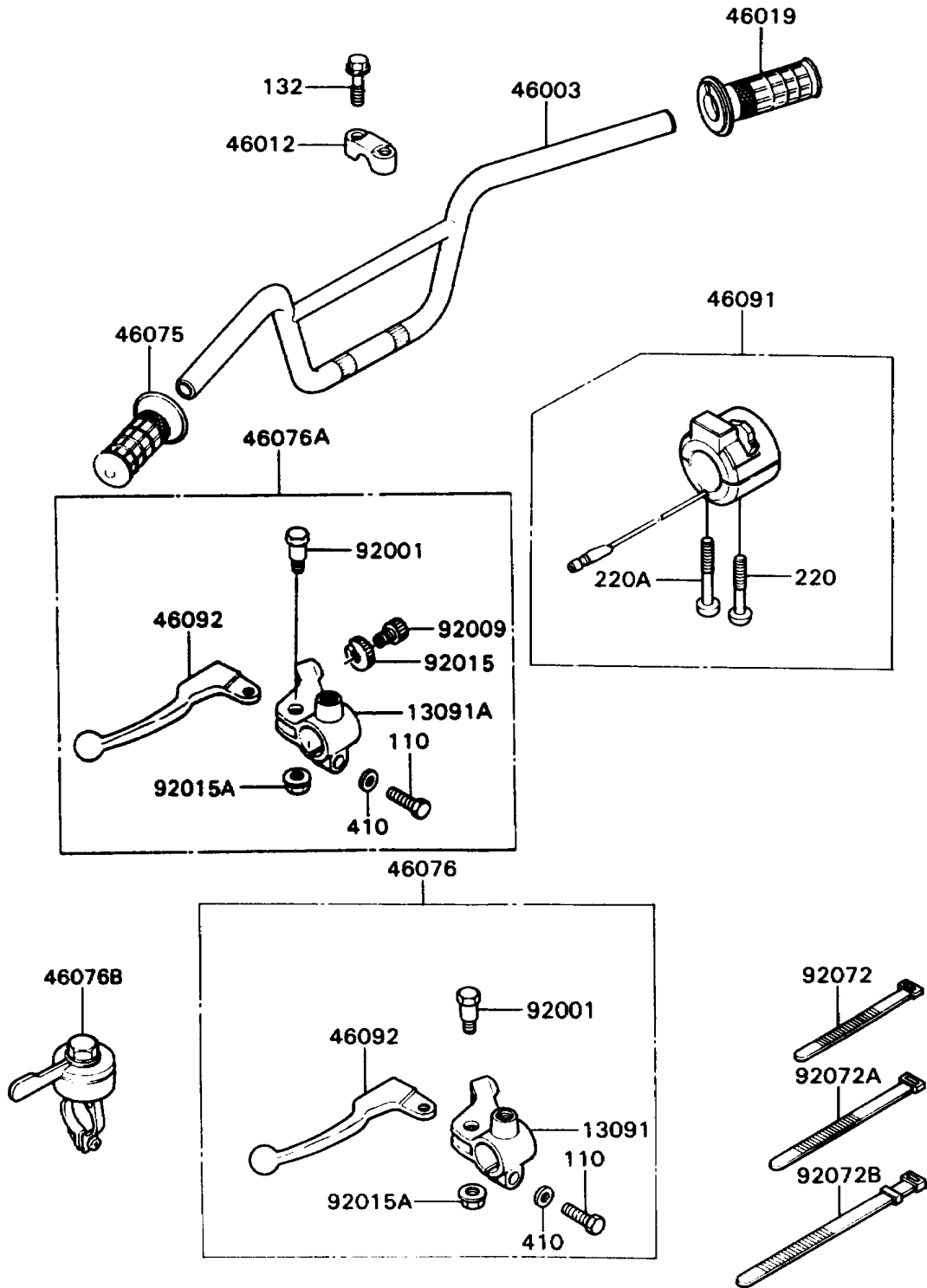


1988 KD80 PARTS DIAGRAM

Handlebar

F2310-0428



1988 KD80 PARTS LIST

Handlebar

| ITEM NAME | PART NUMBER | QUANTITY |
|--|-------------|----------|
| HOLDER,LEVER (Ref # 13091) | 13091-1534 | 1 |
| HANDLE (Ref # 46003) | 46003-1273 | 1 |
| HOLDER-HANDLE,UPP (Ref # 46012) | 46012-004 | 2 |
| GRIP-ASSY,THROTTLE (Ref # 46019) | 46019-1011 | 1 |
| GRIP,LH (Ref # 46075) | 46075-1004 | 1 |
| LEVER-ASSY-GRIP,LH (Ref # 46076) | 46076-1156 | 1 |
| LEVER-ASSY-GRIP,STARTER (Ref # 46076B) | 46109-013 | 1 |
| HOUSING-ASSY-CONTROL,RH (Ref # 46091) | 46091-1483 | 1 |
| LEVER-GRIP,CLUTCH (Ref # 46092) | 46092-1036 | 1 |
| BOLT,5X22 (Ref # 92001) | 92001-1704 | 1 |
| NUT,LOCK,5MM (Ref # 92015A) | 92015-1221 | 1 |
| BAND,L=123 (Ref # 92072) | 92072-030 | 1 |
| BAND,L=149 (Ref # 92072A) | 92072-031 | 2 |
| BAND,L=186 (Ref # 92072B) | 92072-056 | 2 |
| BOLT,6X25 (Ref # 110) | 110C0625 | 1 |
| BOLT-FLANGED-SMALL (Ref # 132) | 132E0835 | 4 |
| SCREW-PAN-CROS (Ref # 220) | 220B0535 | 1 |
| SCREW-PAN-CROS (Ref # 220A) | 220B0540 | 1 |
| WASHER-PLAIN-SMALL,6MM,BLACK (Ref # 410) | 410F0600 | 1 |