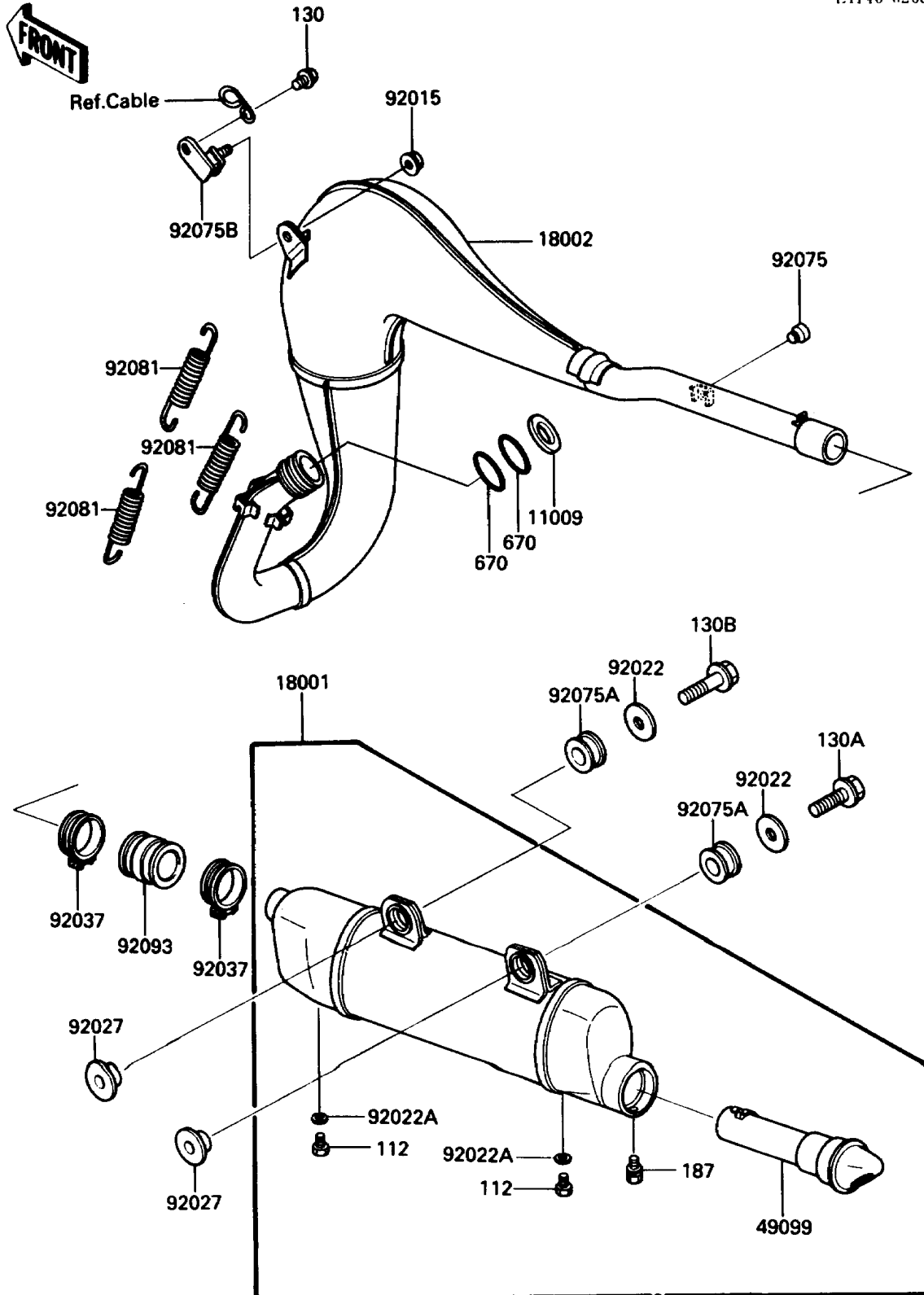


# 1988 KDX200 PARTS DIAGRAM

Muffler(s)

E1140-0268



# 1988 KDX200 PARTS LIST

## Muffler(s)

| ITEM NAME                         | PART NUMBER | QUANTITY |
|-----------------------------------|-------------|----------|
| GASKET,EXHAUST PIPE (Ref # 11009) | 11009-1123  | 1        |
| MUFFLER (Ref # 18001)             | 18001-1669  | 1        |
| BODY-COMP-MUFFLER (Ref # 18002)   | 18002-1785  | 1        |
| BAFFLE-PIPE MUFFLER (Ref # 49099) | 49099-1170  | 1        |
| NUT,FLANGED,6MM (Ref # 92015)     | 92015-1078  | 1        |
| WASHER,8.5X35X2.3 (Ref # 92022)   | 92022-298   | 2        |
| WASHER,6.2X11X1 (Ref # 92022A)    | 92022-304   | 2        |
| COLLAR,MUFFLER (Ref # 92027)      | 92027-1981  | 2        |
| CLAMP (Ref # 92037)               | 92037-177   | 2        |
| DAMPER (Ref # 92075)              | 92075-1598  | 1        |
| DAMPER,MUFFLER (Ref # 92075A)     | 92075-1809  | 2        |
| DAMPER,MUFFLER (Ref # 92075B)     | 92075-1891  | 1        |
| SPRING (Ref # 92081)              | 92081-1526  | 3        |
| SEAL,MUFFLER (Ref # 92093)        | 92093-1014  | 1        |
| BOLT-UPSET (Ref # 112)            | 112B0608    | 2        |
| BOLT-FLANGED,6X12 (Ref # 130)     | 130G0612    | 1        |
| BOLT-FLANGED,8X30 (Ref # 130A)    | 130G0830    | 1        |
| BOLT-FLANGED,8X40 (Ref # 130B)    | 130G0840    | 1        |
| BOLT-UPSET-WSP (Ref # 187)        | 187B0612    | 1        |
| O RING,45MM (Ref # 670)           | 670E3045    | 2        |