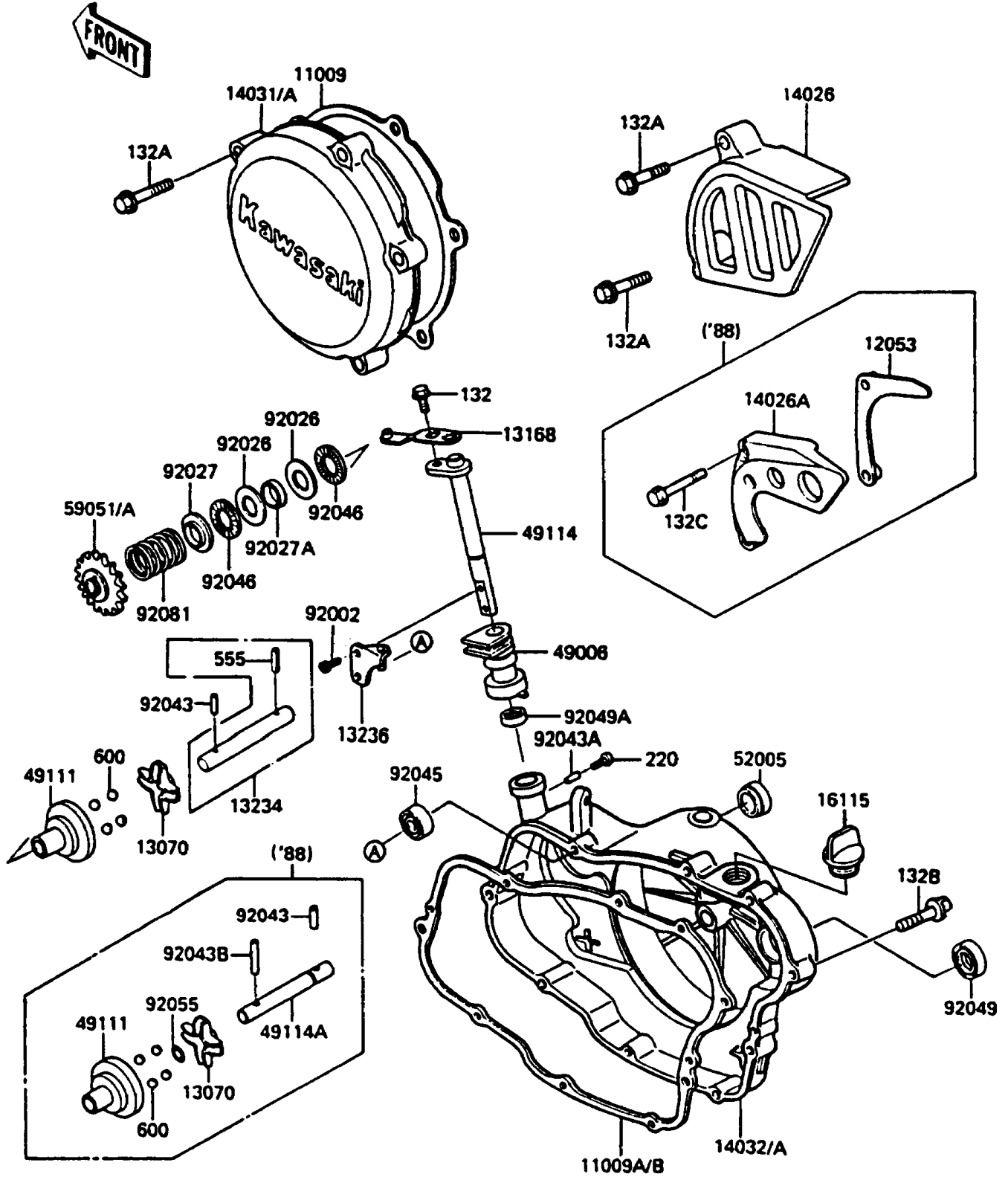


# 1986 KDX200 PARTS DIAGRAM

Engine Cover(s)

E1431-0183



# 1986 KDX200 PARTS LIST

## Engine Cover(s)

ITEM NAME	PART NUMBER	QUANTITY
GASKET,GENERATOR COVER (Ref # 11009)	11009-1266	1
GASKET,CLUTCH COVER (Ref # 11009A)	11009-1544	1
GUIDE (Ref # 13070)	13070-1122	1
LEVER (Ref # 13168)	13168-1283	1
SHAFT-COMP,GOVERNOR (Ref # 13234)	13234-1059	1
LEVER-COMP,GOVERNOR (Ref # 13236)	13236-1139	1
COVER-CHAIN (Ref # 14026)	14026-1119	1
COVER-GENERATOR (Ref # 14031)	14031-1109	1
COVER-CLUTCH (Ref # 14032)	14032-1203	1
CAP-OIL FILLER (Ref # 16115)	16115-018	1
BOOT (Ref # 49006)	49006-1180	1
HOLDER-GOVERNOR WEIGHT (Ref # 49111)	49111-1051	1
SHAFT-GOVERNOR (Ref # 49114)	49114-1055	1
GAUGE,OIL LEVEL (Ref # 52005)	52005-1055	1
GEAR-SPUR,GOVERNOR,18T (Ref # 59051)	59051-1153	1
BOLT,SOCKET,4X8 (Ref # 92002)	92002-1403	2
SPACER,15X28X1 (Ref # 92026)	92026-1238	2
COLLAR (Ref # 92027)	92027-1838	1
COLLAR,15.2X17X4 (Ref # 92027A)	92027-1839	1
PIN,3X12.8 (Ref # 92043)	92043-1256	1
PIN,2X9.8 (Ref # 92043A)	92043-1293	1
BEARING-BALL,#608 (Ref # 92045)	92045-1048	1
BEARING-NEEDLE,AXK1102 (Ref # 92046)	92046-1052	2
SEAL-OIL,SB18307 (Ref # 92049)	92049-013	1
SEAL-OIL,SDO8144 (Ref # 92049A)	92049-1207	1
SPRING,GOVERNOR (Ref # 92081)	92081-1769	1
BOLT-FLANGED-SMALL (Ref # 132)	132G0608	1
BOLT-FLANGED-SMALL (Ref # 132A)	132G0625	7
BOLT-FLANGED-SMALL (Ref # 132B)	132G0630	9

# 1986 KDX200 PARTS LIST

## Engine Cover(s)

ITEM NAME	PART NUMBER	QUANTITY
SCREW-PAN-CROS (Ref # 220)	220B0306	1
PIN-SPRING (Ref # 555)	555A0312	1
BALL-STEEL,5/16" (Ref # 600)	600A1000	4