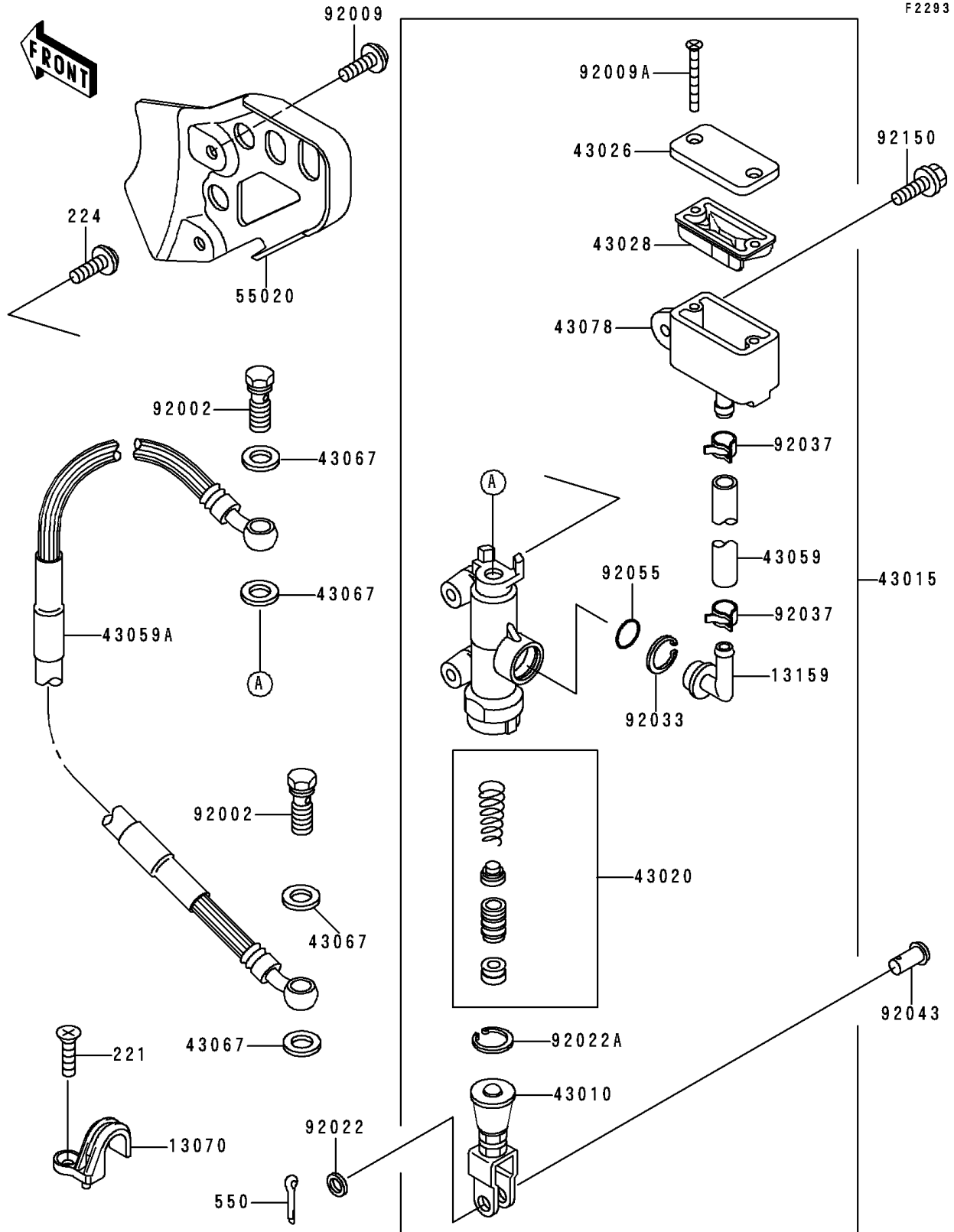


# 1997 KDX200 PARTS DIAGRAM

## Rear Master Cylinder



# 1997 KDX200 PARTS LIST

## Rear Master Cylinder

| ITEM NAME                                  | PART NUMBER | QUANTITY |
|--|-------------|----------|
| SCREW-CSK-CROS (Ref # 221)                 | 221B0510    | 2        |
| SCREW-PAN-WP-CROS (Ref # 224)              | 224B0614    | 2        |
| PIN-COTTER,2.0X15 (Ref # 550)              | 550D2015    | 1        |
| GUIDE,HOSE (Ref # 13070)                   | 13070-1275  | 2        |
| CONNECTOR (Ref # 13159)                    | 13159-1056  | 1        |
| ROD-ASSY-BRAKE (Ref # 43010)               | 43010-1068  | 1        |
| CYLINDER-ASSY-MASTER,RR (Ref # 43015)      | 43015-1515  | 1        |
| PISTON-COMP-BRAKE (Ref # 43020)            | 43020-1094  | 1        |
| CAP-BRAKE (Ref # 43026)                    | 43026-1075  | 1        |
| DIAPHRAGM (Ref # 43028)                    | 43028-1067  | 1        |
| HOSE-BRAKE (Ref # 43059)                   | 43059-1561  | 1        |
| HOSE-BRAKE,RR (Ref # 43059A)               | 43059-1863  | 1        |
| WASHER,10.5X15X1.5 (Ref # 43067)           | 43067-001   | 4        |
| RESERVOIR (Ref # 43078)                    | 43078-1122  | 1        |
| GUARD,RR M/CYLINDER&OIL TANK (Ref # 55020) | 55020-1487  | 1        |
| BOLT,OIL,L=23 (Ref # 92002)                | 92002-1888  | 2        |
| SCREW,6X10,WHITE (Ref # 92009)             | 92009-1286  | 2        |
| SCREW,4X40 (Ref # 92009A)                  | 92009-1596  | 2        |
| WASHER,8.5X13X1 (Ref # 92022)              | 92022-1028  | 1        |
| WASHER,CIRCRIP (Ref # 92022A)              | 92022-1601  | 1        |
| RING-SNAP,20.5MM (Ref # 92033)             | 92033-1186  | 1        |
| CLAMP (Ref # 92037)                        | 92037-1710  | 2        |
| PIN (Ref # 92043)                          | 92043-1039  | 1        |
| RING-O,MASTER CYLINDER (Ref # 92055)       | 92055-1251  | 1        |
| BOLT,6X20 (Ref # 92150)                    | 92150-1339  | 1        |