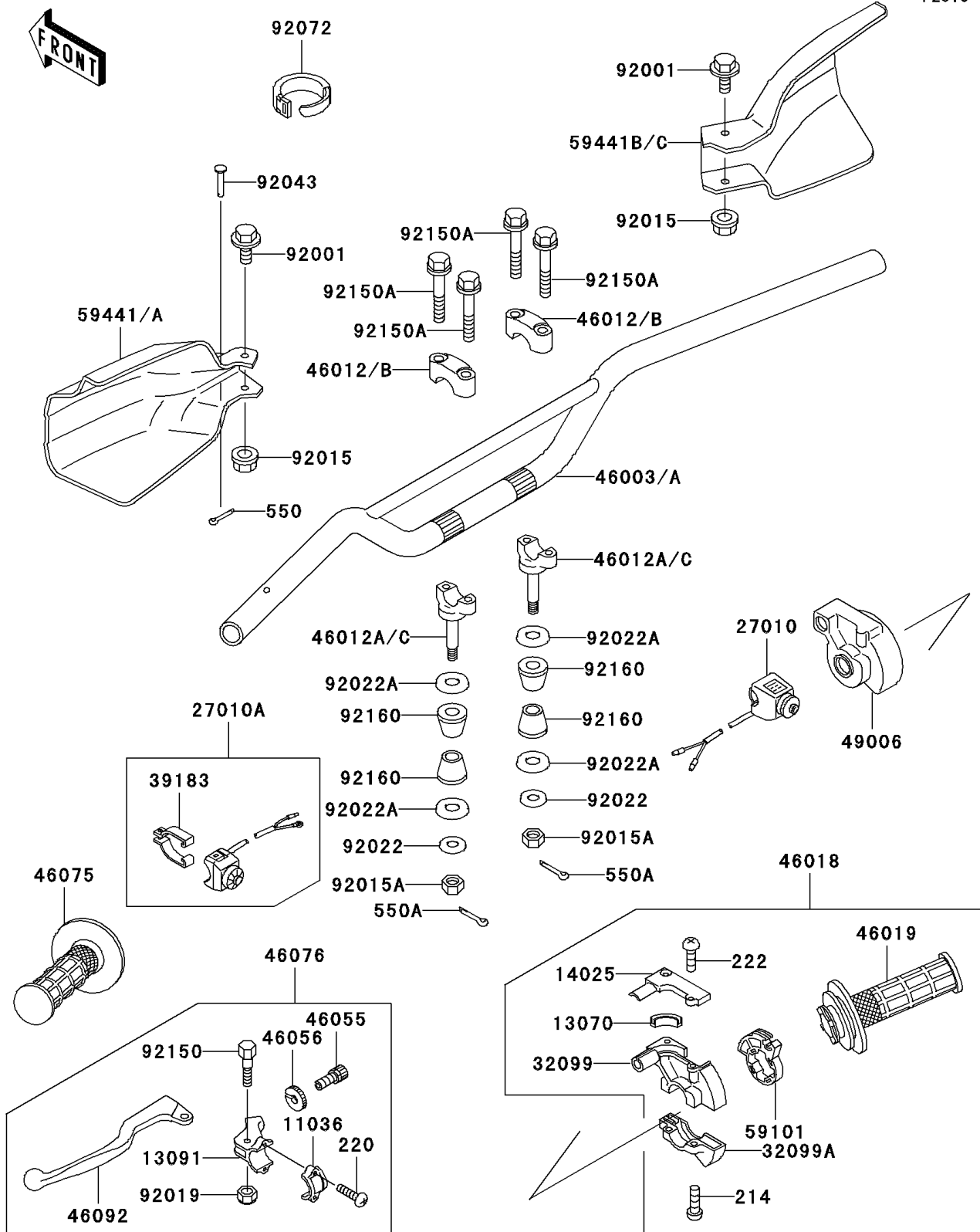


2005 KDX220R PARTS DIAGRAM

Handlebar

F2310



2005 KDX220R PARTS LIST

Handlebar

| ITEM NAME | PART NUMBER | QUANTITY |
|--|----------------|----------|
| SCREW-PAN+- (Ref # 214) | 214C0518 | 2 |
| BRACKET-A,LEVER HOLDER (Ref # 11036) | 11036-1297 | 1 |
| GUIDE,THROTTLE PEACE (Ref # 13070) | 13070-1073 | 1 |
| HOLDER,CLUTCH LEVER (Ref # 13091) | 13091-1131 | 1 |
| COVER,THROTTLE CASE UPP (Ref # 14025) | 14025-1646 | 1 |
| SWITCH,LIGHTING (Ref # 27010) | 27010-1279 | 1 |
| SWITCH,ENGINE STOP (Ref # 27010A) | 27010-1350 | 1 |
| CASE,THROTTLE UPP (Ref # 32099) | 32099-1036 | 1 |
| CASE,THROTTLE LWR (Ref # 32099A) | 32099-1044 | 1 |
| BAND-ASSY,ENGINE STOP SWITCH (Ref # 39183) | 39183-1059 | 1 |
| HANDLE,P.SILVER (Ref # 46003A) | 46003-1399-458 | 1 |
| HOLDER-HANDLE,UPP,P.SILVER (Ref # 46012) | 46012-0011-458 | 2 |
| HOLDER-HANDLE,LWR,P.SILVER (Ref # 46012A) | 46012-0015-458 | 2 |
| GRIP-ASSY-THROTTLE (Ref # 46018) | 46018-1161 | 1 |
| GRIP-ASSY,THROTTLE (Ref # 46019) | 46019-1054 | 1 |
| SCREW,CABLE ADJUST,8MM (Ref # 46055) | 46055-009 | 1 |
| NUT,CABLE ADJUST (Ref # 46056) | 46056-006 | 1 |
| GRIP,LH (Ref # 46075) | 46075-1024 | 1 |
| LEVER-ASSY-GRIP,CLUTCH (Ref # 46076) | 46076-1163 | 1 |
| LEVER-GRIP,CLUTCH (Ref # 46092) | 46092-1110 | 1 |
| BOOT,THROTTLE CASE (Ref # 49006) | 49006-1097 | 1 |
| REEL,THROTTLE (Ref # 59101) | 59101-1103 | 1 |
| COVER-HANDLE,LH,L.GREEN (Ref # 59441) | 59441-1094-290 | 1 |
| COVER-HANDLE,RH,L.GREEN (Ref # 59441B) | 59441-1108-290 | 1 |
| BOLT,FLANGED,6X10 (Ref # 92001) | 92001-1034 | 2 |
| NUT,LOCK,FLANGED,6MM (Ref # 92015) | 92015-1603 | 2 |
| NUT,LOCK,10MM (Ref # 92015A) | 92015-1962 | 2 |
| NUT,LOCK,6MM (Ref # 92019) | 92019-008 | 1 |
| WASHER,10.2X28X2 (Ref # 92022) | 92022-1088 | 2 |

2005 KDX220R PARTS LIST

Handlebar

| ITEM NAME | PART NUMBER | QUANTITY |
|----------------------------------|-------------|----------|
| WASHER (Ref # 92022A) | 92022-1737 | 4 |
| PIN,5X27.5 (Ref # 92043) | 92043-1434 | 1 |
| BAND,L=140 (Ref # 92072) | 92072-1293 | 2 |
| BOLT (Ref # 92150) | 92150-1291 | 1 |
| BOLT,FLANGED,8X35 (Ref # 92150A) | 92150-1696 | 4 |
| DAMPER (Ref # 92160) | 92160-1521 | 4 |
| SCREW-PAN-CROSS (Ref # 220) | 220F0514 | 2 |
| SCREW-CSK-RD-CROS (Ref # 222) | 222E0412 | 2 |
| PIN-COTTER,1.2X10 (Ref # 550) | 550D1210 | 1 |
| PIN-COTTER,2.0X20 (Ref # 550A) | 550D2020 | 2 |