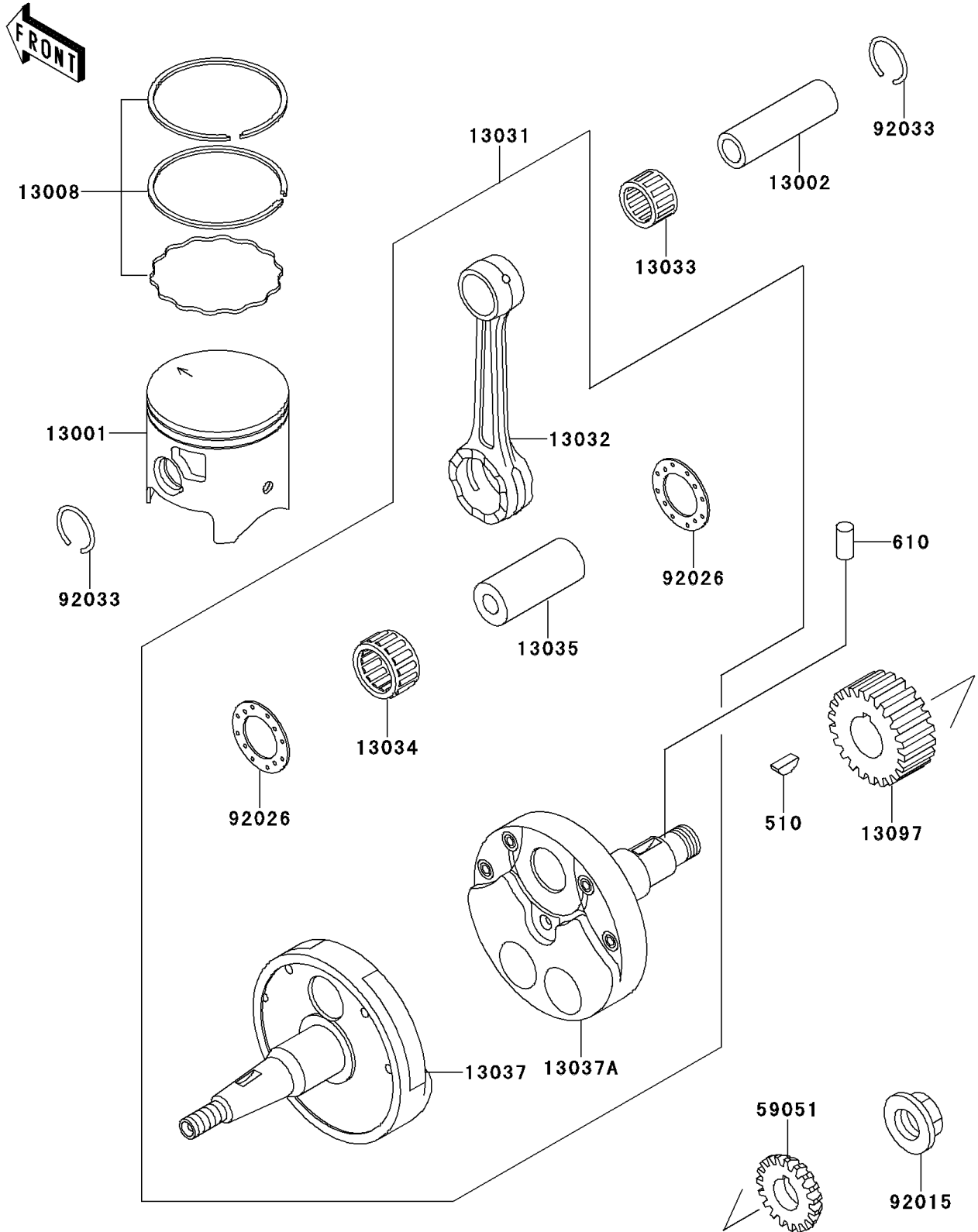


1997 KDX220R PARTS DIAGRAM

Crankshaft/Piston(s)

E1320



1997 KDX220R PARTS LIST

Crankshaft/Piston(s)

| ITEM NAME | PART NUMBER | QUANTITY |
|-------------------------------------|-------------|----------|
| KEY-WOODRUFF (Ref # 510) | 510A5100 | 1 |
| ROLLER,4X8 (Ref # 610) | 610A0408 | 1 |
| PISTON-ENGINE (Ref # 13001) | 13001-1423 | 1 |
| PIN-PISTON (Ref # 13002) | 13002-1103 | 1 |
| RING-SET-PISTON (Ref # 13008) | 13008-1159 | 1 |
| CRANKSHAFT-COMP (Ref # 13031) | 13031-1382 | 1 |
| ROD-CONNECTING (Ref # 13032) | 13032-1210 | 1 |
| BEARING-SMALL END (Ref # 13033) | 13033-1056 | 1 |
| BEARING-BIG END,B4 (Ref # 13034) | 13034-1081 | 1 |
| PIN-CRANK (Ref # 13035) | 13035-1010 | 1 |
| CRANKSHAFT,LH (Ref # 13037) | 13037-1488 | 1 |
| CRANKSHAFT,RH (Ref # 13037A) | 13037-1490 | 1 |
| GEAR-PRIMARY SPUR,22T (Ref # 13097) | 13097-1320 | 1 |
| GEAR-SPUR,WATER PUMP (Ref # 59051) | 59051-1207 | 1 |
| NUT,16MM (Ref # 92015) | 92015-1581 | 1 |
| SPACER,22.5X37X1.0 (Ref # 92026) | 92026-011 | 2 |
| RING-SNAP,PISTON PIN (Ref # 92033) | 92033-1242 | 2 |