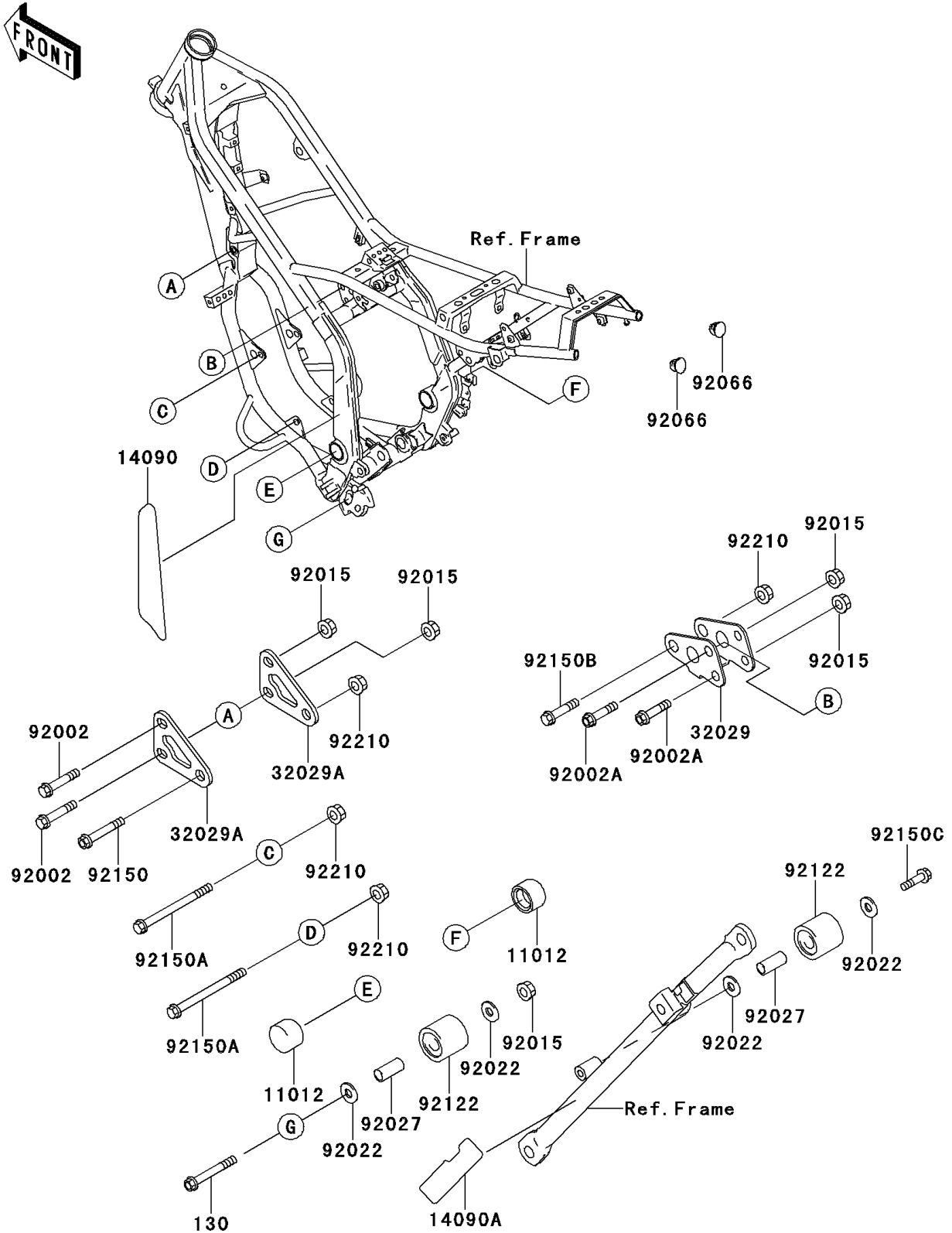


# 1997 KDX220R PARTS DIAGRAM

## Frame Fittings

F2131



# 1997 KDX220R PARTS LIST

## Frame Fittings

| ITEM NAME                            | PART NUMBER | QUANTITY |
|--------------------------------------|-------------|----------|
| BOLT-FLANGED,8X55 (Ref # 130)        | 130G0855    | 1        |
| CAP,AXLE NUT (Ref # 11012)           | 11012-1591  | 2        |
| COVER (Ref # 14090)                  | 14090-1514  | 1        |
| COVER (Ref # 14090A)                 | 14090-1557  | 1        |
| BRACKET-ENGINE,HEAD,RR (Ref # 32029) | 32029-1913  | 1        |
| BRACKET-ENGINE (Ref # 32029A)        | 32029-1944  | 2        |
| BOLT (Ref # 92002)                   | 92002-1221  | 2        |
| BOLT,FLANGED,8X47 (Ref # 92002A)     | 92002-1850  | 2        |
| NUT,8MM (Ref # 92015)                | 92015-1432  | 5        |
| WASHER,8.5X20X1.6 (Ref # 92022)      | 92022-1561  | 4        |
| COLLAR,CHAIN ROLLER (Ref # 92027)    | 92027-1670  | 2        |
| PLUG (Ref # 92066)                   | 92066-1093  | 2        |
| ROLLER,CHAIN GUIDE (Ref # 92122)     | 92122-1153  | 2        |
| BOLT,FLANGED,10X57 (Ref # 92150)     | 92150-1227  | 1        |
| BOLT,FLANGED,10X105 (Ref # 92150A)   | 92150-1624  | 2        |
| BOLT,FLANGED,10X51 (Ref # 92150B)    | 92150-1719  | 1        |
| BOLT,FLANGED,8X40 (Ref # 92150C)     | 92150-1961  | 1        |
| NUT,LOCK,FLANGED,10MM (Ref # 92210)  | 92210-1080  | 4        |