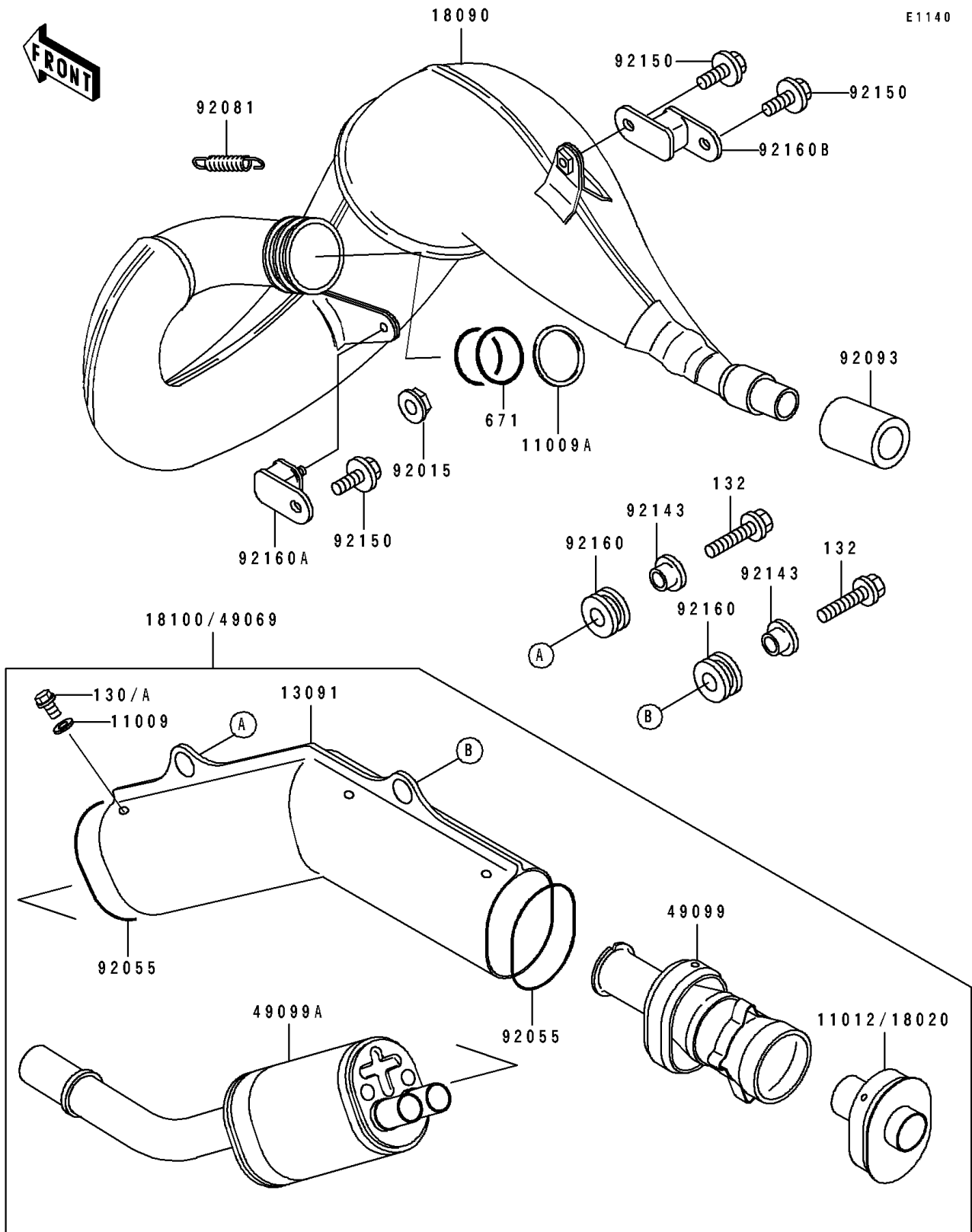


# 1993 KDX250 PARTS DIAGRAM

Muffler



# 1993 KDX250 PARTS LIST

## Muffler

ITEM NAME	PART NUMBER	QUANTITY
GASKET,5.5X13X1.2 (Ref # 11009)	11009-1881	6
GASKET,EXHAUST PIPE (Ref # 11009A)	11009-1949	1
BAFFLE (Ref # 18020)	18020-1172	1
BODY-COMP-MUFFLER (Ref # 18090)	18090-1085	1
BODY-ASSY-MUFFLER (Ref # 18100)	18100-1051	1
BAFFLE-PIPE MUFFLER,RR (Ref # 49099)	49099-1298	1
BAFFLE-PIPE MUFFLER,FR (Ref # 49099A)	49099-1299	1
NUT,FLANGED,6MM (Ref # 92015)	92015-1078	1
RING-O,BAFFLE PIPE (Ref # 92055)	92055-1512	2
SPRING (Ref # 92081)	92081-1526	2
SEAL (Ref # 92093)	92093-1289	1
COLLAR (Ref # 92143)	92143-1450	2
BOLT,6X12 (Ref # 92150)	92150-1435	3
DAMPER,MUFFLER CONNECTOR (Ref # 92160)	92160-1151	2
DAMPER,MUFFLER,FR (Ref # 92160A)	92160-1176	1
DAMPER,MUFFLER,RR (Ref # 92160B)	92160-1201	1
BOLT-FLANGED (Ref # 130A)	130G0510	6
BOLT-FLANGED-SMALL (Ref # 132)	132G0825	2
O RING,50MM (Ref # 671)	671E2550	2