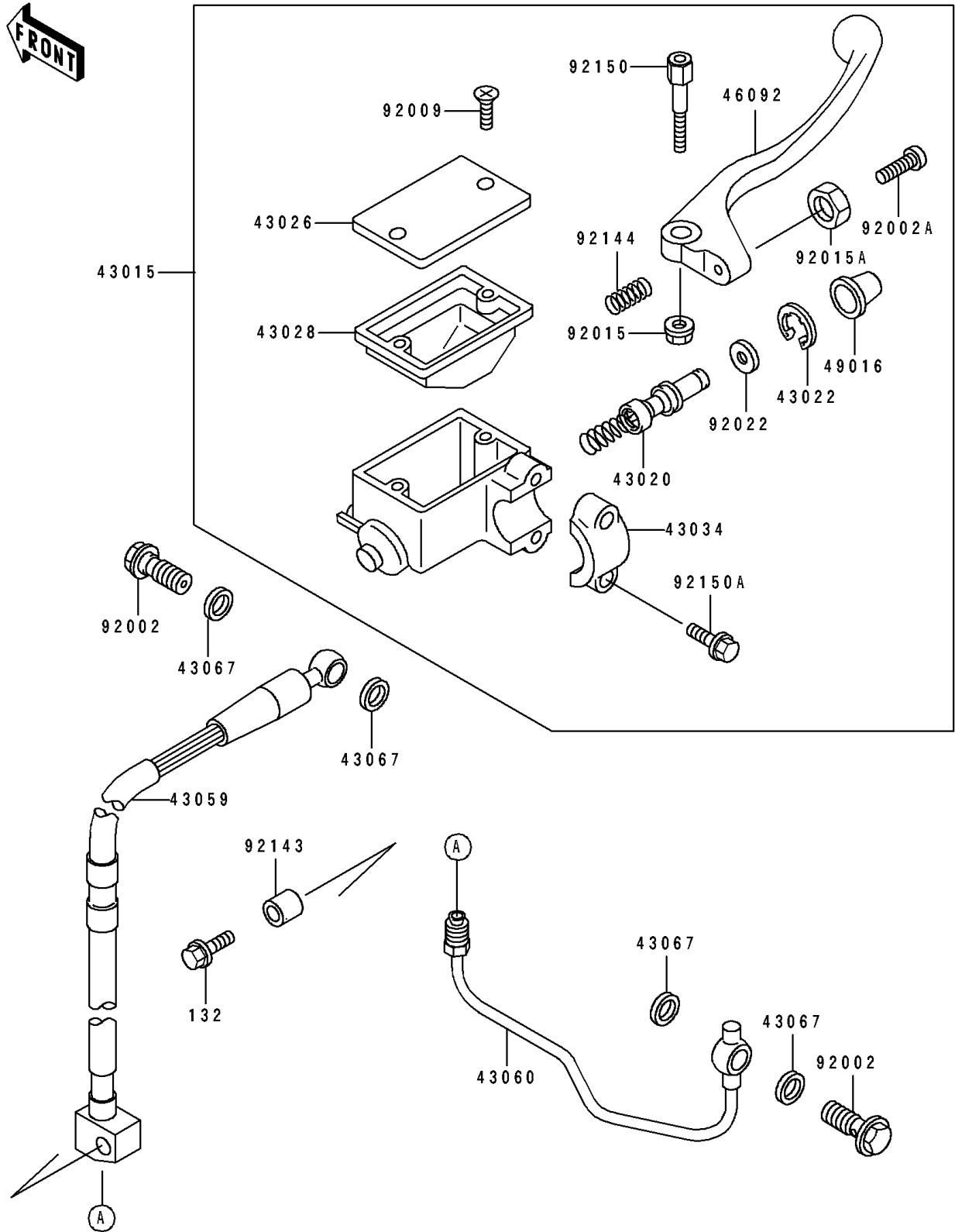


# 1993 KDX250 PARTS DIAGRAM

## Front Master Cylinder

F2291



# 1993 KDX250 PARTS LIST

## Front Master Cylinder

| ITEM NAME                                | PART NUMBER | QUANTITY |
|--|-------------|----------|
| CYLINDER-ASSY-MASTER,FR (Ref # 43015)    | 43015-1518  | 1        |
| PISTON-COMP-BRAKE (Ref # 43020)          | 43020-1071  | 1        |
| STOPPER-BRAKE,PISTON (Ref # 43022)       | 43022-1010  | 1        |
| CAP-BRAKE (Ref # 43026)                  | 43026-1075  | 1        |
| DIAPHRAGM (Ref # 43028)                  | 43028-1067  | 1        |
| HOLDER-BRAKE (Ref # 43034)               | 43034-1110  | 1        |
| HOSE-BRAKE,FR (Ref # 43059)              | 43059-1693  | 1        |
| PIPE-BRAKE,FR (Ref # 43060)              | 43060-1079  | 1        |
| WASHER,10.5X15X1.5 (Ref # 43067)         | 43067-001   | 4        |
| LEVER-GRIP,FRONT BRAKE (Ref # 46092)     | 46092-1148  | 1        |
| COVER-SEAL,MASTER CYLINDER (Ref # 49016) | 49016-1044  | 1        |
| BOLT,OIL,L=23 (Ref # 92002)              | 92002-1888  | 2        |
| BOLT,ADJUST (Ref # 92002A)               | 92002-1893  | 1        |
| SCREW,4MM (Ref # 92009)                  | 92009-1458  | 2        |
| NUT,FLANGED,6MM (Ref # 92015)            | 92015-1528  | 1        |
| NUT,ADJUST (Ref # 92015A)                | 92015-1642  | 1        |
| WASHER (Ref # 92022)                     | 92022-1814  | 1        |
| COLLAR,6.5X9.5X17 (Ref # 92143)          | 92143-1408  | 1        |
| SPRING,RETURN (Ref # 92144)              | 92144-1103  | 1        |
| BOLT,LEVER SET (Ref # 92150)             | 92150-1383  | 1        |
| BOLT (Ref # 92150A)                      | 92150-1452  | 2        |
| BOLT-FLANGED-SMALL (Ref # 132)           | 132G0630    | 1        |