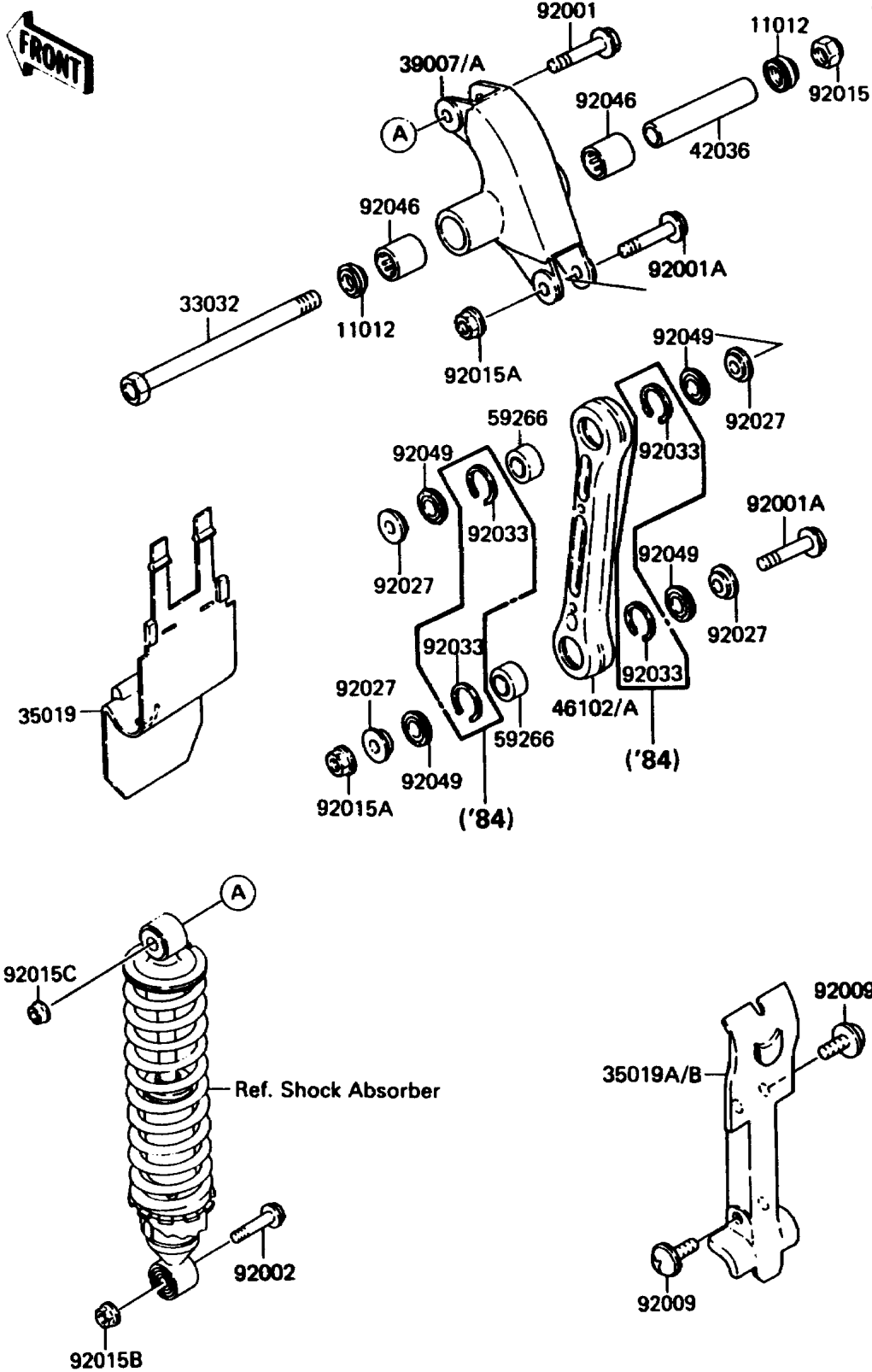


# 1984 KDX80 PARTS DIAGRAM

Rear Suspension

F2150-0038



# 1984 KDX80 PARTS LIST

## Rear Suspension

ITEM NAME	PART NUMBER	QUANTITY
CAP (Ref # 11012)	11012-1263	2
SHAFT-SUSPENSION ARM,L=168 (Ref # 33032)	33032-1032	1
FLAP,ARM-SUSP (Ref # 35019)	35019-1054	1
FLAP,ROD (Ref # 35019A)	35019-1110	1
ARM-SUSP,UNI-TRAK (Ref # 39007)	39007-1020	1
SLEEVE,SUSPENSION ARM,L=86 (Ref # 42036)	42036-1068	1
ROD,SUSPENSION (Ref # 46102)	46102-1055	1
JOINT-BALL,ROD (Ref # 59266)	59266-1012	2
BOLT,FLANGED,10X42 (Ref # 92001)	92001-1711	1
BOLT,FLANGED,12X48 (Ref # 92001A)	92001-1736	2
BOLT,FLANGED,10X41 (Ref # 92002)	92002-1385	1
SCREW,6X10,WHITE (Ref # 92009)	92009-1286	4
NUT,LOCK,12MM (Ref # 92015)	92015-1063	1
NUT,FLANGED,12MM (Ref # 92015A)	92015-1156	2
NUT,LOCK,FLANGED,10MM (Ref # 92015B)	92015-1338	1
NUT,FLANGED,10MM (Ref # 92015C)	92015-1415	1
COLLAR,ROD (Ref # 92027)	92027-1523	4
RING-SNAP,22.3MM (Ref # 92033)	92033-1071	4
BEARING-NEEDLE,ARM-SUSP (Ref # 92046)	92046-1050	2
SEAL-OIL,ROD (Ref # 92049)	92049-1099	4