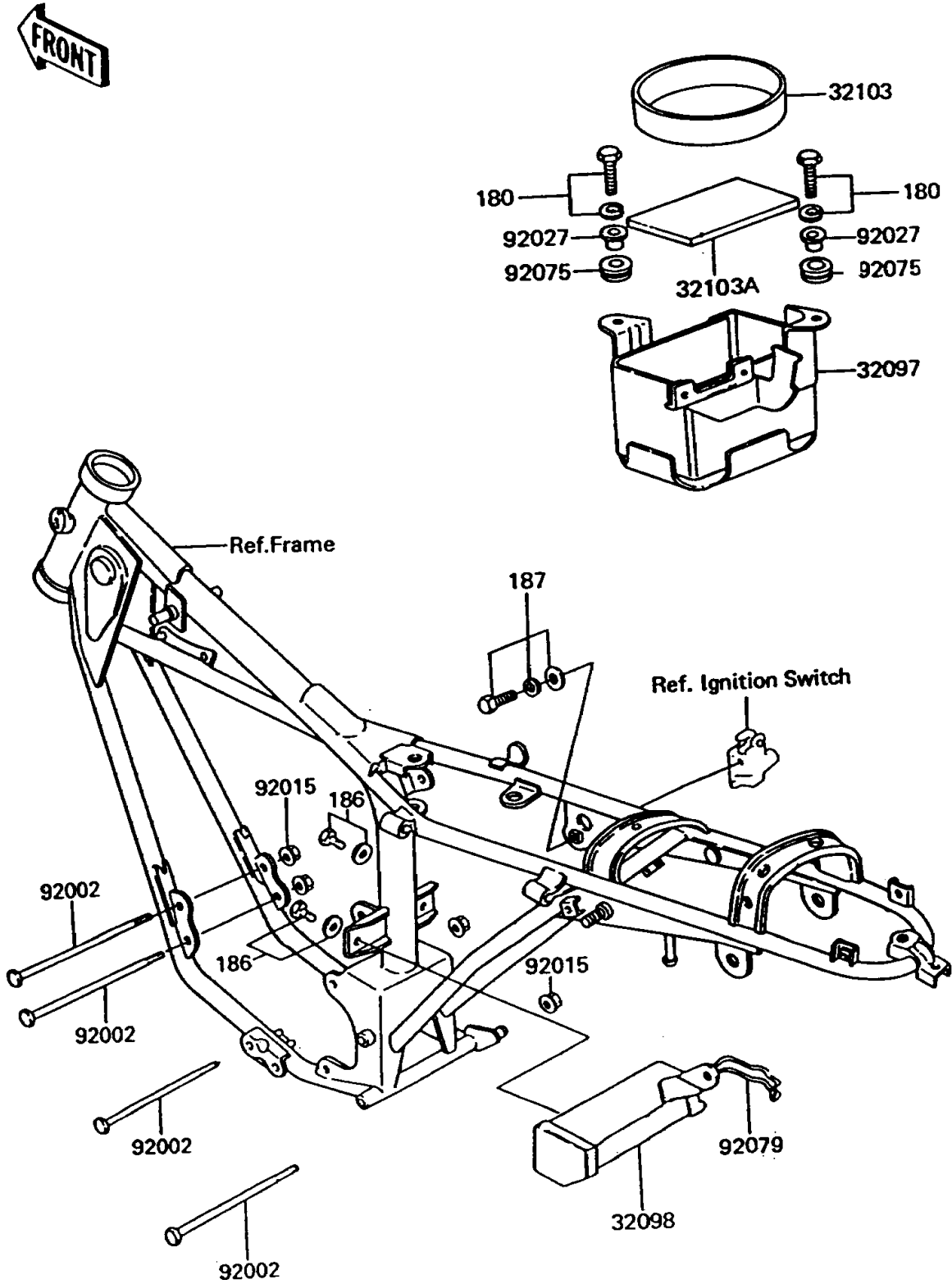


1992 KE100 PARTS DIAGRAM

Frame Fittings

F2131



1992 KE100 PARTS LIST

Frame Fittings

| ITEM NAME | PART NUMBER | QUANTITY |
|-------------------------------------|-------------|----------|
| BOLT-UPSET-WS (Ref # 180) | 180B0618 | 2 |
| BOLT-UPSET-WP (Ref # 186) | 186B0614 | 2 |
| BOLT-UPSET-WSP (Ref # 187) | 187B0612 | 1 |
| CASE-BATTERY (Ref # 32097) | 32097-1009 | 1 |
| CASE-TOOL (Ref # 32098) | 32098-018 | 1 |
| DAMPER,BATTERY BOTTOM (Ref # 32103) | 32103-023 | 1 |
| DAMPER,BATTERY (Ref # 32103A) | 32103-027 | 1 |
| BOLT,10X115 (Ref # 92002) | 92002-1072 | 4 |
| NUT,FLANGED,10MM (Ref # 92015) | 92015-1180 | 4 |
| COLLAR,L=7 (Ref # 92027) | 92027-153 | 2 |
| DAMPER (Ref # 92075) | 92075-051 | 2 |
| CLAMP,TOOL CASE (Ref # 92079) | 92079-002 | 1 |