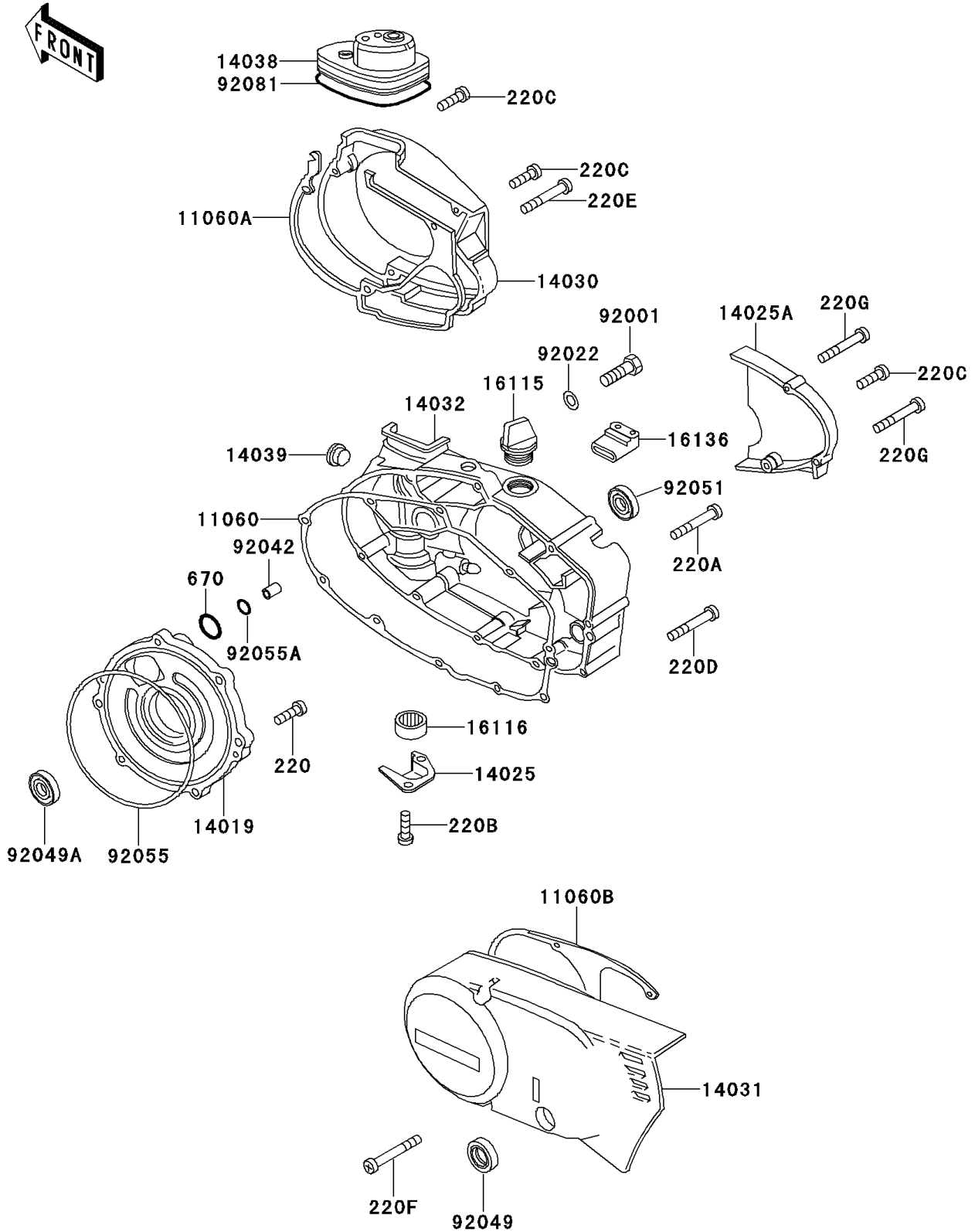


2000 KE100 PARTS DIAGRAM

Engine Cover(s)

E1431



2000 KE100 PARTS LIST

Engine Cover(s)

ITEM NAME	PART NUMBER	QUANTITY
SCREW-PAN-CROS,6X20,WHITE (Ref # 220)	220B0620	6
SCREW-PAN-CROS,6X45 (Ref # 220A)	220B0645	2
SCREW-PAN-CROS (Ref # 220B)	220X0612	2
SCREW-PAN-CROS (Ref # 220C)	220X0620	3
SCREW-PAN-CROS (Ref # 220D)	220X0630	6
SCREW-PAN-CROS (Ref # 220E)	220X0635	1
SCREW-PAN-CROS (Ref # 220F)	220X0645	3
SCREW-PAN-CROS (Ref # 220G)	220X0675	2
O RING,26MM (Ref # 670)	670B3026	1
GASKET,CLUTCH COVER (Ref # 11060)	11060-1198	1
GASKET,CARBURETOR COVER (Ref # 11060A)	11060-1201	1
GASKET,GENERATOR COVER (Ref # 11060B)	11060-1202	1
COVER,ROTARY DISC VALVE (Ref # 14019)	14019-056	1
COVER,DRAIN PLUG (Ref # 14025)	14025-1137	1
COVER,OIL PUMP (Ref # 14025A)	14025-1185	1
COVER-CARBURETOR (Ref # 14030)	14030-1011	1
COVER-GENERATOR (Ref # 14031)	14031-1043	1
COVER-CLUTCH (Ref # 14032)	14032-1096	1
BOOT,CARBURETOR (Ref # 14038)	14038-035	1
CAP,RUBBER (Ref # 14039)	14039-001	1
CAP-OIL FILLER (Ref # 16115)	16115-018	1
PLUG,25X12 (Ref # 16116)	16116-006	1
GROMMET,OVERFLOW PIPE (Ref # 16136)	16136-007	1
BOLT,6X14 (Ref # 92001)	92001-1935	1
WASHER,6.1X12X1 (Ref # 92022)	92022-077	1
PIN,DOWEL,8X16 (Ref # 92042)	92042-017	1
SEAL-OIL,SB12205 (Ref # 92049)	92049-004	1
SEAL-OIL (Ref # 92049A)	92049-1482	1
SEAL-OIL,TB16267 (Ref # 92051)	92051-003	1

2000 KE100 PARTS LIST

Engine Cover(s)

ITEM NAME	PART NUMBER	QUANTITY
RING-O,100MM (Ref # 92055)	92055-010	1
RING-O,7.8X3.5 (Ref # 92055A)	92055-029	1
SPRING,COIL (Ref # 92081)	92081-047	1