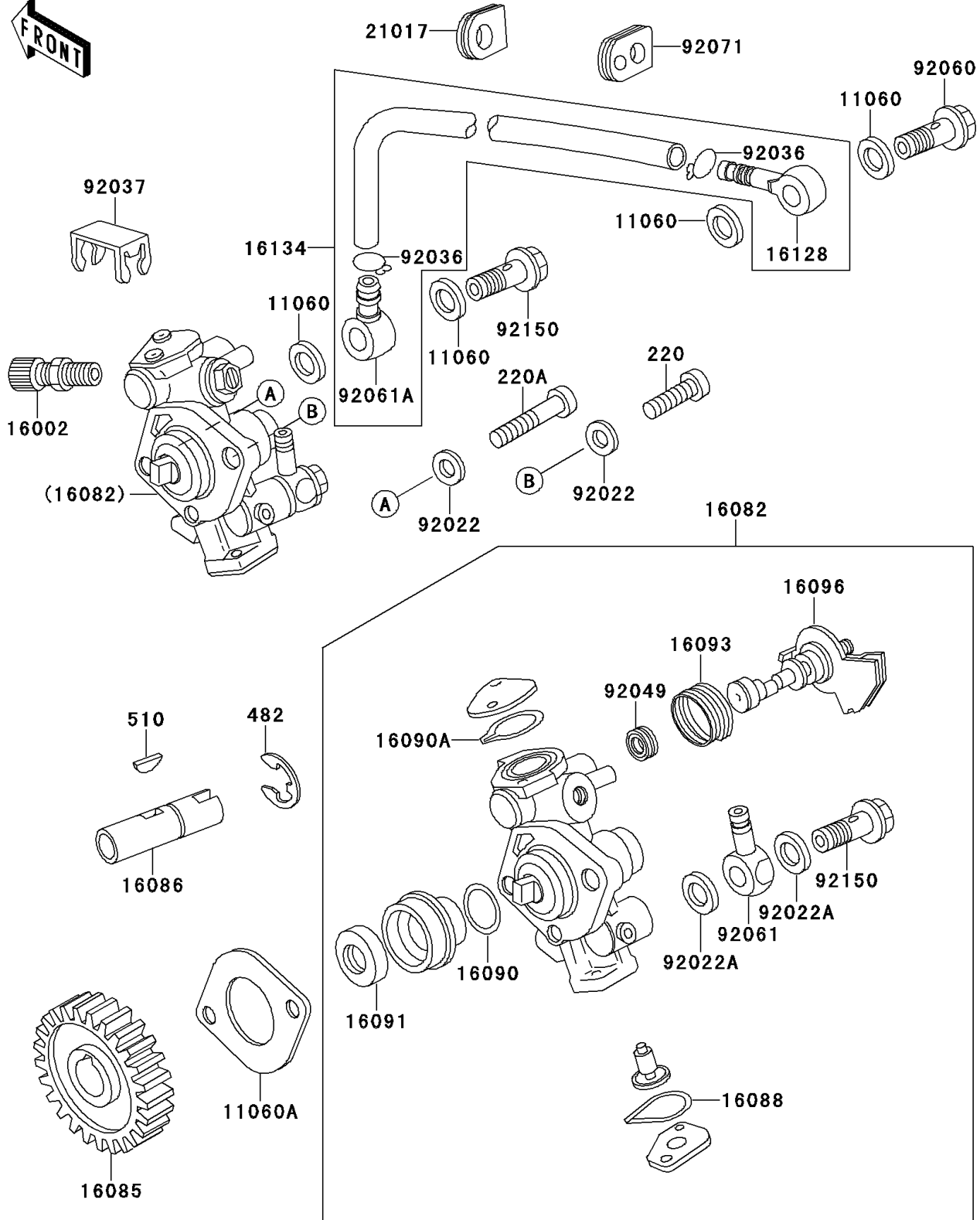


2000 KE100 PARTS DIAGRAM

Oil Pump

E1710



2000 KE100 PARTS LIST

Oil Pump

ITEM NAME	PART NUMBER	QUANTITY
SCREW-PAN-CROS (Ref # 220)	220B0514	1
SCREW-PAN-CROS (Ref # 220A)	220B0528	1
CIRCLIP-TYPE-E,9MM (Ref # 482)	482K9000	1
KEY-WOODRUFF (Ref # 510)	510A3100	1
GASKET,6X12X1.13 (Ref # 11060)	11060-1155	4
GASKET,OIL PUMP (Ref # 11060A)	11060-1160	1
ADJUSTER-CABLE (Ref # 16002)	16002-012	1
PUMP-ASSY-OIL (Ref # 16082)	16082-067	1
GEAR,OIL PUMP (Ref # 16085)	16085-004	1
SHAFT,OIL PUMP (Ref # 16086)	16086-001	1
RING-O,CAP,BANJO SIDE (Ref # 16088)	16088-002	1
RING-O,OIL PUMP SHAFT (Ref # 16090)	16090-002	1
RING-O,CAP,CAMSHAFT SIDE (Ref # 16090A)	16090-004	1
SEAL-OIL,OIL PUMP SHAFT (Ref # 16091)	16091-001	1
SPRING,OIL PUMP LEVER (Ref # 16093)	16093-006	1
LEVER-OIL PUMP (Ref # 16096)	16096-012	1
VALVE-CHECK (Ref # 16128)	16128-009	1
TUBE,OIL (Ref # 16134)	16134-021	1
GROMMET (Ref # 21017)	21017-002	1
WASHER,5.5X10.5X0.8 (Ref # 92022)	92022-037	2
WASHER,6.1X12X1 (Ref # 92022A)	92022-077	2
RING-SNAP (Ref # 92036)	92036-022	2
CLAMP,OIL PUMP CABLE (Ref # 92037)	92037-1107	1
SEAL-OIL,CAMSHAFT,"X"TYPE (Ref # 92049)	92049-1294	1
BOLT,BANJO,L=13.5 (Ref # 92060)	92060-008	1
FITTING,BANJO (Ref # 92061)	92061-009	1
FITTING,BANJO (Ref # 92061A)	92061-018	1
GROMMET,OIL PIPE (Ref # 92071)	92071-067	1
BOLT,BANJO,6X16 (Ref # 92150)	92150-1982	2