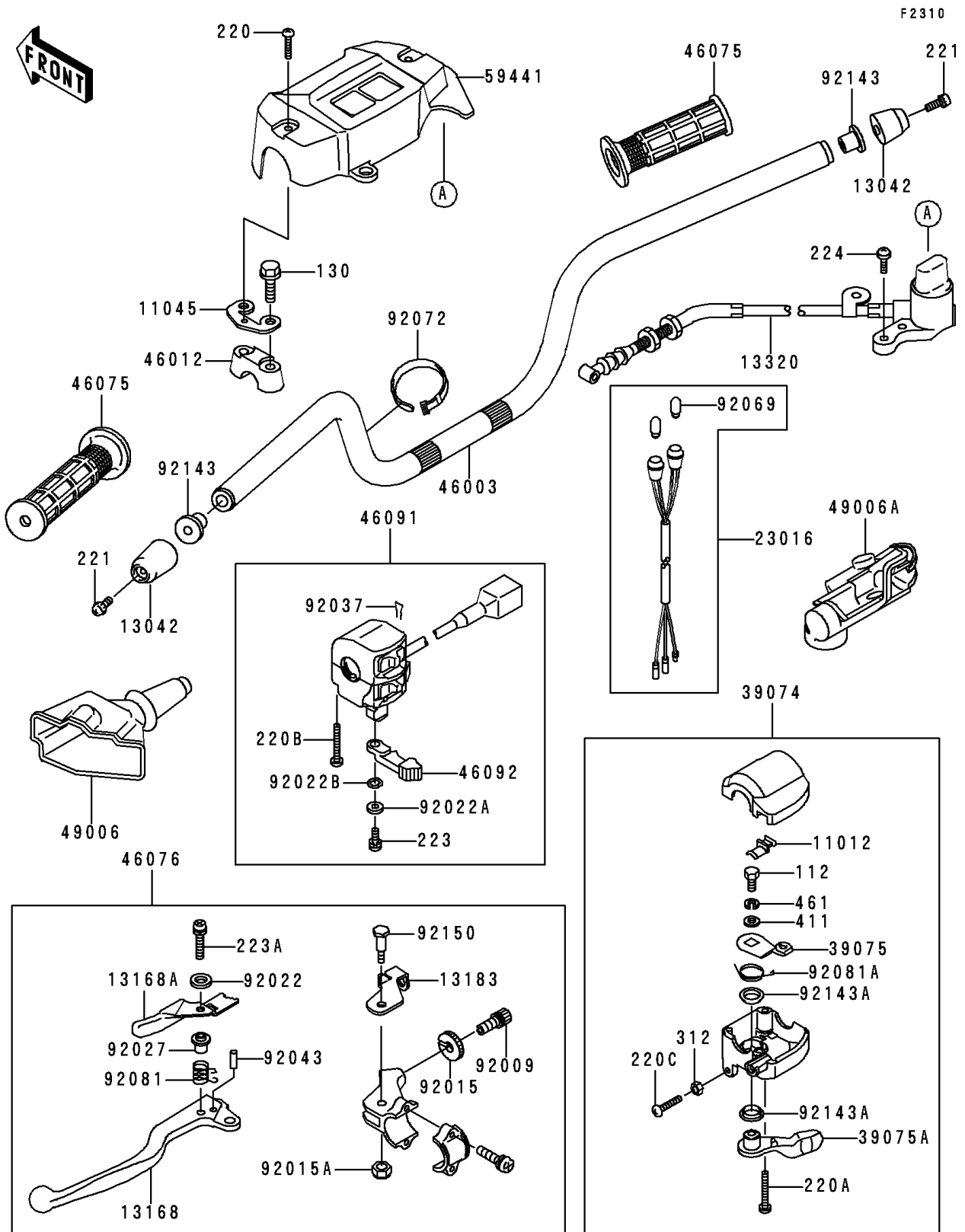


# 1996 Lakota 300 PARTS DIAGRAM

Handlebar



# 1996 Lakota 300 PARTS LIST

## Handlebar

ITEM NAME	PART NUMBER	QUANTITY
BOLT-UPSET (Ref # 112)	112D0614	1
BOLT-FLANGED (Ref # 130)	130P0860	4
SCREW-PAN-CROS,4X20 (Ref # 220)	220C0420	2
SCREW-PAN-CROS (Ref # 220A)	220C0530	2
CAP (Ref # 11012)	11012-1425	1
BRACKET,HANDLE COVER (Ref # 11045)	11045-1925	2
WEIGHT,HANDLE (Ref # 13042)	13042-1005	2
LEVER (Ref # 13168)	13168-1449	1
LEVER,LOCK (Ref # 13168A)	13168-1450	1
PLATE,LOCK (Ref # 13183)	13183-1609	1
LEVER-ASSY,REVERSE (Ref # 13320)	13320-1010	1
LAMP-ASSY,NEUTRAL&REVERSE (Ref # 23016)	23016-1083	1
LEVER-ASSY-THROTTLE (Ref # 39074)	39074-1055	1
LEVER-THROTTLE,ARM (Ref # 39075)	39075-1054	1
LEVER-THROTTLE (Ref # 39075A)	39075-1059	1
HANDLE,SILVER NO.40 (Ref # 46003)	46003-1410-5A	1
HOLDER-HANDLE (Ref # 46012)	46012-1168	2
GRIP (Ref # 46075)	46075-1056	2
LEVER-ASSY-GRIP,LH (Ref # 46076)	46076-1178	1
HOUSING-ASSY-CONTROL,LH (Ref # 46091)	46091-1462	1
LEVER-GRIP,CHOKE (Ref # 46092)	46092-1149	1
BOOT,CLUTCH LEVER (Ref # 49006)	49006-1057	1
BOOT,RH (Ref # 49006A)	49006-1198	1
COVER-HANDLE (Ref # 59441)	59441-1111	1
SCREW,CABLE ADJUST,8MM (Ref # 92009)	92009-1435	1
NUT,CABLE ADJUST LOCK,8MM (Ref # 92015)	92015-1596	1
NUT (Ref # 92015A)	92015-1829	1
WASHER,4MM (Ref # 92022)	92022-1647	1
WASHER,5MM (Ref # 92022A)	92022-1837	1

# 1996 Lakota 300 PARTS LIST

## Handlebar

ITEM NAME	PART NUMBER	QUANTITY
WASHER,WAVE,5MM (Ref # 92022B)	92022-1838	1
COLLAR,RETURN SPRING (Ref # 92027)	92027-1336	1
CLAMP,CLIP (Ref # 92037)	92037-1836	1
PIN,SPRING,3X16 (Ref # 92043)	92043-1268	1
BULB,12V3W T-7 (Ref # 92069)	92069-1020	2
BAND,L=149 (Ref # 92072)	92072-031	1
SPRING,LOCK RETURN (Ref # 92081)	92081-1358	1
SPRING (Ref # 92081A)	92081-1685	1
COLLAR,L=9.6 (Ref # 92143)	92143-1016	2
COLLAR (Ref # 92143A)	92143-1138	2
BOLT (Ref # 92150)	92150-1420	1
SCREW-PAN-CROS (Ref # 220B)	220C0535	2
SCREW-PAN-CROS,6X30,BLACK (Ref # 220C)	220C0630	1
SCREW-CSK-CROS (Ref # 221)	221C0650	2
SCREW-PAN-WS-CROS (Ref # 223)	223C0512	1
SCREW-PAN-WS-CROS (Ref # 223A)	223D0420	1
SCREW-PAN-WP-CROS,5X20 (Ref # 224)	224B0520	2
NUT-HEX,6MM,BLACK (Ref # 312)	312C0600	1
WASHER-PLAIN,6MM (Ref # 411)	411E0600	1
WASHER-SPRING (Ref # 461)	461L0600	1