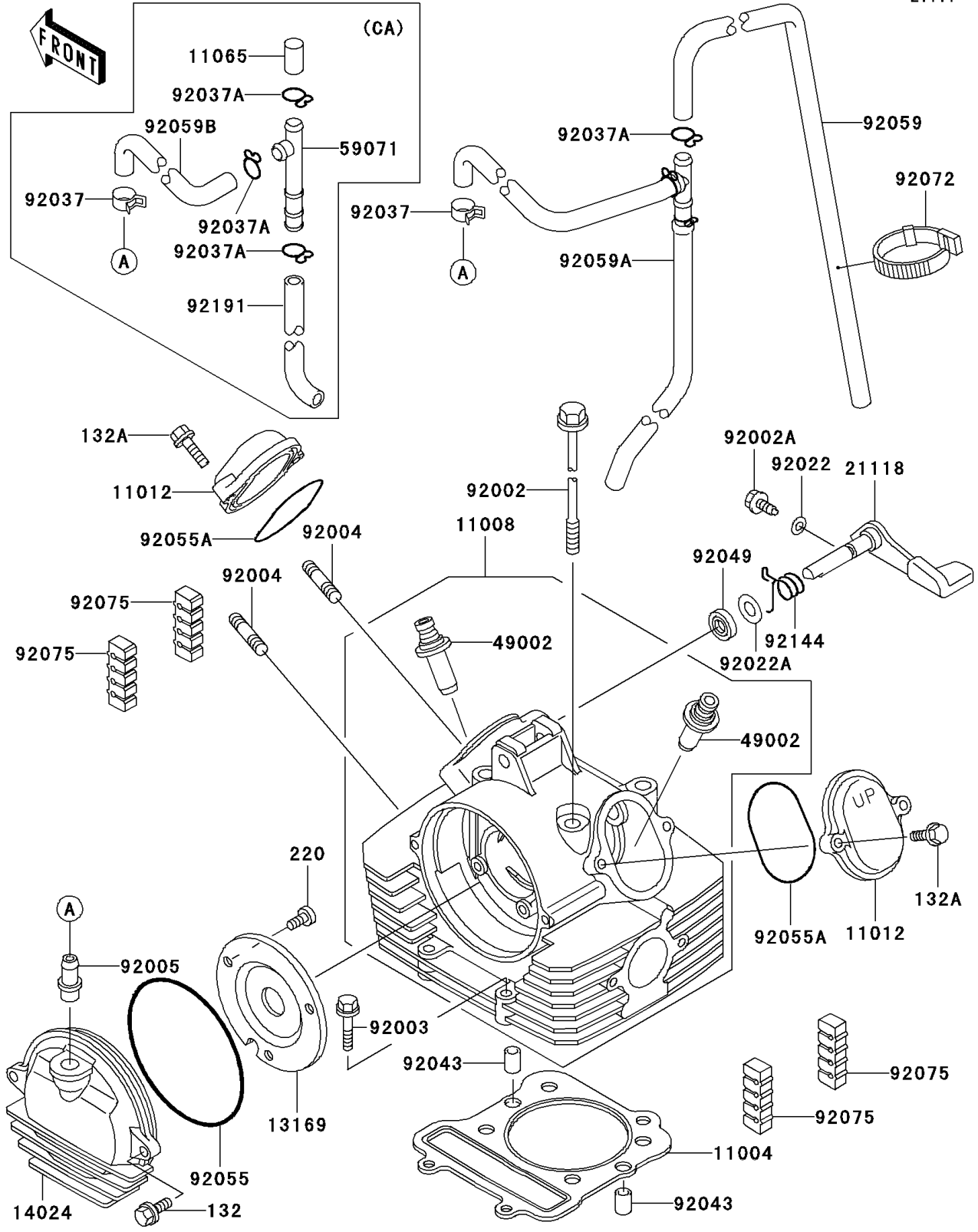


# 2002 Lakota Sport PARTS DIAGRAM

Cylinder Head

E1111



## 2002 Lakota Sport PARTS LIST

### Cylinder Head

ITEM NAME	PART NUMBER	QUANTITY
BOLT-FLANGED-SMALL (Ref # 132)	132Y0616	2
BOLT-FLANGED-SMALL (Ref # 132A)	132Y0625	4
SCREW-PAN-CROS,6X10 (Ref # 220)	220B0610	3
GASKET-HEAD (Ref # 11004)	11004-1340	1
HEAD-COMP-CYLINDER (Ref # 11008)	11008-1292	1
CAP,ROCKER ARM (Ref # 11012)	11012-1486	2
PLATE,CAMSHAFT COVER (Ref # 13169)	13169-1961	1
COVER,CAMSHAFT (Ref # 14024)	14024-1060	1
DECOMPRESSOR,LEVER (Ref # 21118)	21118-1062	1
GUIDE-VALVE (Ref # 49002)	49002-1092	AR
BOLT,8X233 (Ref # 92002)	92002-1515	4
BOLT,DECOMPRESSOR (Ref # 92002A)	92002-1962	1
BOLT,FLANGED,6X32 (Ref # 92003)	92003-229	2
STUD,8X30 (Ref # 92004)	92004-1121	2
FITTING,BREATHER PIPE (Ref # 92005)	92005-1124	1
WASHER,6.1X12X1 (Ref # 92022)	92022-077	1
WASHER,10.2X20X0.5 (Ref # 92022A)	92022-1649	1
CLAMP (Ref # 92037)	92037-1181	1
PIN,8.2X10X14 (Ref # 92043)	92043-1264	2
SEAL-OIL (Ref # 92049)	92049-1542	1
RING-O,99MM (Ref # 92055)	92055-107	1
RING-O,53.5X2.6 (Ref # 92055A)	92055-112	2
DAMPER (Ref # 92075)	92075-1657	4
SPRING,DECOMPRESSOR (Ref # 92144)	92144-1154	1
CAP (Ref # 11065)	11065-1075	1
JOINT (Ref # 59071)	59071-1124	1
CLAMP,FUEL TUBE (Ref # 92037A)	92037-1271	1
CLAMP,FUEL TUBE (Ref # 92037A)	92037-1271	3
TUBE,BREATHER (Ref # 92059)	92059-1511	1

## 2002 Lakota Sport PARTS LIST

### Cylinder Head

ITEM NAME	PART NUMBER	QUANTITY
TUBE,ASSY (Ref # 92059A)	92059-1787	1
TUBE (Ref # 92059B)	92059-1789	1
BAND,L=149 (Ref # 92072)	92072-031	1
TUBE (Ref # 92191)	92191-1170	1