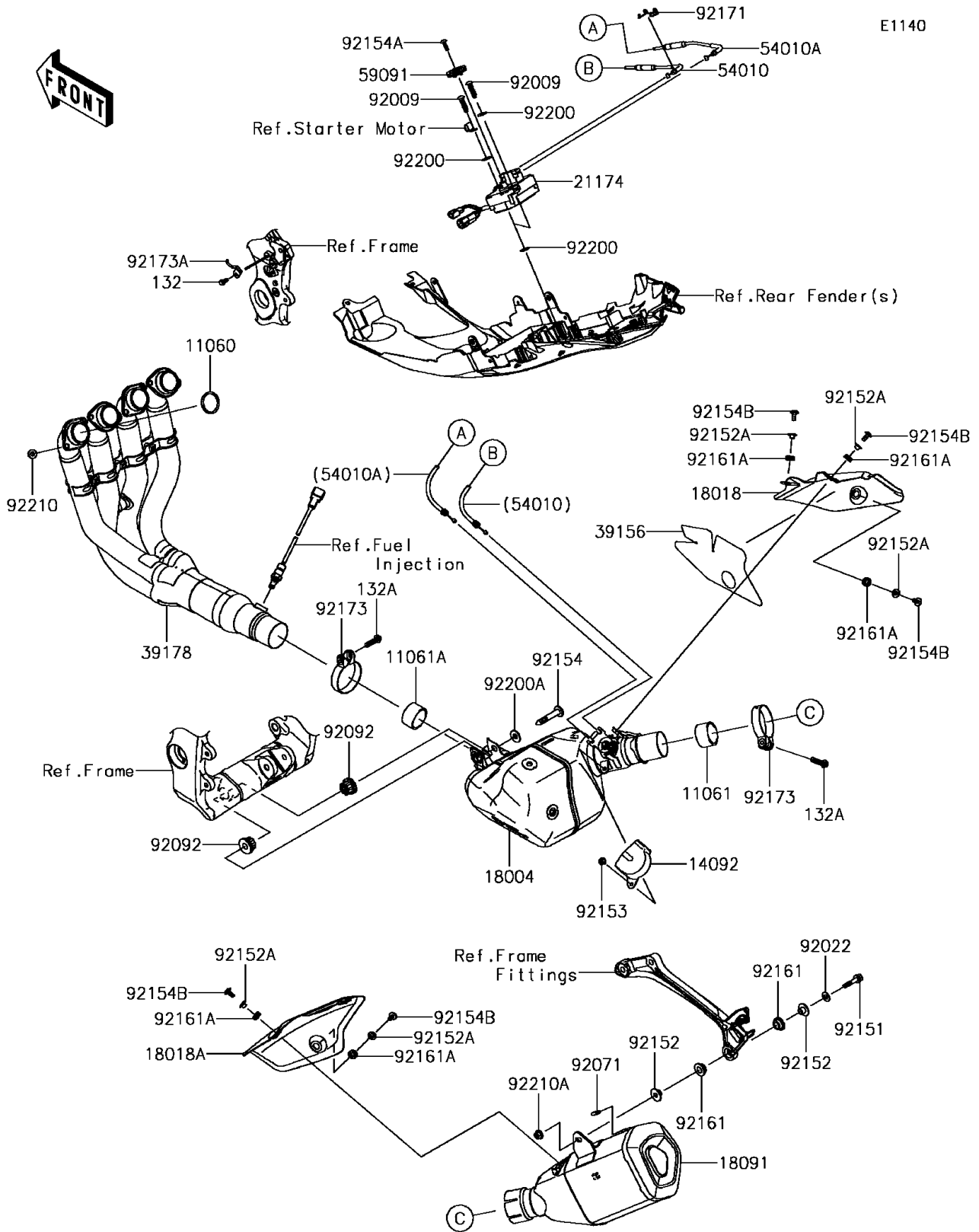


2017 Ninja ZX-10R ABS KRT Edition PARTS DIAGRAM

Muffler(s)



2017 Ninja ZX-10R ABS KRT Edition PARTS LIST

Muffler(s)

| ITEM NAME | PART NUMBER | QUANTITY |
|---|-------------|----------|
| BOLT-FLANGED-SMALL,6X12 (Ref # 132) | 132BA0612 | 1 |
| BOLT-FLANGED-SMALL,8X30 (Ref # 132A) | 132BC0830 | 2 |
| GASKET,EXHAUST PIPE (Ref # 11060) | 11060-1203 | 4 |
| GASKET,50.8X62X30 (Ref # 11061) | 11061-0447 | 1 |
| GASKET,54X62X30 (Ref # 11061A) | 11061-0448 | 1 |
| COVER,PULLEY (Ref # 14092) | 14092-0705 | 1 |
| CHAMBER-PREMUFLER (Ref # 18004) | 18004-0022 | 1 |
| PLATE-HEAT GUARD,CHAMBER (Ref # 18018) | 18018-0600 | 1 |
| PLATE-HEAT GUARD,MUFFLER (Ref # 18018A) | 18018-0601 | 1 |
| BODY-COMP-MUFFLER (Ref # 18091) | 18091-0970 | 1 |
| MOTOR-ELECTRIC (Ref # 21174) | 21174-0009 | 1 |
| PAD (Ref # 39156) | 39156-1937 | 1 |
| MANIFOLD-COMP-EXHAUST (Ref # 39178) | 39178-0248 | 1 |
| CABLE,OPEN (Ref # 54010) | 54010-0610 | 1 |
| CABLE,CLOSE (Ref # 54010A) | 54010-0611 | 1 |
| PULLEY (Ref # 59091) | 59091-0007 | 1 |
| SCREW,TAPPING,6X30 (Ref # 92009) | 92009-1481 | 2 |
| WASHER,8.5X19X1.2 (Ref # 92022) | 92022-3730 | 1 |
| GROMMET (Ref # 92071) | 92071-1270 | 1 |
| BUSHING-RUBBER,MUFFLER (Ref # 92092) | 92092-1087 | 2 |
| BOLT,FLANGED,8X40 (Ref # 92151) | 92151-1532 | 1 |
| COLLAR (Ref # 92152) | 92152-0188 | 2 |
| COLLAR,6.3X8.3X16 (Ref # 92152A) | 92152-2180 | 5 |
| BOLT,SOCKET,6X10 (Ref # 92153) | 92153-1527 | 1 |
| BOLT,SOCKET,10X61 (Ref # 92154) | 92154-0125 | 1 |
| BOLT,TORX,5X18 (Ref # 92154A) | 92154-0217 | 1 |
| BOLT,SOCKET,6X14 (Ref # 92154B) | 92154-0907 | 5 |
| DAMPER (Ref # 92161) | 92161-0135 | 2 |
| DAMPER (Ref # 92161A) | 92161-0308 | 5 |

2017 Ninja ZX-10R ABS KRT Edition PARTS LIST

Muffler(s)

| ITEM NAME | PART NUMBER | QUANTITY |
|-----------------------------------|-------------|----------|
| CLAMP (Ref # 92171) | 92171-0292 | 1 |
| CLAMP,64.5MM (Ref # 92173) | 92173-0284 | 2 |
| CLAMP (Ref # 92173A) | 92173-1528 | 1 |
| WASHER (Ref # 92200) | 92200-0078 | 4 |
| WASHER,10.5X25X2.0 (Ref # 92200A) | 92200-1377 | 1 |
| NUT,8MM (Ref # 92210) | 92210-0076 | 8 |
| NUT,8MM (Ref # 92210A) | 92210-0121 | 1 |