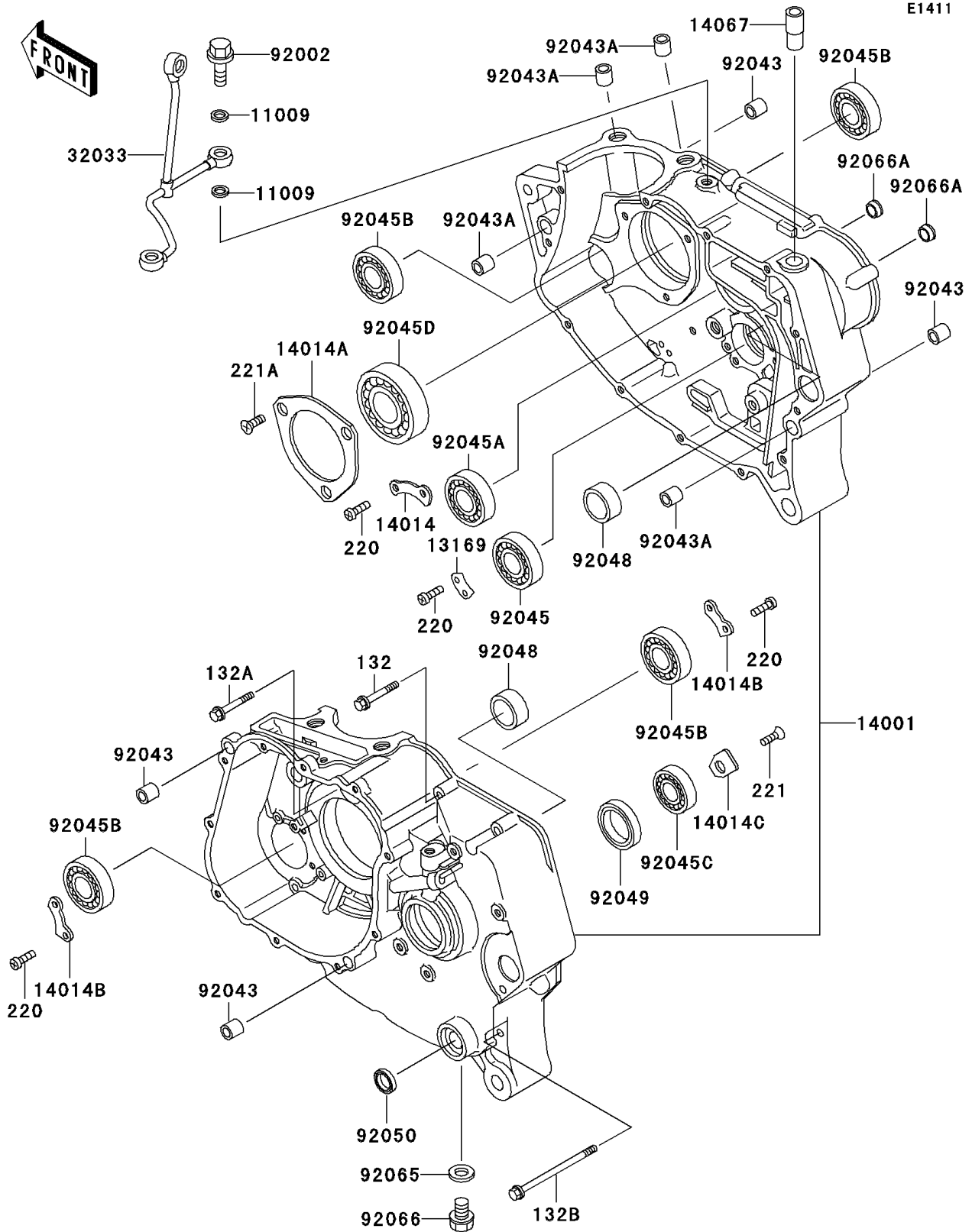


# 1998 KLR250 PARTS DIAGRAM

Crankcase



# 1998 KLR250 PARTS LIST

## Crankcase

| ITEM NAME                                   | PART NUMBER | QUANTITY |
|---|-------------|----------|
| BOLT-FLANGED-SMALL,6X40 (Ref # 132)         | 132J0640    | 10       |
| BOLT-FLANGED-SMALL (Ref # 132A)             | 132J0650    | 1        |
| BOLT-FLANGED-SMALL (Ref # 132B)             | 132J0670    | 3        |
| SCREW-PAN-CROS,6X12 (Ref # 220)             | 220B0612    | 8        |
| SCREW-CSK-CROS,6X12 (Ref # 221)             | 221B0612    | 1        |
| SCREW-CSK-CROS,6X16 (Ref # 221A)            | 221B0616    | 3        |
| GASKET,10X14.5X1.5 (Ref # 11009)            | 11009-1105  | 4        |
| PLATE,GEAR CHANGE DRUM (Ref # 13169)        | 13169-014   | 1        |
| SET-CRANKCASE (Ref # 14001)                 | 14001-5180  | 1        |
| PLATE-POSITION,CHANGE DRUM (Ref # 14014)    | 14014-037   | 1        |
| PLATE-POSITION,CRANK BEARING (Ref # 14014A) | 14014-1004  | 1        |
| PLATE-POSITION (Ref # 14014B)               | 14014-1014  | 2        |
| PLATE-POSITION (Ref # 14014C)               | 14014-1057  | 1        |
| FITTING,BREATHER (Ref # 14067)              | 14067-006   | 1        |
| PIPE (Ref # 32033)                          | 32033-1427  | 1        |
| BOLT,BANJO,10X25 (Ref # 92002)              | 92002-1170  | 2        |
| PIN,6.2X8X14 (Ref # 92043)                  | 92043-1263  | 4        |
| PIN,10.1X12X14 (Ref # 92043A)               | 92043-4009  | 4        |
| BEARING-BALL,#6905 (Ref # 92045)            | 92045-036   | 1        |
| BEARING-BALL,TMB204 JR (Ref # 92045A)       | 92045-1041  | 1        |
| BEARING-BALL,6004TMB (Ref # 92045B)         | 92045-1118  | 4        |
| BEARING-BALL,TM-SX0597LU (Ref # 92045C)     | 92045-1127  | 1        |
| BEARING-BALL (Ref # 92045D)                 | 92045-1172  | 1        |
| RACE,26X33X13 (Ref # 92048)                 | 92048-1057  | 2        |
| SEAL-OIL,TC32457 (Ref # 92049)              | 92049-1159  | 1        |
| SEAL-OIL (Ref # 92050)                      | 92050-082   | 1        |
| GASKET,12X22X2,DRAIN PLUG (Ref # 92065)     | 92065-097   | 1        |
| PLUG,OIL DRAIN,12X15 (Ref # 92066)          | 92066-1174  | 1        |
| PLUG (Ref # 92066A)                         | 92066-1282  | 2        |