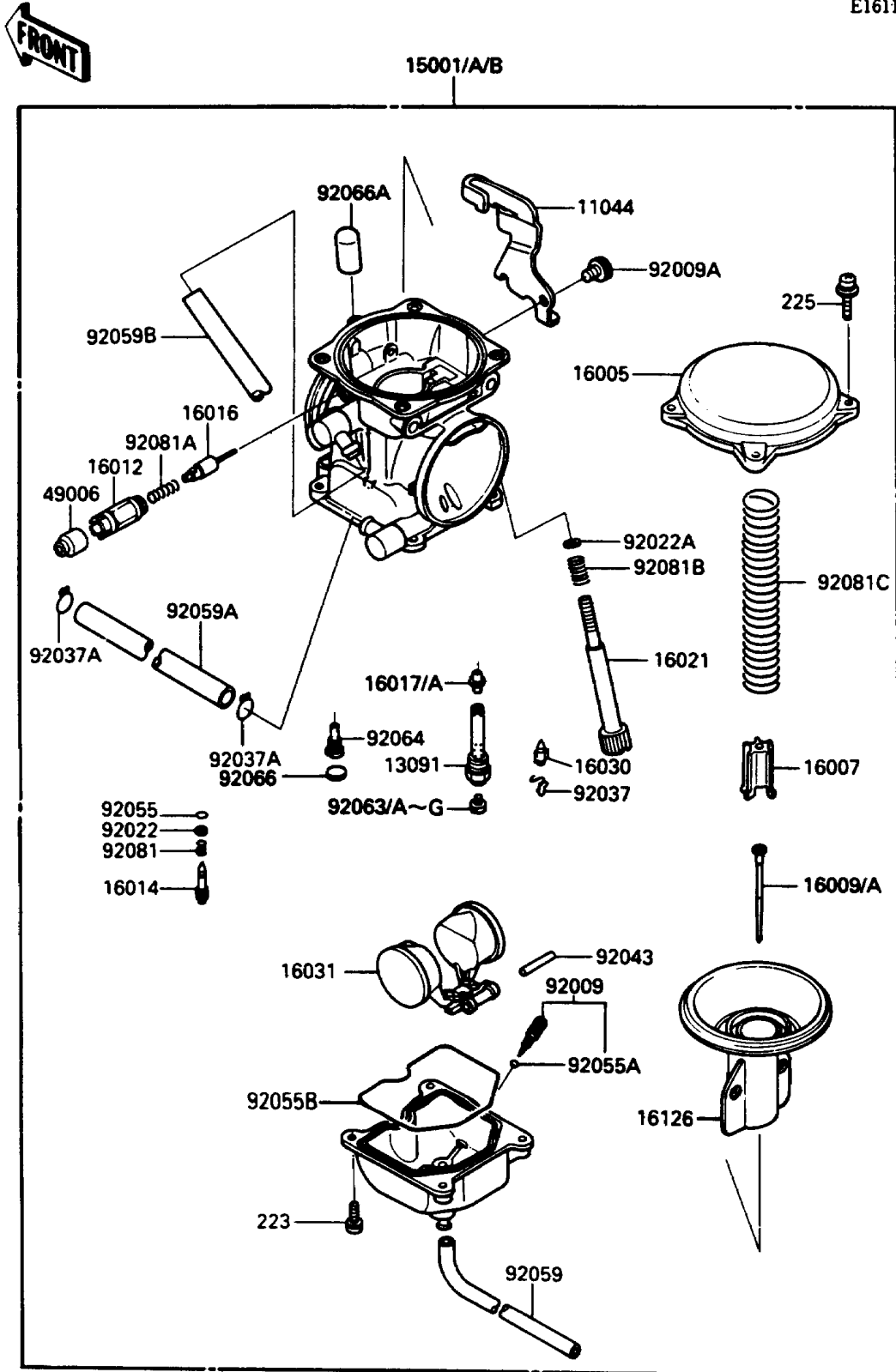


# 1988 KLR250 PARTS DIAGRAM

Carburetor

E1611-0187



# 1988 KLR250 PARTS LIST

## Carburetor

| ITEM NAME                                 | PART NUMBER | QUANTITY |
|---|-------------|----------|
| BRACKET,THROTTLE CABLE (Ref # 11044)      | 11044-1061  | 1        |
| HOLDER,NEEDLE JET (Ref # 13091)           | 13091-1259  | 1        |
| CARBURETOR-ASSY (Ref # 15001)             | 15001-1099  | 1        |
| CARBURETOR-ASSY (Ref # 15001A)            | 15001-1121  | 1        |
| CARBURETOR-ASSY (Ref # 15001B)            | 15001-1122  | 1        |
| TOP-CHAMBER,MIXING,27/60 (Ref # 16005)    | 16005-1057  | 1        |
| SEAT-SPRING,VALVE (Ref # 16007)           | 16007-1117  | 1        |
| NEEDLE-JET,N31A (Ref # 16009)             | 16009-1253  | 1        |
| NEEDLE-JET,N31C (Ref # 16009A)            | 16009-1255  | 1        |
| CAP-STARTER PLUNGER (Ref # 16012)         | 16012-1055  | 1        |
| SCREW-PILOT AIR (Ref # 16014)             | 16014-1029  | 1        |
| PLUNGER,STARTER (Ref # 16016)             | 16016-1065  | 1        |
| JET-NEEDLE (Ref # 16017)                  | 16017-1265  | 1        |
| JET-NEEDLE,#6 (Ref # 16017A)              | 16017-1266  | 1        |
| SCREW-THROTTLE STOP (Ref # 16021)         | 16021-1109  | 1        |
| VALVE-FLOAT (Ref # 16030)                 | 16030-1007  | 1        |
| FLOAT (Ref # 16031)                       | 16031-1056  | 1        |
| VALVE,VACUUM (Ref # 16126)                | 16126-1163  | 1        |
| BOOT,STARTER PLUNGER (Ref # 49006)        | 49006-1165  | 1        |
| SCREW,DRAIN,M6X1.0 (Ref # 92009)          | 92009-1095  | 1        |
| SCREW,5X10 (Ref # 92009A)                 | 92009-1365  | 1        |
| WASHER,PLAIN (Ref # 92022)                | 92022-1003  | 1        |
| WASHER,THROTTLE STOP SCREW (Ref # 92022A) | 92022-1587  | 1        |
| CLAMP,FLOAT VALVE (Ref # 92037)           | 16044-007   | 1        |
| CLAMP,TUBE (Ref # 92037A)                 | 92037-1531  | 2        |
| PIN,FLOAT (Ref # 92043)                   | 92043-1207  | 1        |
| RING-O,PILOT ADJUST (Ref # 92055)         | 92055-1002  | 1        |
| RING-O,DRAIN SCREW (Ref # 92055A)         | 92055-1053  | 1        |
| RING-O,FLOAT CHAMBER (Ref # 92055B)       | 92055-1222  | 1        |

# 1988 KLR250 PARTS LIST

## Carburetor

| ITEM NAME                                 | PART NUMBER | QUANTITY |
|---|-------------|----------|
| TUBE,3.5X6.5X330 (Ref # 92059)            | 92059-111   | 1        |
| TUBE,6.5X11.5X200 (Ref # 92059A)          | 92059-1538  | 1        |
| TUBE,6.5X9.5X410 (Ref # 92059B)           | 92059-1539  | 1        |
| JET-MAIN,2ND,#125 (Ref # 92063)           | 92063-1069  | 1        |
| JET-MAIN,#118 (Ref # 92063A)              | 92063-1071  | 1        |
| JET-MAIN,#118 (Ref # 92063B)              | 92063-1071  | 1        |
| JET-MAIN,#120 (Ref # 92063C)              | 92063-1072  | 1        |
| JET-MAIN,#120 (Ref # 92063D)              | 92063-1072  | 1        |
| JET-MAIN,2ND,#122 (Ref # 92063E)          | 92063-1073  | 1        |
| JET-MAIN,#112 (Ref # 92063F)              | 92063-1117  | 1        |
| JET-MAIN,#115 (Ref # 92063G)              | 92063-1118  | 1        |
| JET-PILOT,#35 (Ref # 92064)               | 92064-1101  | 1        |
| PLUG,PILOT AIR SCREW,6.9X2 (Ref # 92066)  | 92066-1051  | 1        |
| PLUG,12X25 (Ref # 92066A)                 | 92068-006   | 1        |
| SPRING,PILOT ADJUST SCREW (Ref # 92081)   | 92081-1002  | 1        |
| SPRING,PLUNGER (Ref # 92081A)             | 92081-1720  | 1        |
| SPRING,THROTTLE STOP SCREW (Ref # 92081B) | 92081-1721  | 1        |
| SPRING,VACUUM VALVE (Ref # 92081C)        | 92081-1826  | 1        |
| SCREW-PAN-WS-CROS (Ref # 223)             | 223C0416    | 4        |
| SCREW-PAN-WSP-CROS (Ref # 225)            | 225C0418    | 4        |