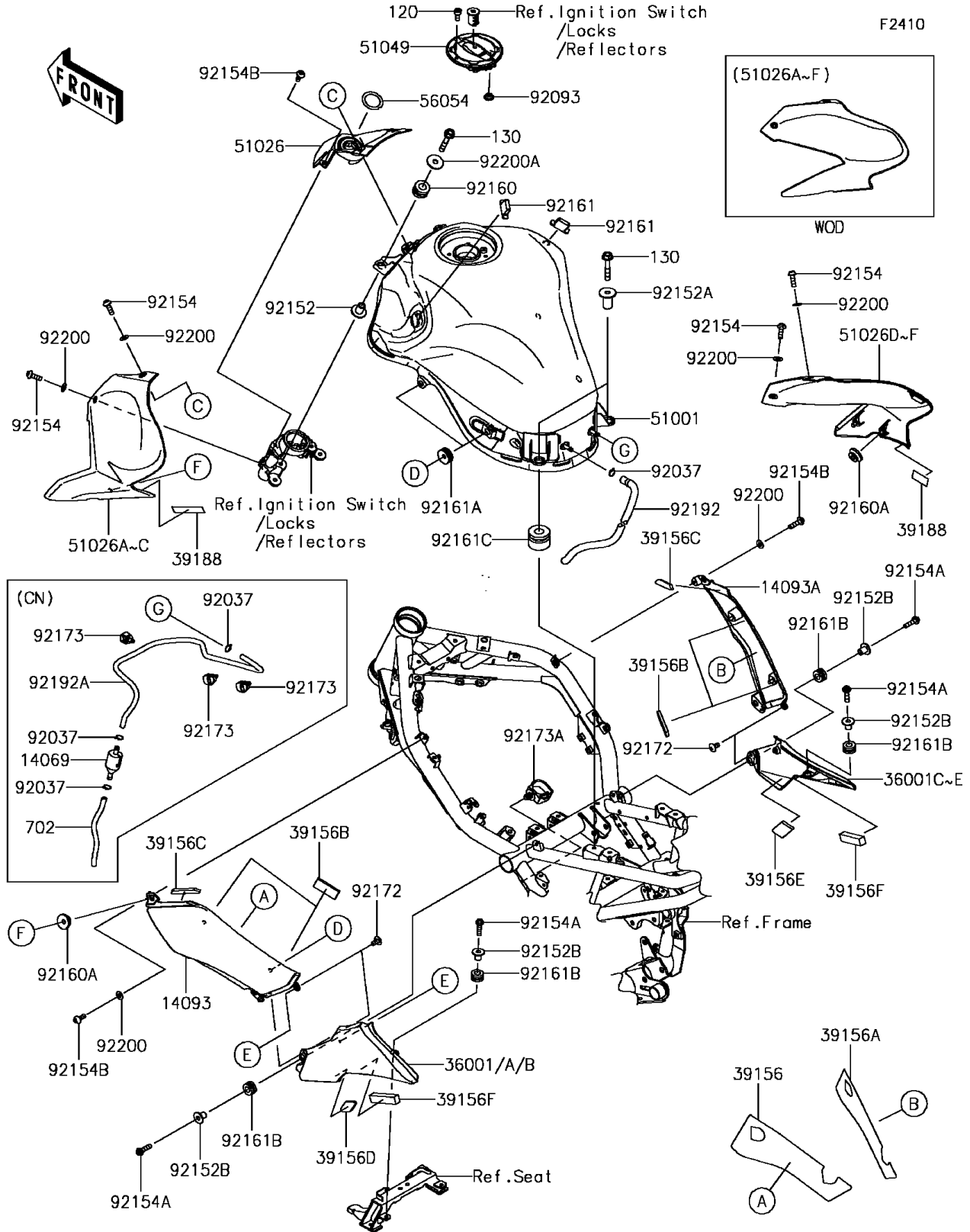


2017 Z900 ABS PARTS DIAGRAM

Fuel Tank



2017 Z900 ABS PARTS LIST

Fuel Tank

ITEM NAME	PART NUMBER	QUANTITY
COVER,KNEE GRIP,LH (Ref # 14093)	14093-0667	1
COVER,KNEE GRIP,RH (Ref # 14093A)	14093-0668	1
COVER-SIDE,SEAT,LH,P.M.GRAY (Ref # 36001)	36001-0658-36P	1
COVER-SIDE,SEAT,LH,M.S.BLACK (Ref # 36001B)	36001-0658-660	1
COVER-SIDE,SEAT,RH,P.M.GRAY (Ref # 36001C)	36001-0659-36P	1
COVER-SIDE,SEAT,RH,M.S.BLACK (Ref # 36001E)	36001-0659-660	1
PAD,KNEE GRIP COVER,LH (Ref # 39156)	39156-2147	1
PAD,KNEE GRIP COVER,RH (Ref # 39156A)	39156-2148	1
PAD,20X50X5 (Ref # 39156B)	39156-2191	4
PAD,10X76X5 (Ref # 39156C)	39156-2192	2
PAD,20X20X5 (Ref # 39156D)	39156-2194	1
PAD,25X50X5 (Ref # 39156E)	39156-2195	1
PAD,15X66X10 (Ref # 39156F)	39156-2215	2
TAPE,8X35 (Ref # 39188)	39188-0564	2
TANK-COMP-FUEL,M.S.BLACK (Ref # 51001)	51001-0853-660	1
COVER TANK,CNT (Ref # 51026)	51026-0013	1
COVER TANK,LH,P.M.GRAY (Ref # 51026A)	51026-0014-36P	1
COVER TANK,LH,M.F.S.BLACK (Ref # 51026C)	51026-0014-739	1
COVER TANK,RH,P.M.GRAY (Ref # 51026D)	51026-0015-36P	1
COVER TANK,RH,M.F.S.BLACK (Ref # 51026F)	51026-0015-739	1
CAP-TANK (Ref # 51049)	51049-0735	1
MARK,IG. SWITCH (Ref # 56054)	56054-1822	1
SEAL,FUEL TANK CAP (Ref # 92093)	92093-1030	1
COLLAR,6.3X9.5X14.1 (Ref # 92152)	92152-1847	2
COLLAR,6.3X12X22.6 (Ref # 92152A)	92152-2252	2
COLLAR,5.6X8X11.2 (Ref # 92152B)	92152-2342	4
BOLT,SOCKET,5X16 (Ref # 92154)	92154-0209	4
BOLT-SOCKET,5X12 (Ref # 120)	120CA0512	4
BOLT-FLANGED,6X35 (Ref # 130)	130BA0635	4

2017 Z900 ABS PARTS LIST

Fuel Tank

ITEM NAME	PART NUMBER	QUANTITY
BOLT,SOCKET,5X20 (Ref # 92154A)	92154-0210	4
BOLT,SOCKET,5X12 (Ref # 92154B)	92154-1421	4
DAMPER,10X20X12 (Ref # 92160)	92160-1167	2
DAMPER (Ref # 92160A)	92160-1613	2
DAMPER (Ref # 92161)	92161-0365	2
DAMPER (Ref # 92161A)	92161-0588	4
DAMPER,8X16X8.6 (Ref # 92161B)	92161-0685	4
DAMPER,12X28X21 (Ref # 92161C)	92161-1468	2
SCREW,5X10 (Ref # 92172)	92172-0864	4
CLAMP (Ref # 92173A)	92173-0861	1
TUBE,6X9X670/30 (Ref # 92192)	92192-1688	1
WASHER,NYLONE,5.3X11.5X0.5 (Ref # 92200)	92200-0006	6
WASHER,6.5X22X1.6 (Ref # 92200A)	92200-1087	2
BREATHER,TANK (Ref # 14069)	14069-0008	1
COVER-SIDE,SEAT,LH,C.L.GREEN (Ref # 36001A)	36001-0658-51P	1
COVER-SIDE,SEAT,RH,C.L.GREEN (Ref # 36001D)	36001-0659-51P	1
COVER TANK,LH,C.L.GREEN (Ref # 51026B)	51026-0014-51P	1
COVER TANK,RH,C.L.GREEN (Ref # 51026E)	51026-0015-51P	1
CLAMP,TUBE (Ref # 92037)	92037-010	1
CLAMP,TUBE (Ref # 92037)	92037-010	4
TUBE-RUBBER,6X9X300 (Ref # 702)	702A06300	1
CLAMP,12MM DIA. (Ref # 92173)	92173-0736	3
TUBE,6X9X670/30,BLUE (Ref # 92192A)	92192-1734	1