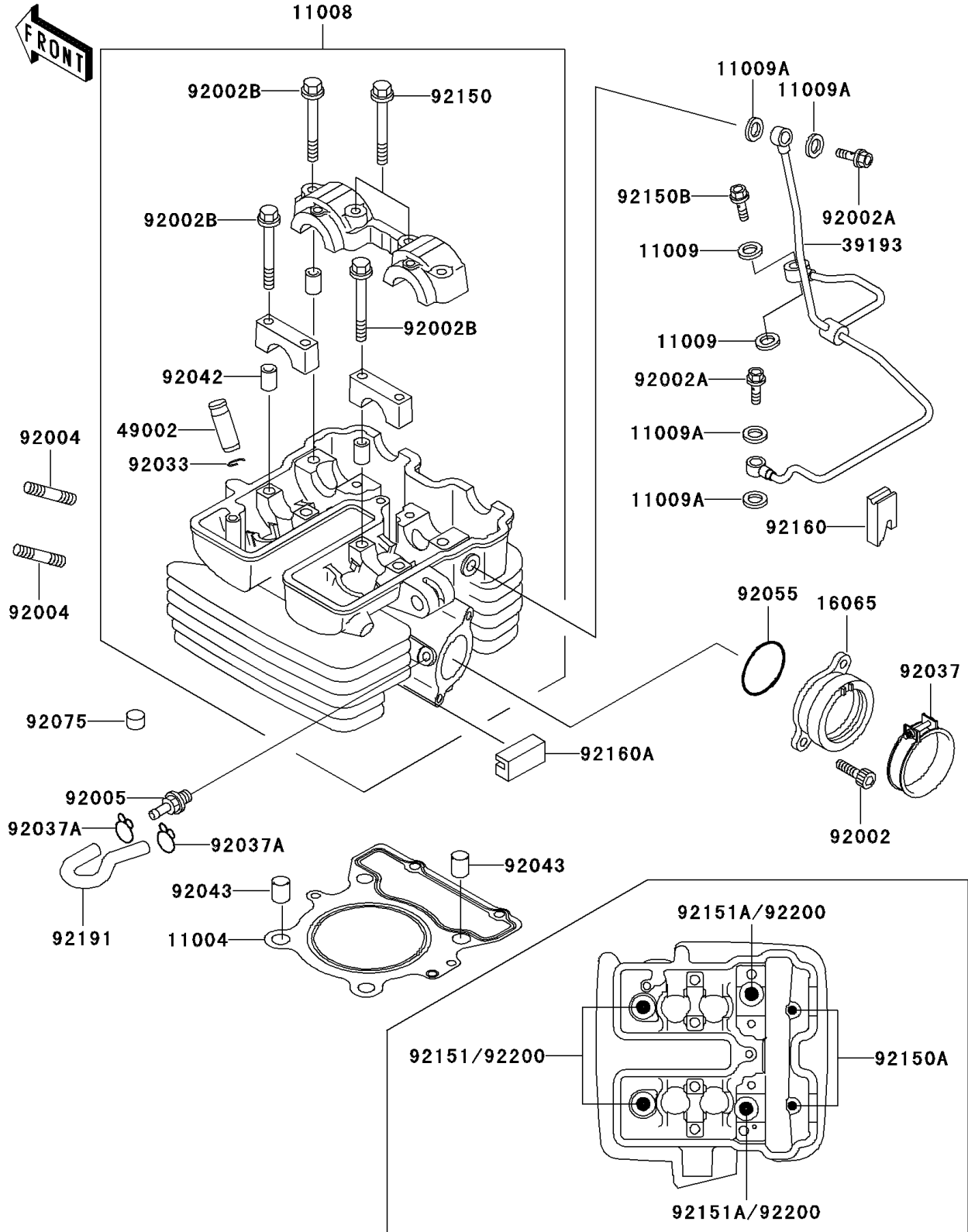


2003 Super Sherpa PARTS DIAGRAM

Cylinder Head

E1111



2003 Super Sherpa PARTS LIST

Cylinder Head

| ITEM NAME | PART NUMBER | QUANTITY |
|----------------------------------|-------------|----------|
| GASKET-HEAD (Ref # 11004) | 11004-1328 | 1 |
| HEAD-COMP-CYLINDER (Ref # 11008) | 11008-1340 | 1 |
| GASKET,10X14.5X1.5 (Ref # 11009) | 11009-1105 | 2 |
| GASKET,8.2X14X1.0 (Ref # 11009A) | 11009-1344 | 4 |
| HOLDER-CARBURETOR (Ref # 16065) | 16065-1342 | 1 |
| PIPE-OIL (Ref # 39193) | 39193-1032 | 1 |
| GUIDE-VALVE (Ref # 49002) | 49002-1126 | AR |
| BOLT,6X16 (Ref # 92002) | 92002-1143 | 2 |
| BOLT,BANJO,8X20 (Ref # 92002A) | 92002-1618 | 2 |
| BOLT,6X40 (Ref # 92002B) | 92002-1756 | 6 |
| STUD,8X22 (Ref # 92004) | 92004-1217 | 2 |
| FITTING (Ref # 92005) | 92005-1337 | 1 |
| RING-SNAP (Ref # 92033) | 92033-1247 | 4 |
| CLAMP,ID=53,BLACK (Ref # 92037) | 92037-1304 | 1 |
| CLAMP (Ref # 92037A) | 92037-1610 | 2 |
| PIN,DOWEL,6.3X8X14 (Ref # 92042) | 92042-007 | 6 |
| PIN,10.1X12X14 (Ref # 92043) | 92043-4009 | 2 |
| RING-O (Ref # 92055) | 92055-520 | 1 |
| DAMPER (Ref # 92075) | 92075-182 | 20 |
| BOLT,6X35 (Ref # 92150) | 92150-1083 | 2 |
| BOLT,6X135 (Ref # 92150A) | 92150-1552 | 2 |
| BOLT,BANJO,10X23 (Ref # 92150B) | 92150-1641 | 1 |
| BOLT,10X158 (Ref # 92151) | 92151-1152 | 2 |
| BOLT (Ref # 92151A) | 92151-1263 | 2 |
| DAMPER (Ref # 92160) | 92160-1816 | 1 |
| DAMPER (Ref # 92160A) | 92160-1879 | 1 |
| TUBE (Ref # 92191) | 92191-1158 | 1 |
| WASHER,10.5X19X2.3 (Ref # 92200) | 92200-1339 | 4 |