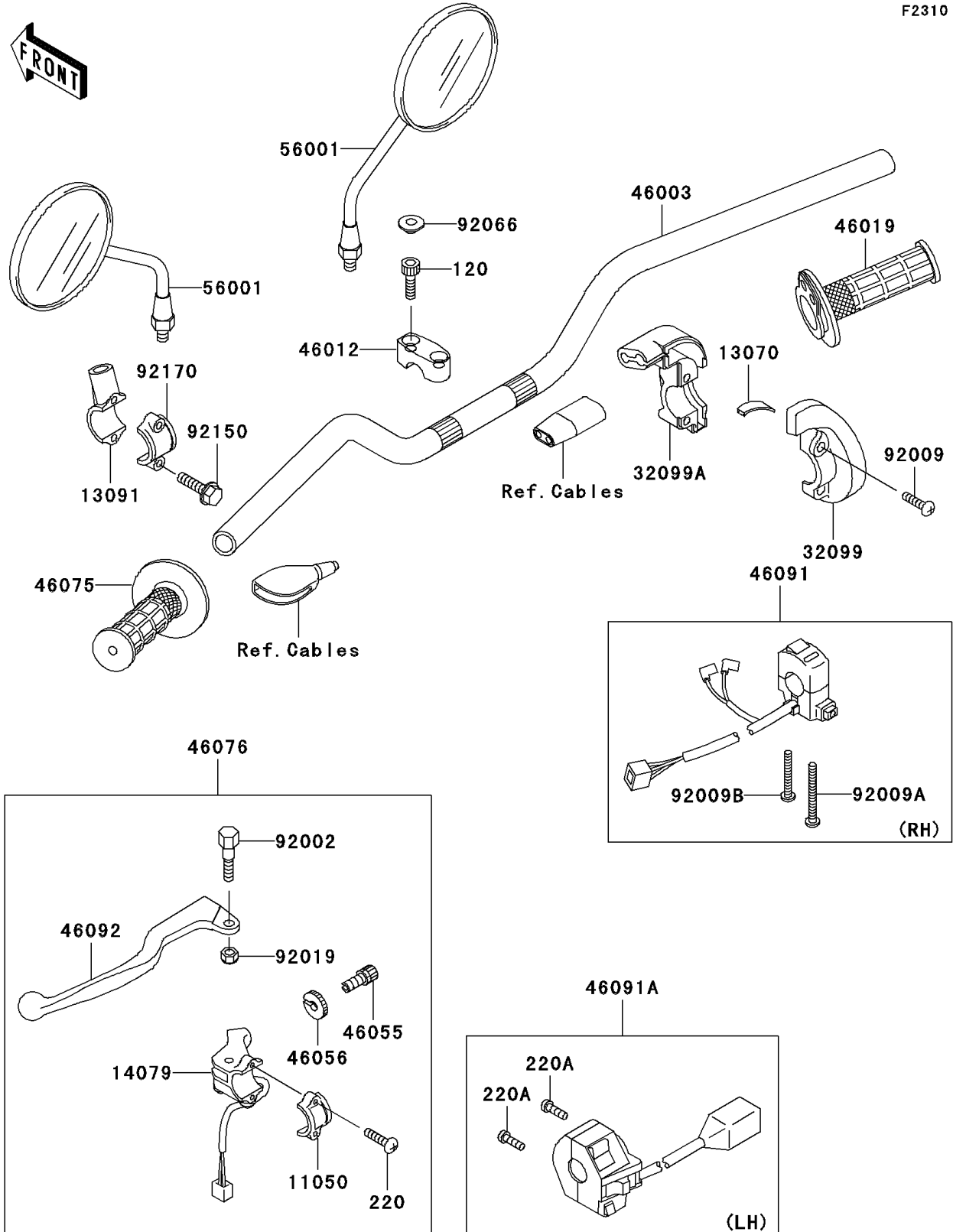


2004 Super Sherpa (Canada Only) PARTS DIAGRAM

Handlebar

F2310



2004 Super Sherpa (Canada Only) PARTS LIST

Handlebar

ITEM NAME	PART NUMBER	QUANTITY
BOLT-SOCKET,8X30,BLACK (Ref # 120)	120S0830	4
SCREW-PAN-CROS (Ref # 220)	220B0514	2
SCREW-PAN-CROS (Ref # 220A)	220C0530	2
BRACKET,LEVER HOLDER (Ref # 11050)	11050-1310	1
GUIDE,THROTTLE CABLE (Ref # 13070)	13070-1274	1
HOLDER,MIRROR (Ref # 13091)	13091-1995	1
HOLDER-ASSY,CLUTCH CABLE (Ref # 14079)	14079-1122	1
CASE,THROTTLE,UPP (Ref # 32099)	32099-1146	1
CASE,THROTTLE,LWR (Ref # 32099A)	32099-1186	1
HANDLE (Ref # 46003)	46003-1465	1
HOLDER-HANDLE,UPP (Ref # 46012)	46012-1276	2
GRIP-ASSY,THROTTLE (Ref # 46019)	46019-1093	1
SCREW,CABLE ADJUST,8MM (Ref # 46055)	46055-009	1
NUT,CABLE ADJUST (Ref # 46056)	46056-006	1
GRIP,LH (Ref # 46075)	46075-1149	1
LEVER-ASSY-GRIP,CLUTCH (Ref # 46076)	46076-1211	1
HOUSING-ASSY-CONTROL,RH (Ref # 46091)	46091-1678	1
HOUSING-ASSY-CONTROL,LH (Ref # 46091A)	46091-1690	1
LEVER-GRIP,CLUTCH (Ref # 46092)	46092-1159	1
MIRROR-ASSY (Ref # 56001)	56001-1339	2
BOLT,LEVER SET (Ref # 92002)	92002-1150	1
SCREW,5X16 (Ref # 92009)	92009-1699	2
SCREW,4X45 (Ref # 92009A)	92009-1803	1
SCREW,4X32 (Ref # 92009B)	92009-1804	1
NUT,LOCK,6MM (Ref # 92019)	92019-008	1
PLUG (Ref # 92066)	92066-1277	4
BOLT (Ref # 92150)	92150-1474	2
CLAMP,LEVER HOLDER (Ref # 92170)	92170-1226	1