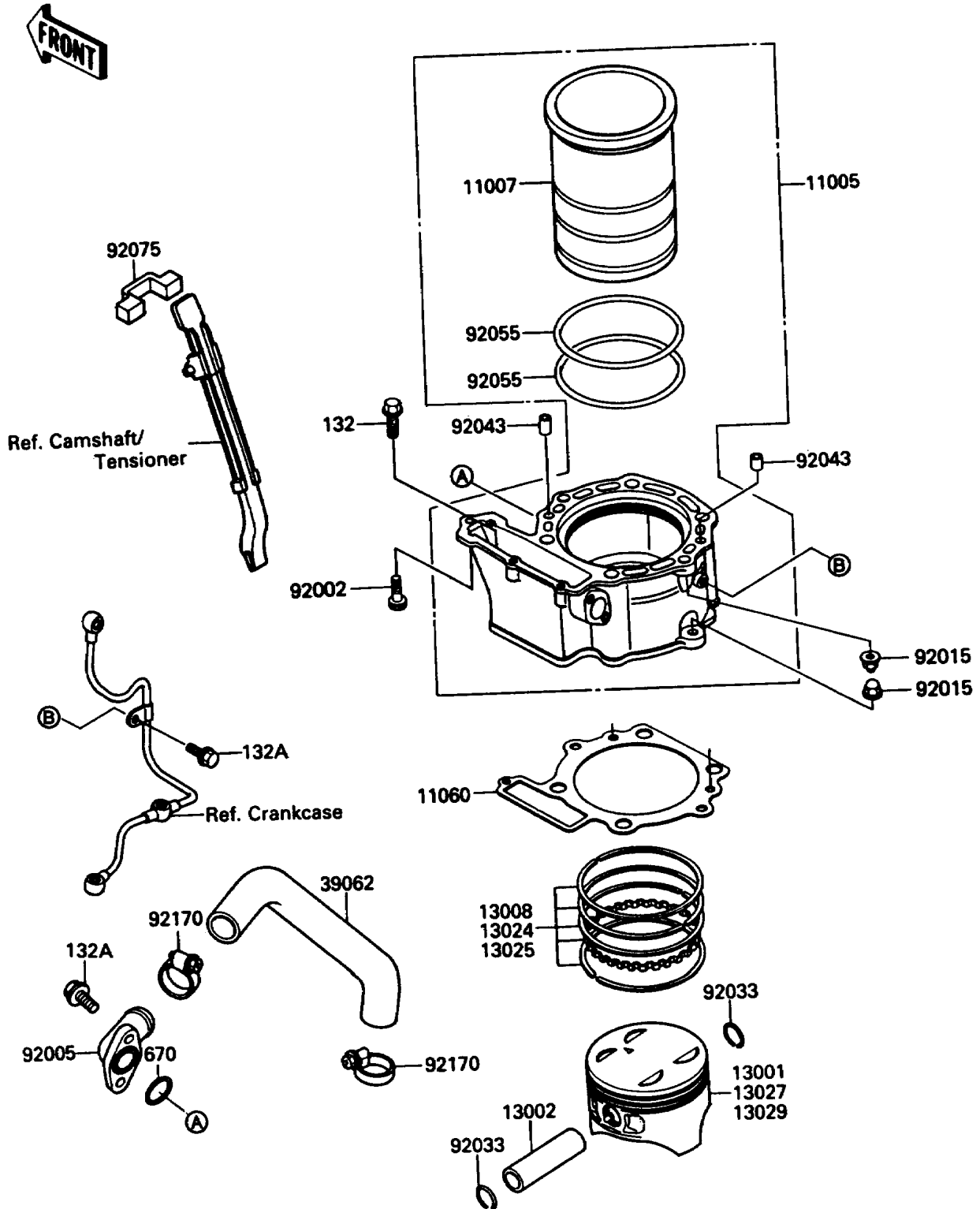


1990 KLR650 PARTS DIAGRAM

Cylinder/Piston

E1120



1990 KLR650 PARTS LIST

Cylinder/Piston

| ITEM NAME | PART NUMBER | QUANTITY |
|---|-------------|----------|
| CYLINDER-ENGINE (Ref # 11005) | 11005-1511 | 1 |
| LINER-CYLINDER (Ref # 11007) | 11007-1093 | 1 |
| GASKET,CYLINDER BASE (Ref # 11060) | 11060-1110 | 1 |
| PISTON-ENGINE,STD (Ref # 13001) | 13001-1284 | 1 |
| PIN-PISTON (Ref # 13002) | 13002-1069 | 1 |
| RING-SET-PISTON,STD (Ref # 13008) | 13008-1081 | 1 |
| RING-SET-PISTON LL,O/S 1.00 (Ref # 13024) | 13024-1071 | 1 |
| RING-SET-PISTON L,O/S 0.50 (Ref # 13025) | 13025-1078 | 1 |
| PISTON-ENGINE LL,O/S 1.00 (Ref # 13027) | 13027-1153 | 1 |
| PISTON-ENGINE L,O/S 0.50 (Ref # 13029) | 13029-1176 | 1 |
| HOSE-COOLING,PUMP-CYLINDER (Ref # 39062) | 39062-1216 | 1 |
| BOLT,SOCKET,8X35 (Ref # 92002) | 92002-1409 | 1 |
| FITTING (Ref # 92005) | 92005-1122 | 1 |
| NUT,CAP,8MM,BLACK (Ref # 92015) | 92015-1174 | 4 |
| RING-SNAP (Ref # 92033) | 92033-1226 | 2 |
| PIN,6.2X8X14 (Ref # 92043) | 92043-1263 | 2 |
| RING-O (Ref # 92055) | 92055-1368 | 2 |
| DAMPER (Ref # 92075) | 92075-1968 | 1 |
| CLAMP,COOLING HOSE (Ref # 92170) | 92170-1033 | 2 |
| BOLT-FLANGED-SMALL (Ref # 132) | 132G0625 | 1 |
| BOLT-FLANGED-SMALL (Ref # 132A) | 132J0612 | 3 |
| O RING,18MM (Ref # 670) | 670B2018 | 1 |