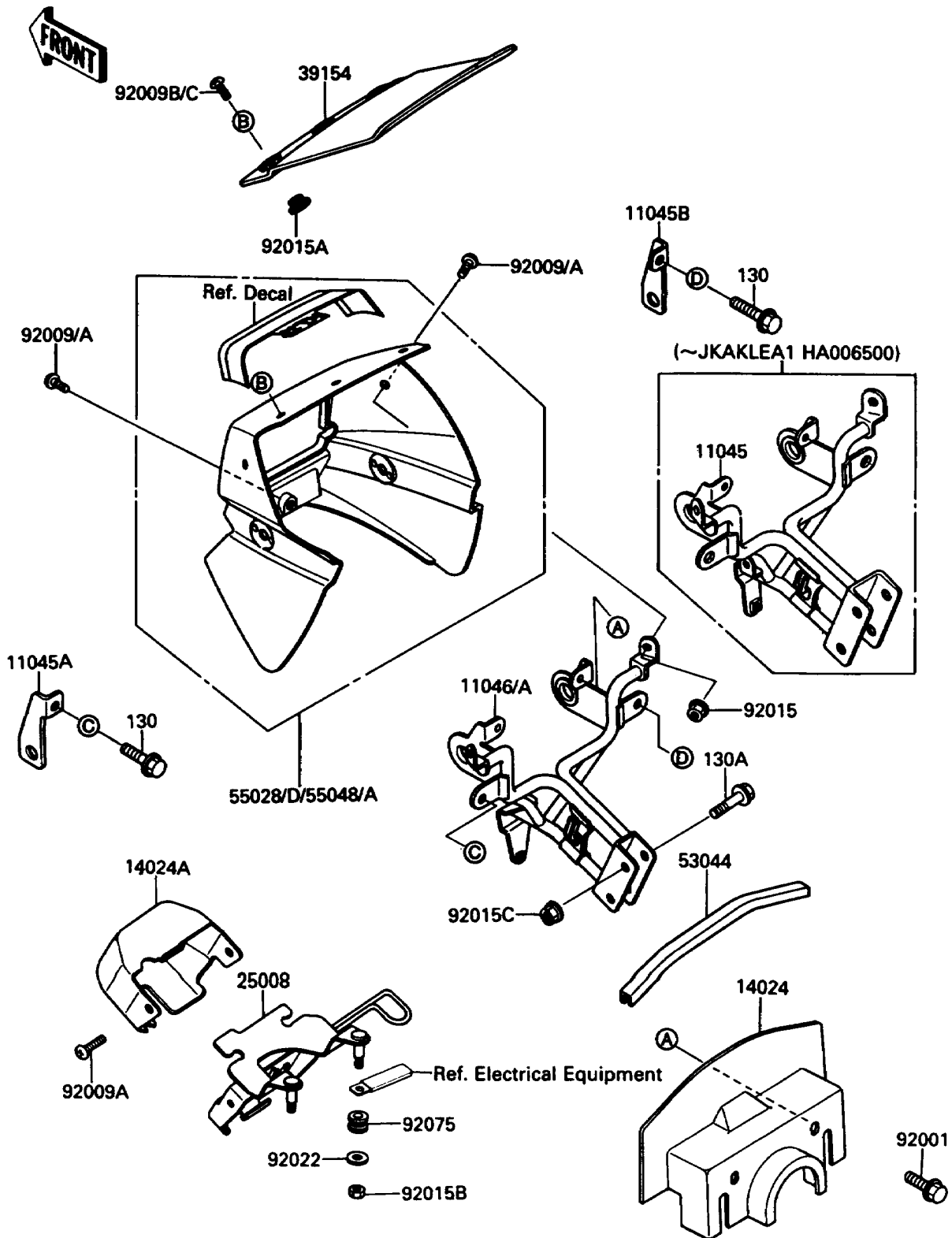


# 1988 KLR® 650 PARTS DIAGRAM

Cowling

F2871



# 1988 KLR® 650 PARTS LIST

## Cowling

ITEM NAME	PART NUMBER	QUANTITY
BRACKET,SIGNAL LAMP,LH (Ref # 11045A)	11045-1798	1
BRACKET,SIGNAL LAMP,RH (Ref # 11045B)	11045-1799	1
BRACKET,COWLING (Ref # 11046)	11046-1036	1
COVER,COWLING,INNER (Ref # 14024)	14024-1366	1
COVER,HARNESS COUPLER (Ref # 14024A)	14024-1471	1
BRACKET-METER (Ref # 25008)	25008-1137	1
WINDSHIELD (Ref # 39154)	39154-1065	1
TRIM,COWLING COVER (Ref # 53044)	53044-1106	1
COWLING,UPP,B.BLUE (Ref # 55028D)	55028-5401-6K	1
BOLT,6X14,BLACK (Ref # 92001)	92001-1847	2
SCREW,6X14,WHITE (Ref # 92009)	92009-1287	3
SCREW,6X14,BLACK (Ref # 92009A)	92009-1308	5
SCREW,5X14,WHITE (Ref # 92009B)	92009-1366	3
SCREW,5X14,BLACK (Ref # 92009C)	92009-1383	3
NUT,FLANGED,6MM (Ref # 92015)	92015-1193	2
NUT,5MM,COWLING (Ref # 92015A)	92015-1343	3
NUT,6MM (Ref # 92015B)	92015-1391	2
NUT,8MM (Ref # 92015C)	92015-1406	2
WASHER,6.5X20X1.6 (Ref # 92022)	92022-1557	2
DAMPER (Ref # 92075)	92075-024	2
BOLT-FLANGED,6X12 (Ref # 130)	130C0612	2
BOLT-FLANGED,8X25 (Ref # 130A)	130G0825	2