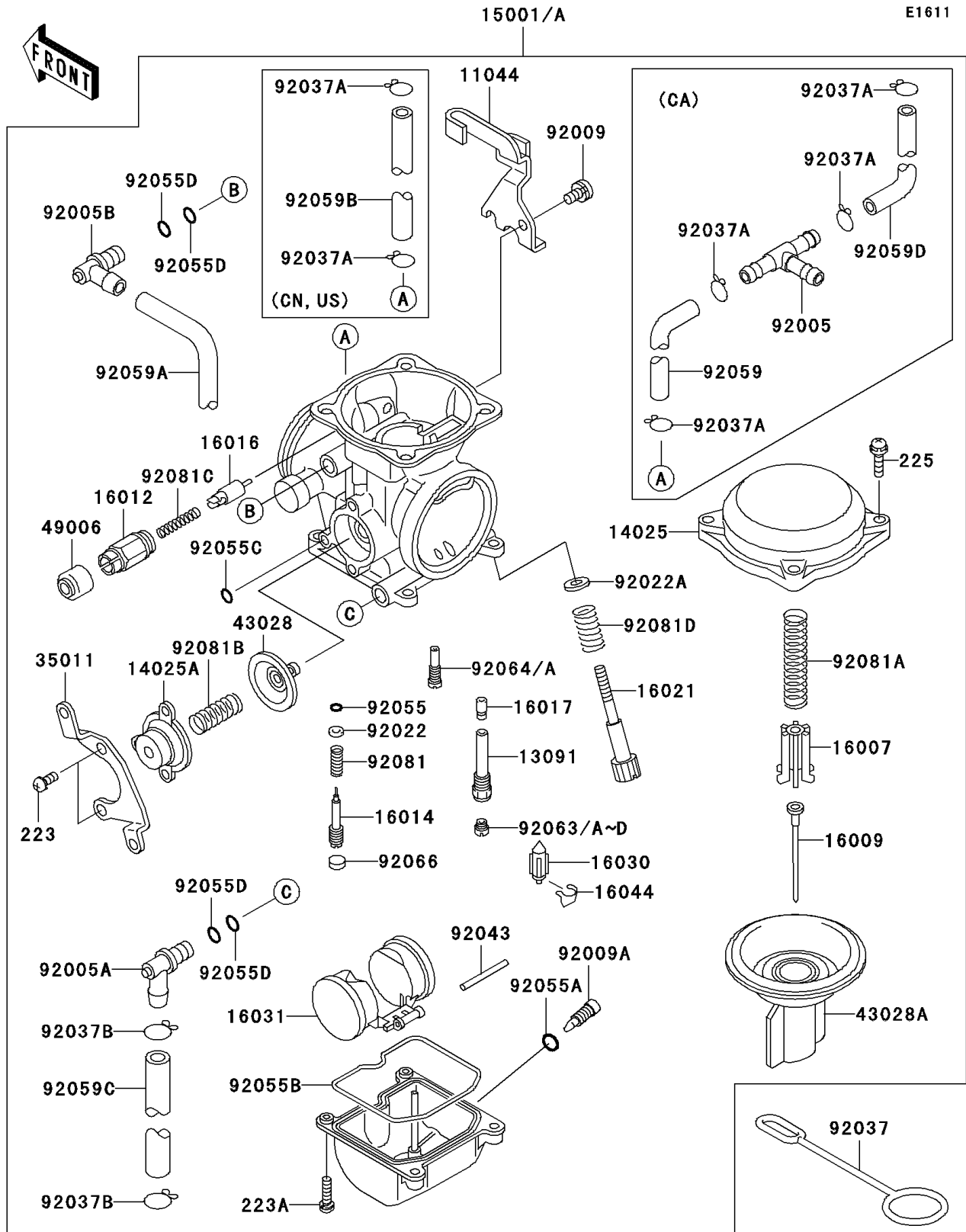


# 2001 KLR650 PARTS DIAGRAM

Carburetor



## 2001 KLR650 PARTS LIST

### Carburetor

ITEM NAME	PART NUMBER	QUANTITY
BRACKET,THROTTLE CABLE (Ref # 11044)	11044-1353	1
HOLDER,NEEDLE JET (Ref # 13091)	13091-1425	1
COVER,MIXING CHAMBER (Ref # 14025)	14025-1890	1
COVER,AIR CUT VALVE (Ref # 14025A)	14025-1903	1
SEAT-SPRING,DIAPHRAGM VALVE (Ref # 16007)	16007-1113	1
NEEDLE-JET,N31R (Ref # 16009)	16009-1344	1
CAP-STARTER PLUNGER (Ref # 16012)	16012-1055	1
SCREW-PILOT AIR (Ref # 16014)	16014-1053	1
PLUNGER (Ref # 16016)	16016-1057	1
JET-NEEDLE,#6 (Ref # 16017)	16017-1254	1
SCREW-THROTTLE STOP (Ref # 16021)	16021-1109	1
VALVE-FLOAT (Ref # 16030)	16030-1057	1
FLOAT (Ref # 16031)	16031-1056	1
CLAMP,FLOAT VALVE (Ref # 16044)	16044-007	1
STAY,AIR CUT VALVE (Ref # 35011)	35011-1232	1
DIAPHRAGM,5.9MM,AIR CUT VALVE (Ref # 43028)	43028-1053	1
DIAPHRAGM,VALVE (Ref # 43028A)	43028-1062	1
BOOT,STARTER PLUNGER (Ref # 49006)	49006-1165	1
FITTING,L-TYPE (Ref # 92005A)	92005-1120	1
FITTING,L-TYPE (Ref # 92005B)	92005-1144	1
SCREW,5X10 (Ref # 92009)	92009-1365	1
SCREW,DRAIN,M6X0.75 (Ref # 92009A)	92009-1551	1
WASHER,PLAIN (Ref # 92022)	92022-1003	1
WASHER,THROTTLE STOP SCREW (Ref # 92022A)	92022-1587	1
CLAMP,OVERFLOW TUBE (Ref # 92037)	92037-134	1
CLAMP,TUBE (Ref # 92037B)	92037-1531	2
SCREW-PAN-WS-CROS (Ref # 223)	223C0410	2
SCREW-PAN-WS-CROS (Ref # 223A)	223C0416	4
SCREW-PAN-WSP-CROS (Ref # 225)	225C0418	4

## 2001 KLR650 PARTS LIST

### Carburetor

ITEM NAME	PART NUMBER	QUANTITY
PIN,FLOAT (Ref # 92043)	92043-1207	1
RING-O,PILOT ADJUST (Ref # 92055)	92055-1002	1
RING-O (Ref # 92055A)	92055-1053	1
RING-O,FLOAT CHAMBER (Ref # 92055B)	92055-1222	1
RING-O (Ref # 92055C)	92055-1245	1
RING-O (Ref # 92055D)	92055-1246	4
TUBE,6.5X9.5X430 (Ref # 92059A)	92059-1727	1
TUBE,6.5X11.5X170 (Ref # 92059C)	92059-1837	1
JET-MAIN,#142 (Ref # 92063)	92063-1016	1
JET-MAIN,#145 (Ref # 92063A)	92063-1017	1
JET-MAIN,#148 (Ref # 92063B)	92063-1324	1
JET-MAIN,#150 (Ref # 92063C)	92063-1330	1
JET-MAIN,#152 (Ref # 92063D)	92063-1331	1
JET-PILOT,#38 (Ref # 92064)	92064-1050	1
JET-PILOT,#40 (Ref # 92064A)	92064-1108	1
PLUG,PILOT AIR SCREW,6.9X2 (Ref # 92066)	92066-1051	1
SPRING,PILOT ADJUST SCREW (Ref # 92081)	92081-1002	1
SPRING,DIAPHRAGM VALVE (Ref # 92081A)	92081-1718	1
SPRING,AIR CUT VALVE (Ref # 92081B)	92081-1719	1
SPRING,PLUNGER (Ref # 92081C)	92081-1720	1
SPRING,THROTTLE STOP SCREW (Ref # 92081D)	92081-1721	1
CARBURETOR-ASSY (Ref # 15001)	15001-1327	1
CARBURETOR-ASSY (Ref # 15001A)	15001-1368	1
FITTING,FUEL,T-TYPE (Ref # 92005)	92005-1112	1
CLAMP,TUBE (Ref # 92037A)	92037-1477	2
CLAMP,TUBE (Ref # 92037A)	92037-1477	4
TUBE,5X9X120 (Ref # 92059)	92059-1713	1
TUBE,5X9X220 (Ref # 92059B)	92059-1836	1
TUBE,5X9X100 (Ref # 92059D)	92059-1839	1