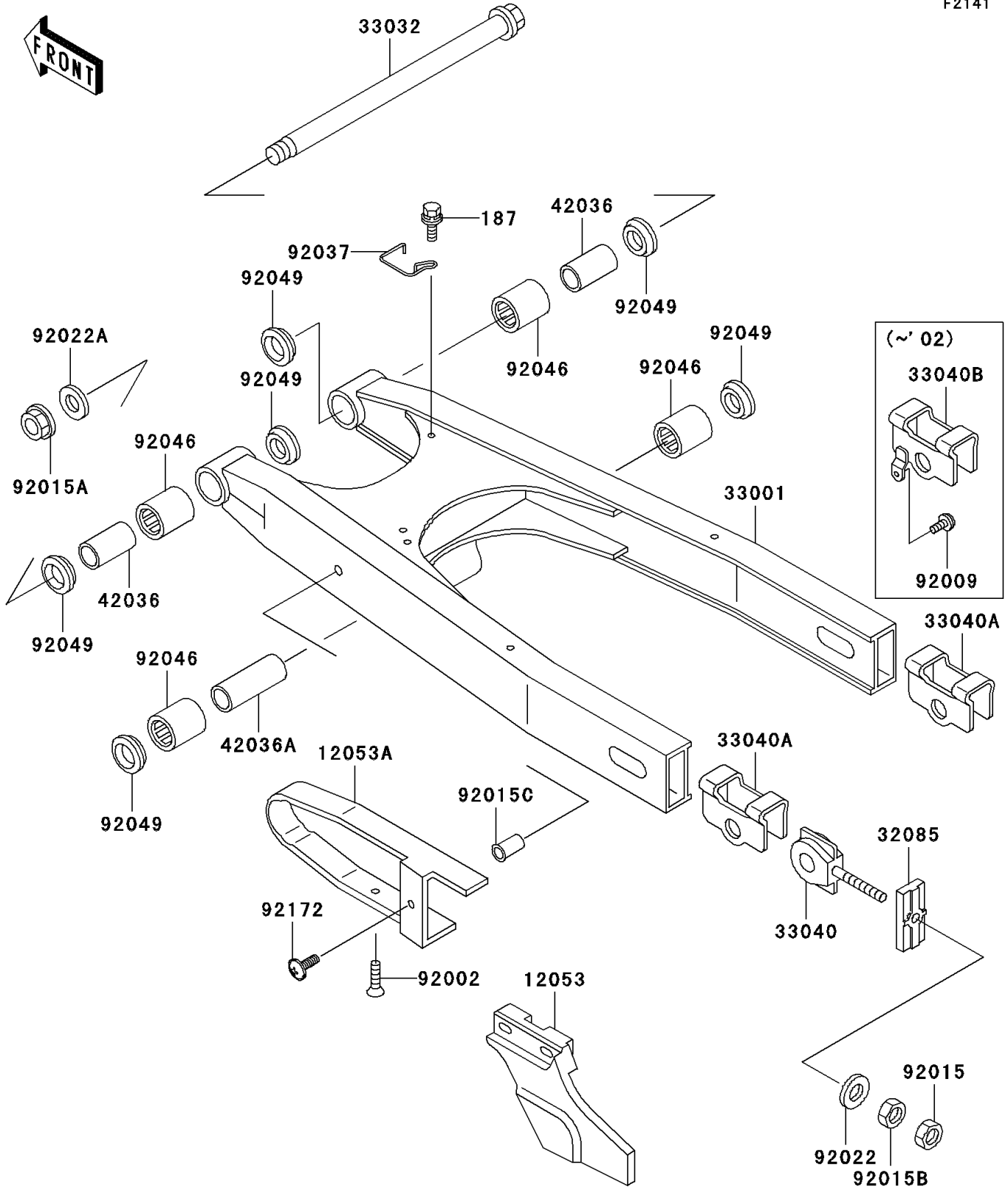


2003 KLR650 PARTS DIAGRAM

Swingarm

F2141



2003 KLR650 PARTS LIST

Swingarm

| ITEM NAME | PART NUMBER | QUANTITY |
|---|---------------|----------|
| BOLT-UPSET-WSP (Ref # 187) | 187D0616 | 1 |
| GUIDE-CHAIN,RR (Ref # 12053) | 12053-1104 | 1 |
| GUIDE-CHAIN,DRIVE,FR (Ref # 12053A) | 12053-1360 | 1 |
| STOPPER,CHAIN ADJUSTER (Ref # 32085) | 32085-1256 | 2 |
| ARM-COMP-SWING,SILVER NO.25 (Ref # 33001) | 33001-1278-CE | 1 |
| SHAFT-SWING ARM (Ref # 33032) | 33032-1128 | 1 |
| ADJUSTER-CHAIN,INNER (Ref # 33040) | 33040-1075 | 2 |
| ADJUSTER-CHAIN,OUTER (Ref # 33040A) | 33040-1076 | 2 |
| SLEEVE,15X20X47.5 (Ref # 42036) | 42036-1204 | 2 |
| SLEEVE,15X20X82 (Ref # 42036A) | 42036-1205 | 1 |
| BOLT,6MM (Ref # 92002) | 92002-1775 | 1 |
| NUT,8MM (Ref # 92015) | 92015-1364 | 2 |
| NUT,14MM (Ref # 92015A) | 92015-1459 | 1 |
| NUT,8MM (Ref # 92015B) | 92015-1658 | 2 |
| NUT,CRIMP 6MM (Ref # 92015C) | 92015-1796 | 1 |
| WASHER,8.5X16X1.2 (Ref # 92022) | 92022-1582 | 2 |
| WASHER,16X32X3.2 (Ref # 92022A) | 92022-1701 | 1 |
| CLAMP,HOSE (Ref # 92037) | 92037-1902 | 1 |
| BEARING-NEEDLE,BM202726 (Ref # 92046) | 92046-1110 | 4 |
| SEAL-OIL,ARM (Ref # 92049) | 92049-1109 | 6 |
| SCREW,6X18 (Ref # 92172) | 92172-0002 | 1 |