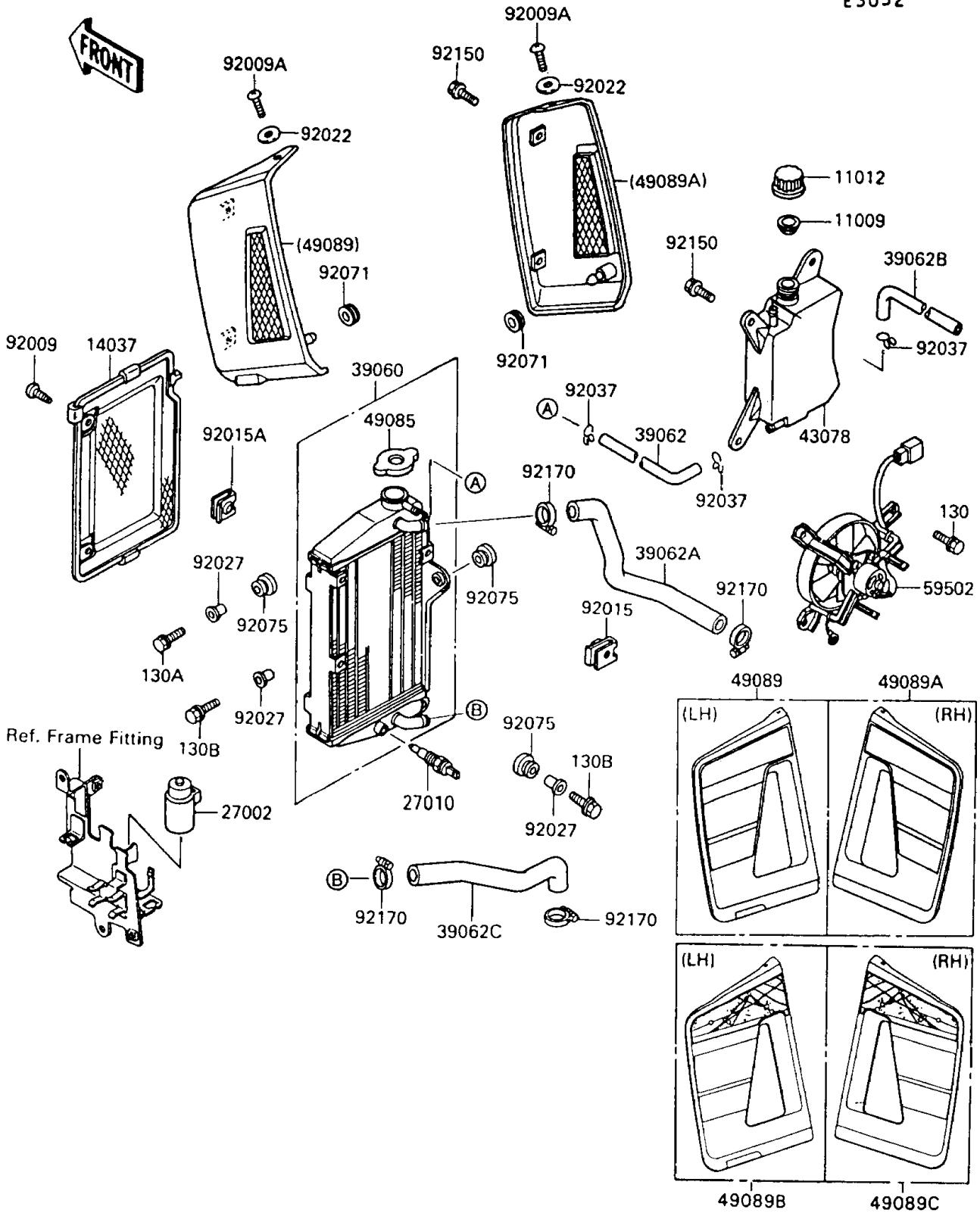


1994 KLR650 PARTS DIAGRAM

Radiator

E 3032



1994 KLR650 PARTS LIST

Radiator

| ITEM NAME | PART NUMBER | QUANTITY |
|---|---------------|----------|
| GASKET,RESERVOIR TANK CAP (Ref # 11009) | 11009-1145 | 1 |
| CAP (Ref # 11012) | 11012-1084 | 1 |
| SCREEN (Ref # 14037) | 14037-1088 | 1 |
| RELAY-ASSY (Ref # 27002) | 27002-1051 | 1 |
| SWITCH,FAN (Ref # 27010) | 27010-1167 | 1 |
| RADIATOR (Ref # 39060) | 39060-1074 | 1 |
| HOSE-COOLING (Ref # 39062) | 39062-1125 | 1 |
| HOSE-COOLING,HEAD-RADIATOR (Ref # 39062A) | 39062-1217 | 1 |
| HOSE-COOLING,RESERVOIR (Ref # 39062B) | 39062-1220 | 1 |
| HOSE-COOLING,RADIATOR-PUMP (Ref # 39062C) | 39062-1243 | 1 |
| RESERVOIR (Ref # 43078) | 43078-1083 | 1 |
| CAP-ASSY-PRESSURE (Ref # 49085) | 49085-1066 | 1 |
| SHROUD-ENGINE,LH,P.WHITE (Ref # 49089B) | 49089-5199-6F | 1 |
| SHROUD-ENGINE,RH,P.WHITE (Ref # 49089C) | 49089-5200-6F | 1 |
| FAN-ASSY (Ref # 59502) | 59502-1082 | 1 |
| SCREW,6X12 (Ref # 92009) | 92009-1480 | 2 |
| SCREW,5X14 (Ref # 92009A) | 92009-1653 | 2 |
| NUT (Ref # 92015) | 92015-1487 | 3 |
| NUT,6MM (Ref # 92015A) | 92015-1758 | 2 |
| WASHER,NYLON,5.3X11.5X1.5 (Ref # 92022) | 92022-1521 | 2 |
| COLLAR (Ref # 92027) | 92027-1183 | 3 |
| CLAMP,TUBE (Ref # 92037) | 92037-147 | 3 |
| GROMMET (Ref # 92071) | 92071-056 | 2 |
| DAMPER (Ref # 92075) | 92075-1352 | 3 |
| BOLT,FLANGED,6X16 (Ref # 92150) | 92150-1506 | 4 |
| CLAMP,COOLING HOSE (Ref # 92170) | 92170-1033 | 4 |
| BOLT-FLANGED (Ref # 130) | 130J0612 | 3 |
| BOLT-FLANGED (Ref # 130A) | 130J0620 | 1 |
| BOLT-FLANGED,6X25 (Ref # 130B) | 130J0625 | 2 |