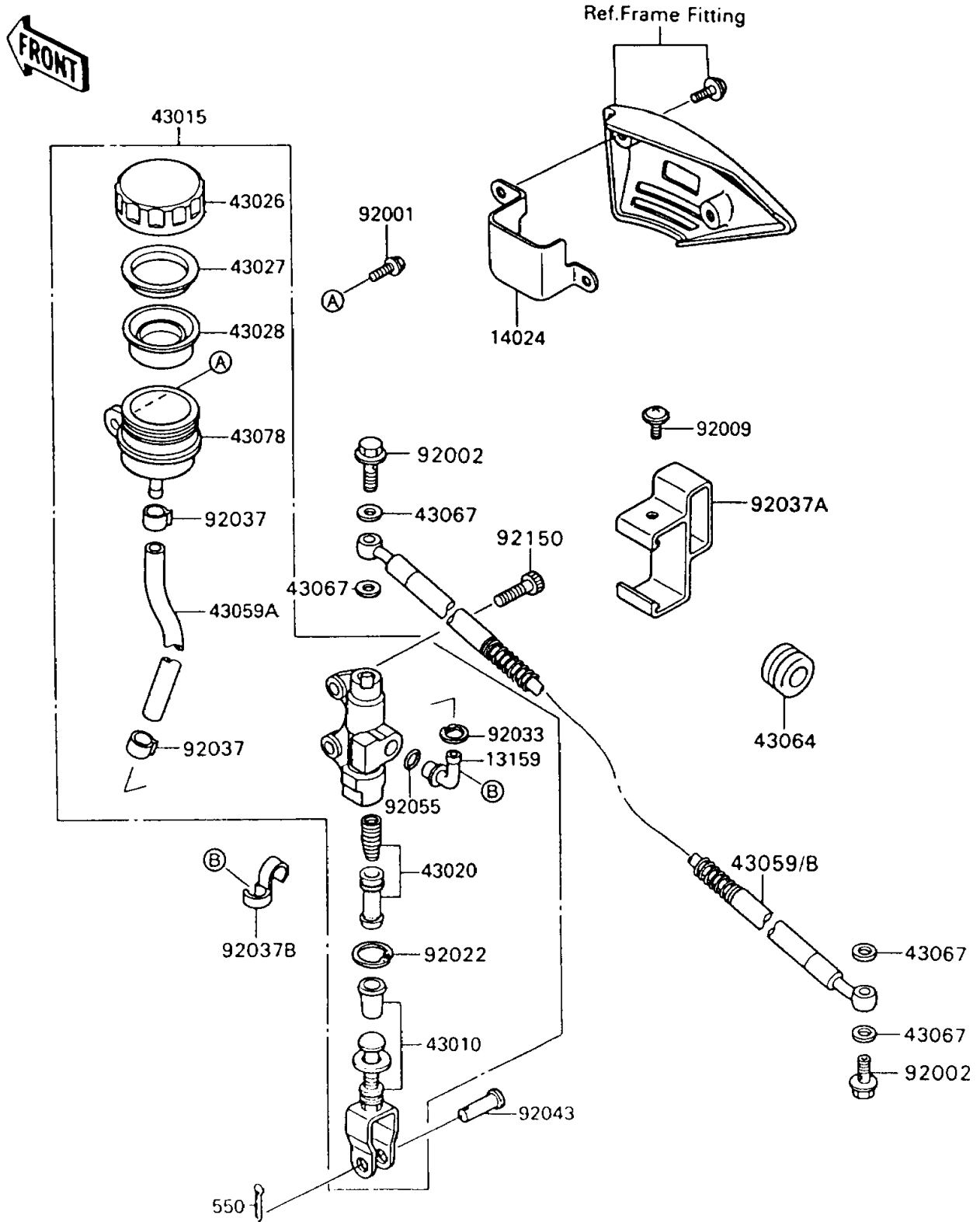


1995 KLR650 PARTS DIAGRAM

Rear Master Cylinder

F 2293



1995 KLR650 PARTS LIST

Rear Master Cylinder

| ITEM NAME | PART NUMBER | QUANTITY |
|---------------------------------------|-------------|----------|
| CONNECTOR (Ref # 13159) | 13159-1056 | 1 |
| COVER,RESERVOIR TANK (Ref # 14024) | 14024-1531 | 1 |
| ROD-ASSY-BRAKE (Ref # 43010) | 43010-1062 | 1 |
| CYLINDER-ASSY-MASTER,RR (Ref # 43015) | 43015-1365 | 1 |
| PISTON-COMP-BRAKE (Ref # 43020) | 43020-1063 | 1 |
| CAP-BRAKE (Ref # 43026) | 43026-1064 | 1 |
| PLATE-DIAPHRAGM (Ref # 43027) | 43027-1053 | 1 |
| DIAPHRAGM (Ref # 43028) | 43028-1065 | 1 |
| HOSE-BRAKE (Ref # 43059A) | 43059-1408 | 1 |
| HOSE-BRAKE,RR (Ref # 43059B) | 43059-1801 | 1 |
| GROMMET,HOSE CLAMP (Ref # 43064) | 43064-007 | 1 |
| WASHER,10.5X15X1.5 (Ref # 43067) | 43067-001 | 4 |
| RESERVOIR (Ref # 43078) | 43078-1080 | 1 |
| BOLT,W/P,6X16 (Ref # 92001) | 92001-1860 | 1 |
| BOLT,OIL,L=23 (Ref # 92002) | 92002-1888 | 2 |
| SCREW,6X10,WHITE (Ref # 92009) | 92009-1286 | 1 |
| WASHER,CIRCRIP (Ref # 92022) | 92022-1601 | 1 |
| RING-SNAP,20.5MM (Ref # 92033) | 92033-1186 | 1 |
| CLAMP (Ref # 92037) | 92037-1710 | 2 |
| CLAMP,HOSE (Ref # 92037A) | 92037-1895 | 1 |
| CLAMP,HOSE (Ref # 92037B) | 92037-1914 | 1 |
| PIN,8MM (Ref # 92043) | 92043-1303 | 1 |
| RING-O,MASTER CYLINDER (Ref # 92055) | 92055-1251 | 1 |
| BOLT,SOCKET,8X30 (Ref # 92150) | 92150-1843 | 2 |
| PIN-COTTER,2.0X15 (Ref # 550) | 550D2015 | 1 |