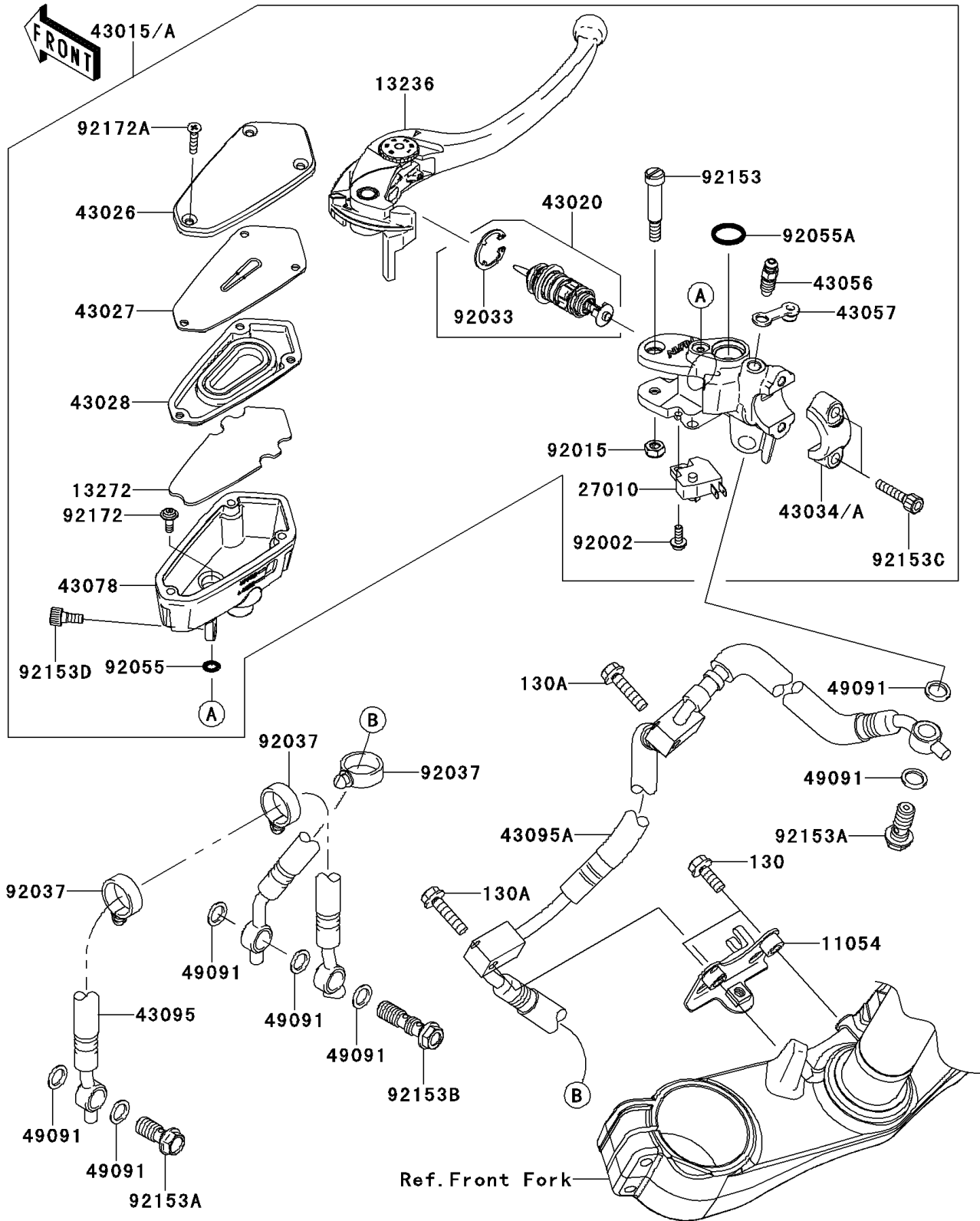


2009 Concoors™ 14 PARTS DIAGRAM

Front Master Cylinder

F2291



2009 Concours™ 14 PARTS LIST

Front Master Cylinder

ITEM NAME	PART NUMBER	QUANTITY
BOLT-FLANGED,6X18 (Ref # 130)	130BA0618	2
BOLT-FLANGED,6X25 (Ref # 130A)	130BA0625	2
BRACKET (Ref # 11054)	11054-0828	1
LEVER-COMP,FRONT BRAKE (Ref # 13236)	13236-0103	1
PLATE (Ref # 13272)	13272-0220	1
SWITCH,BRAKE (Ref # 27010)	27010-0025	1
CYLINDER-ASSY-MASTER,FR (Ref # 43015)	43015-0086	1
CYLINDER-ASSY-MASTER,FR (Ref # 43015A)	43015-0148	1
PISTON-COMP-BRAKE (Ref # 43020)	43020-0010	1
CAP-BRAKE (Ref # 43026)	43026-0011	1
PLATE-DIAPHRAGM (Ref # 43027)	43027-0003	1
DIAPHRAGM (Ref # 43028)	43028-0008	1
HOLDER-BRAKE,MASTER CYLINDER (Ref # 43034)	43034-0056	1
HOLDER-BRAKE,MASTER CYLINDER (Ref # 43034A)	43034-1016	1
BREATHER-BRAKE (Ref # 43056)	43056-1056	1
CAP-BREATHER (Ref # 43057)	43057-1001	1
RESERVOIR (Ref # 43078)	43078-0048	1
HOSE-BRAKE,FR (Ref # 43095)	43095-0212	1
HOSE-BRAKE,FR (Ref # 43095A)	43095-0316	1
WASHER-SEAL,10.1X14.5X1.5 (Ref # 49091)	49091-0001	7
BOLT,SCREW,4X12 (Ref # 92002)	92002-1323	1
NUT,FLANGED,6MM,BLACK (Ref # 92015)	92015-1233	1
RING-SNAP (Ref # 92033)	92033-0034	1
CLAMP,HOSE (Ref # 92037)	92037-1827	3
RING-O (Ref # 92055)	92055-0137	1
RING-O,MASTER CYLINDER (Ref # 92055A)	92055-1251	1
BOLT,LEVER (Ref # 92153)	92153-0868	1
BOLT,OIL,L=23 (Ref # 92153A)	92153-1419	2
BOLT,OIL,L=37 (Ref # 92153B)	92153-1438	1

2009 Concours™ 14 PARTS LIST

Front Master Cylinder

ITEM NAME	PART NUMBER	QUANTITY
BOLT,SOCKET,6X22 (Ref # 92153C)	92153-1518	2
BOLT,SOCKET,6X12 (Ref # 92153D)	92153-1853	1
SCREW (Ref # 92172)	92172-0319	1
SCREW,4X20 (Ref # 92172A)	92172-0320	3