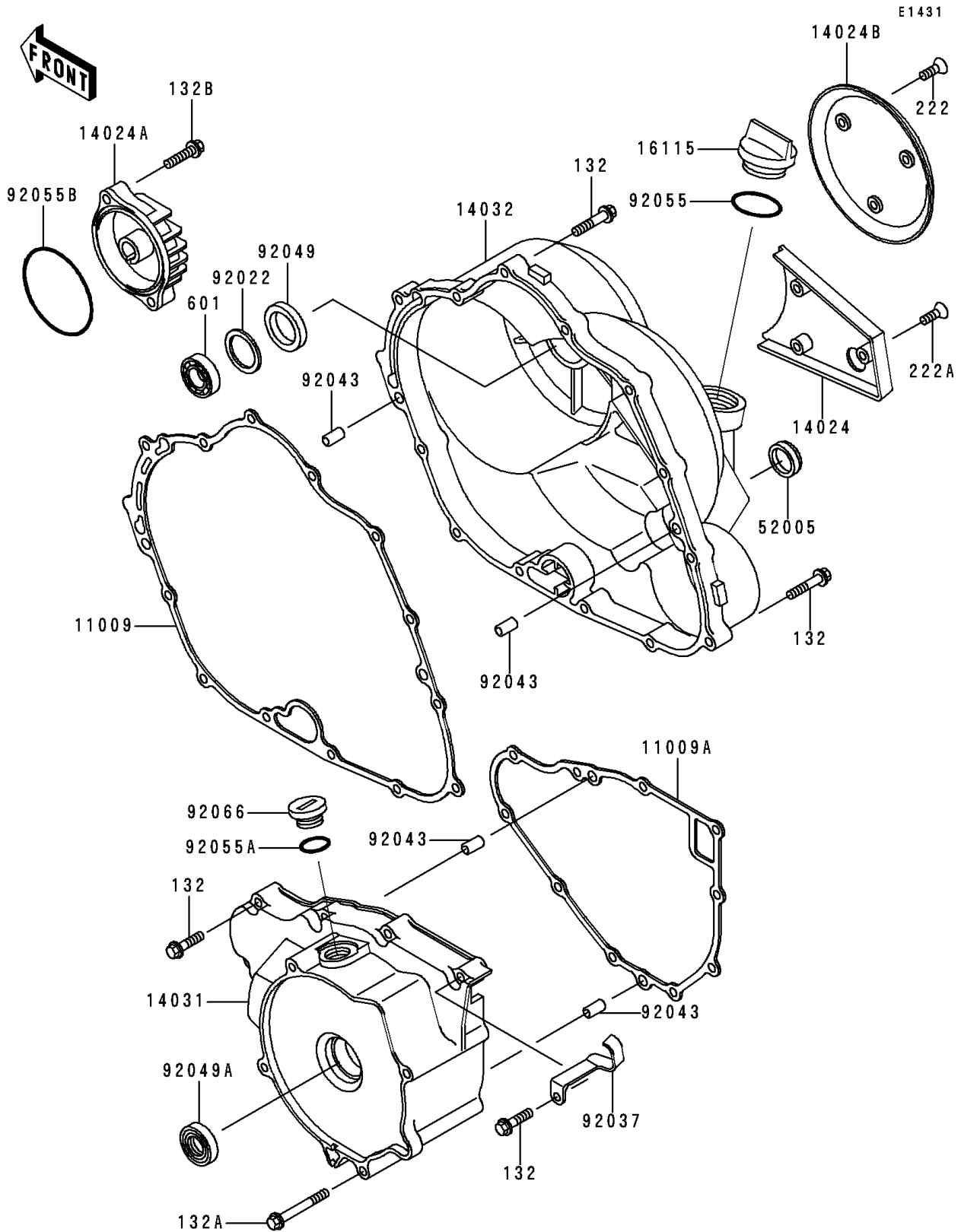


1989 Bayou 300 PARTS DIAGRAM

Engine Cover



1989 Bayou 300 PARTS LIST

Engine Cover

| ITEM NAME | PART NUMBER | QUANTITY |
|--------------------------------------|-------------|----------|
| BOLT-FLANGED-SMALL (Ref # 132) | 132J0630 | 21 |
| BOLT-FLANGED-SMALL (Ref # 132A) | 132J0680 | 1 |
| BOLT-FLANGED-SMALL (Ref # 132B) | 132Y0625 | 2 |
| SCREW-CSK-RD-CROS (Ref # 222) | 222C0512 | 3 |
| SCREW-CSK-RD-CROS (Ref # 222A) | 222C0518 | 3 |
| BEARING-BALL,#6202C3 (Ref # 601) | 601B6202 | 1 |
| GASKET,CLUTCH COVER (Ref # 11009) | 11009-1518 | 1 |
| GASKET,GENRATOR COVER (Ref # 11009A) | 11009-1519 | 1 |
| COVER,RELEASE ADJUSTER (Ref # 14024) | 14024-1061 | 1 |
| COVER,OIL FILTER (Ref # 14024A) | 14024-1062 | 1 |
| COVER (Ref # 14024B) | 14025-1807 | 1 |
| COVER-GENERATOR (Ref # 14031) | 14031-1214 | 1 |
| COVER-CLUTCH (Ref # 14032) | 14032-1197 | 1 |
| CAP-OIL FILLER (Ref # 16115) | 16115-1009 | 1 |
| GAUGE,OIL LEVEL (Ref # 52005) | 52005-1009 | 1 |
| WASHER,25.3X33X1 (Ref # 92022) | 92022-1109 | 1 |
| CLAMP (Ref # 92037) | 92037-1872 | 1 |
| PIN,6.2X8X14 (Ref # 92043) | 92043-1263 | 4 |
| SEAL-OIL,SCY 15X30X7 (Ref # 92049) | 92049-1158 | 1 |
| SEAL-OIL,TC25356 (Ref # 92049A) | 92049-1317 | 1 |
| RING-O,31.5X2.6 (Ref # 92055) | 92055-049 | 1 |
| RING-O (Ref # 92055A) | 92055-1146 | 1 |
| RING-O,63.6X2.4 (Ref # 92055B) | 92055-1433 | 1 |
| PLUG,COVER (Ref # 92066) | 92066-1163 | 1 |