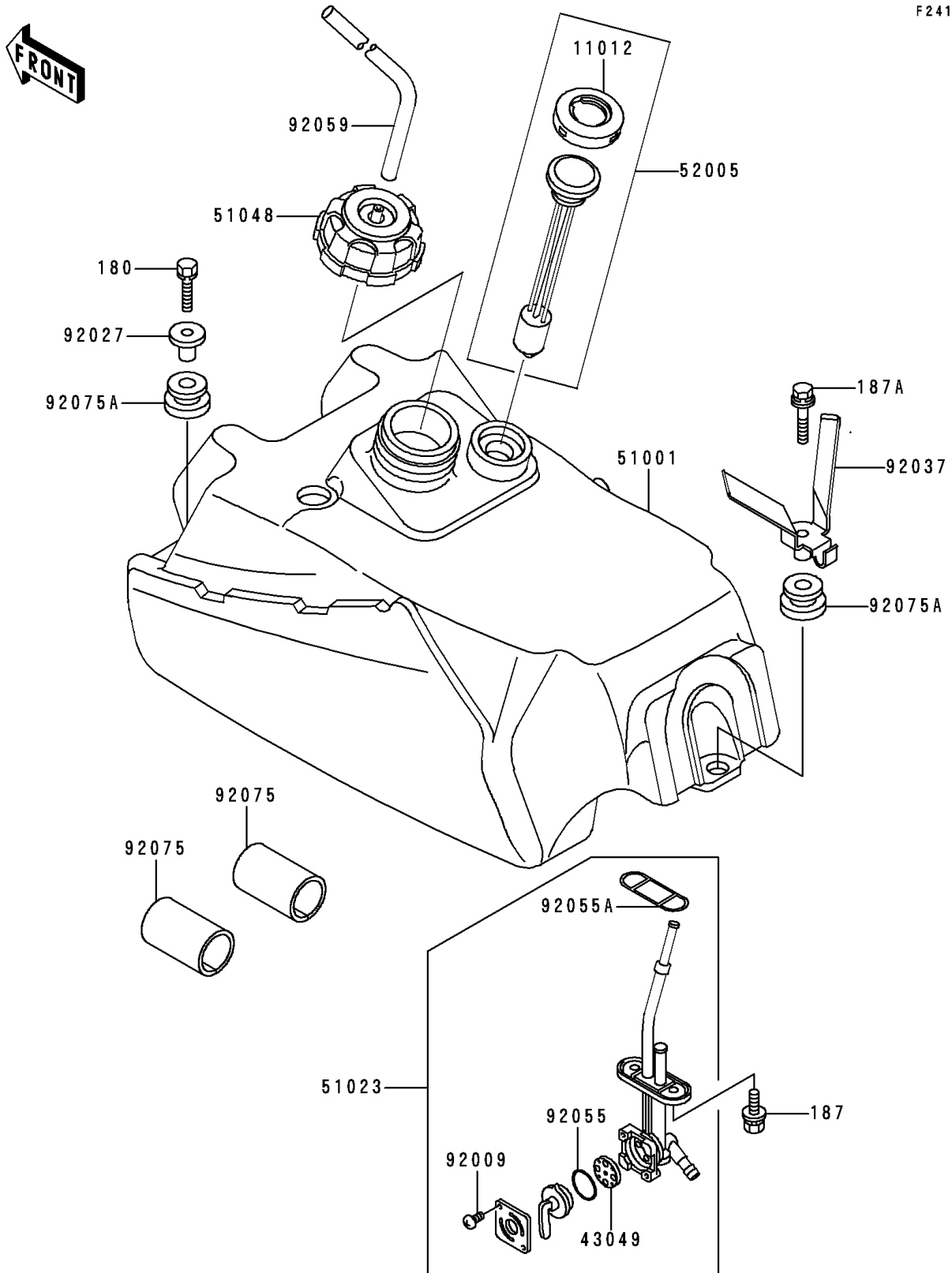


# 1989 Bayou 300 PARTS DIAGRAM

Fuel Tank

F2410



# 1989 Bayou 300 PARTS LIST

## Fuel Tank

| ITEM NAME                               | PART NUMBER | QUANTITY |
|---|-------------|----------|
| BOLT-UPSET-WS,6X25 (Ref # 180)          | 180D0625    | 2        |
| BOLT-UPSET-WSP (Ref # 187)              | 187B0614    | 2        |
| BOLT-UPSET-WSP (Ref # 187A)             | 187D0630    | 1        |
| CAP,FUEL GAUGE (Ref # 11012)            | 11012-1627  | 1        |
| PACKING,FUEL TAP LEVER (Ref # 43049)    | 43049-1017  | 1        |
| TANK-COMP-FUEL (Ref # 51001)            | 51001-1278  | 1        |
| TAP-ASSY,FUEL (Ref # 51023)             | 51023-1144  | 1        |
| CAP-ASSY-TANK,FUEL (Ref # 51048)        | 51048-1092  | 1        |
| GAUGE,FUEL (Ref # 52005)                | 52005-1092  | 1        |
| SCREW,3X5 (Ref # 92009)                 | 92009-1123  | 2        |
| COLLAR,L=16.1 (Ref # 92027)             | 92027-1847  | 2        |
| CLAMP,HOSE (Ref # 92037)                | 92037-1982  | 1        |
| RING-O,FUEL TAP LEVER (Ref # 92055)     | 92055-1111  | 1        |
| RING-O,FUEL TAP PACKING (Ref # 92055A)  | 92055-1348  | 1        |
| TUBE,5X9X470 (Ref # 92059)              | 92059-1890  | 1        |
| DAMPER,FUEL TANK,FR,UNDER (Ref # 92075) | 92075-1369  | 2        |
| DAMPER (Ref # 92075A)                   | 92075-1787  | 3        |