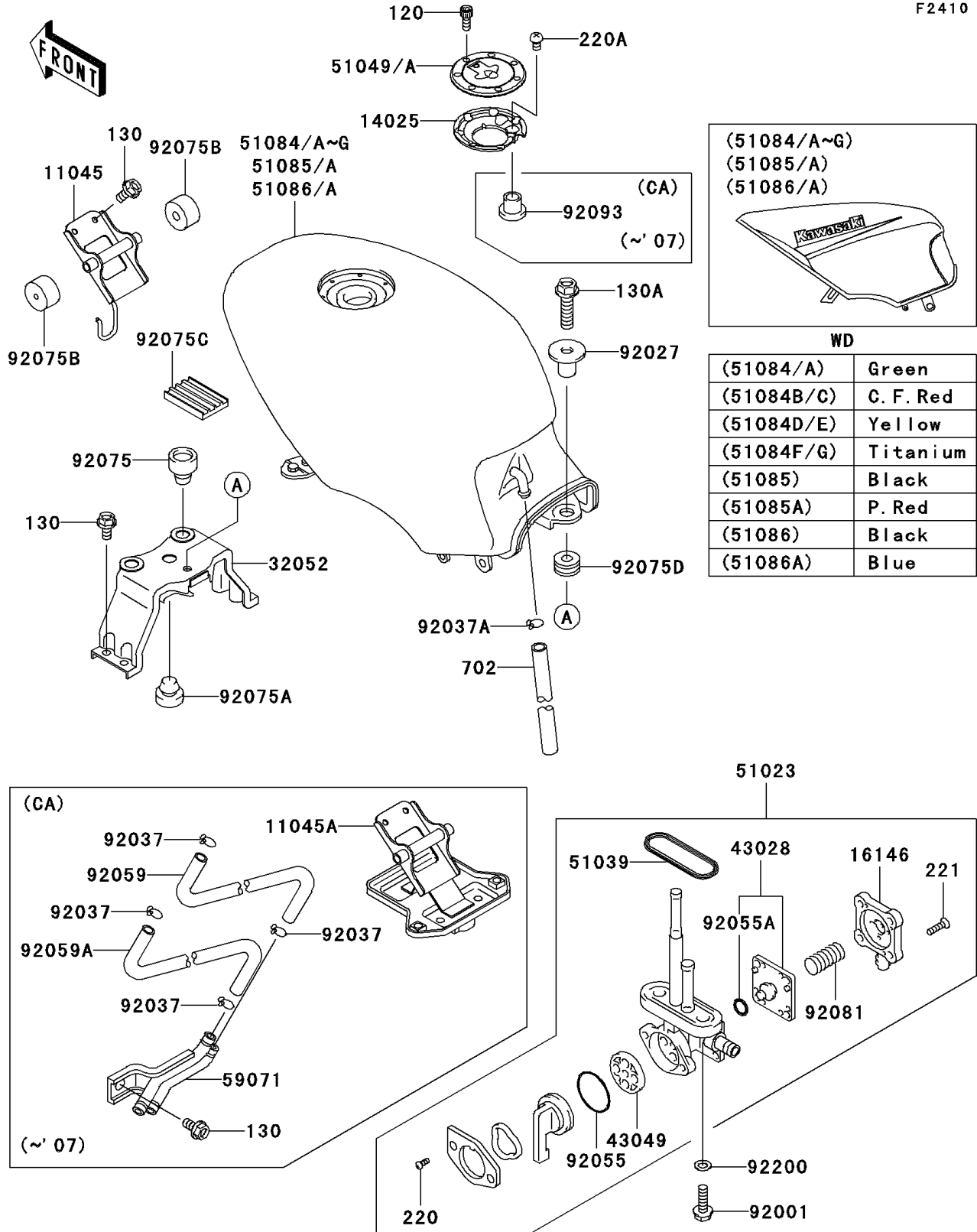


# 2009 Ninja® 500R PARTS DIAGRAM

Fuel Tank(6/6)

F2410



## 2009 Ninja® 500R PARTS LIST

Fuel Tank(6/6)

ITEM NAME	PART NUMBER	QUANTITY
BRACKET,FUEL TANK,FR (Ref # 11045)	11045-1362	1
COVER,TANK CAP (Ref # 14025)	14025-1913	1
COVER-ASSY,TAP DIAPHRAGM (Ref # 16146)	16146-1010	1
BRACKET-TANK,FUEL,RR (Ref # 32052)	32052-1394	1
DIAPHRAGM (Ref # 43028)	43028-1033	1
PACKING (Ref # 43049)	43049-1103	1
TAP-ASSY,FUEL (Ref # 51023)	51023-1389	1
RING,TAP FLANGED (Ref # 51039)	51039-003	1
CAP-TANK,FUEL (Ref # 51049)	51049-0018	1
TANK-COMP-FUEL,M.D,BLACK (Ref # 51086)	51086-5021-17K	1
TANK-COMP-FUEL,C.P.BLUE (Ref # 51086A)	51086-5022-723	1
BOLT,6X20 (Ref # 92001)	92001-1091	2
COLLAR,L=19.3 (Ref # 92027)	92027-1780	1
CLAMP (Ref # 92037A)	92037-1712	1
RING-O,TAP LEVER (Ref # 92055)	92055-1085	1
RING-O (Ref # 92055A)	92055-1664	1
DAMPER (Ref # 92075)	92075-015	2
DAMPER (Ref # 92075A)	92075-1045	1
DAMPER,FUEL TANK,FR (Ref # 92075B)	92075-1115	2
DAMPER (Ref # 92075C)	92075-1489	2
DAMPER (Ref # 92075D)	92075-1736	1
SPRING,TAP DIAPHRAGM (Ref # 92081)	92081-1240	1
WASHER,6.5X11.5X0.8 (Ref # 92200)	92200-0117	2
BOLT-SOCKET,5X12 (Ref # 120)	120CB0512	7
BOLT-FLANGED,6X12 (Ref # 130)	130AA0612	6
BOLT-FLANGED,8X30 (Ref # 130A)	130BA0830	1
SCREW-PAN-CROS,3X8 (Ref # 220)	220AA0308	2
SCREW-PAN-CROSS,5X8 (Ref # 220A)	220AB0508	1
SCREW-CSK-CROS,4X14 (Ref # 221)	221AA0414	4

## 2009 Ninja® 500R PARTS LIST

Fuel Tank(6/6)

ITEM NAME	PART NUMBER	QUANTITY
TUBE-RUBBER,7X10X380 (Ref # 702)	702A07380	1