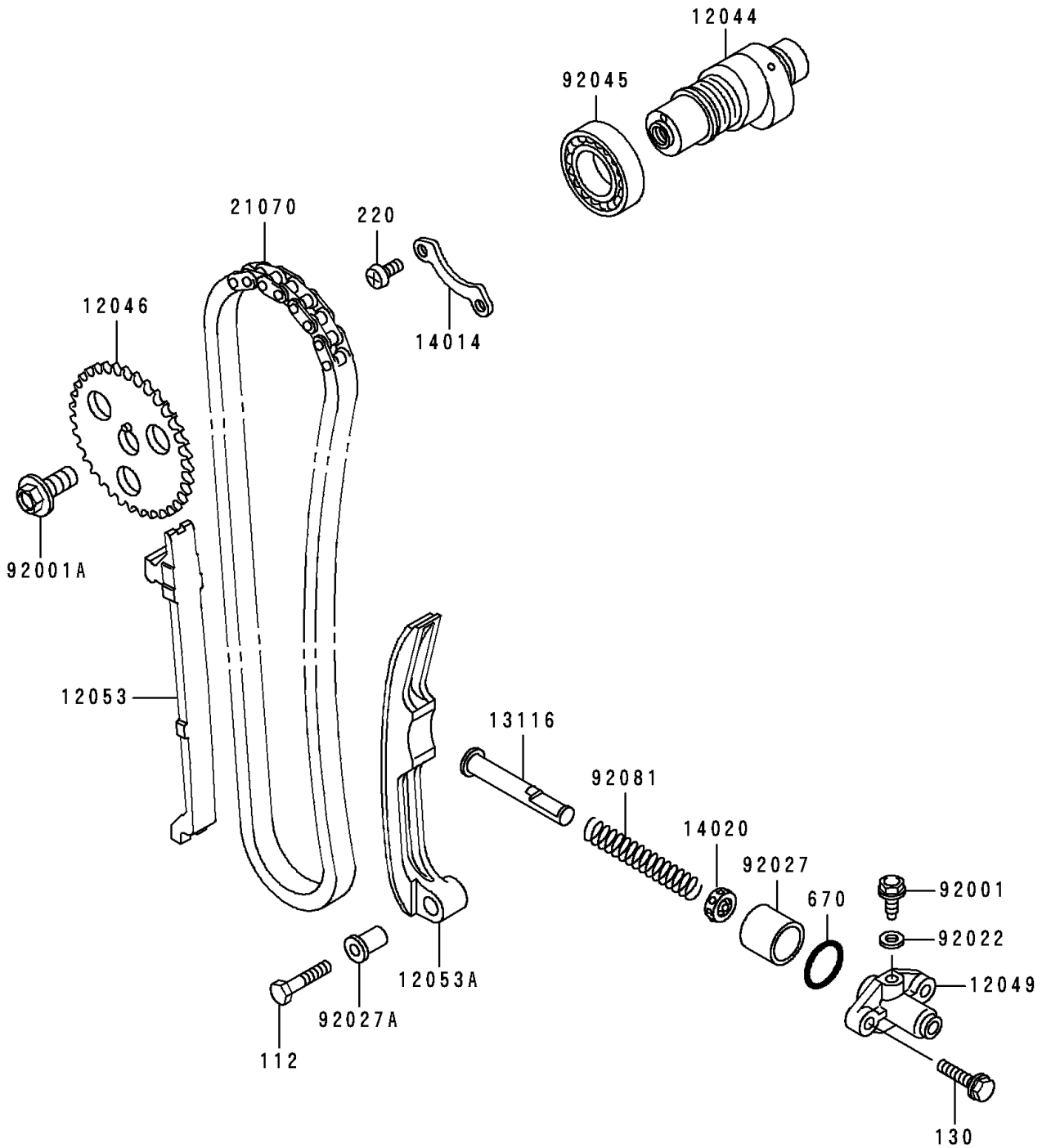


1992 Bayou 300 4X4 PARTS DIAGRAM

Camshaft(s)/Tensioner

E1230



1992 Bayou 300 4X4 PARTS LIST

Camshaft(s)/Tensioner

| ITEM NAME | PART NUMBER | QUANTITY |
|--|-------------|----------|
| BOLT-UPSET (Ref # 112) | 112G0630 | 1 |
| BOLT-FLANGED (Ref # 130) | 130Y0625 | 2 |
| SCREW-PAN-CROS,6X10 (Ref # 220) | 220B0610 | 2 |
| O RING,21MM (Ref # 670) | 670B2021 | 1 |
| CAMSHAFT-VALVE (Ref # 12044) | 12044-1339 | 1 |
| SPROCKET,CAM CHAIN,32T (Ref # 12046) | 12046-1037 | 1 |
| TENSIONER,CAM CHAIN (Ref # 12049) | 12049-1055 | 1 |
| GUIDE-CHAIN,CAM (Ref # 12053) | 12053-023 | 1 |
| GUIDE-CHAIN,CAM (Ref # 12053A) | 12053-024 | 1 |
| ROD-PUSH,TENSIONER (Ref # 13116) | 13116-1019 | 1 |
| PLATE-POSITION (Ref # 14014) | 14014-1030 | 1 |
| RETAINER,TENSIONER (Ref # 14020) | 14020-1054 | 1 |
| CHAIN,CAMSHAFT,BF05TX90L (Ref # 21070) | 21070-013 | 1 |
| BOLT,TENSIONER ADJUST (Ref # 92001) | 92001-1155 | 1 |
| BOLT,10X23 (Ref # 92001A) | 92001-1859 | 1 |
| WASHER,6.1X12X1 (Ref # 92022) | 92022-077 | 1 |
| COLLAR,TENSIONER (Ref # 92027) | 92027-1273 | 1 |
| COLLAR,L=17.6 (Ref # 92027A) | 92027-155 | 1 |
| BEARING-BALL,#6005C4 (Ref # 92045) | 92045-1056 | 1 |
| SPRING,TENSIONER (Ref # 92081) | 92081-1105 | 1 |