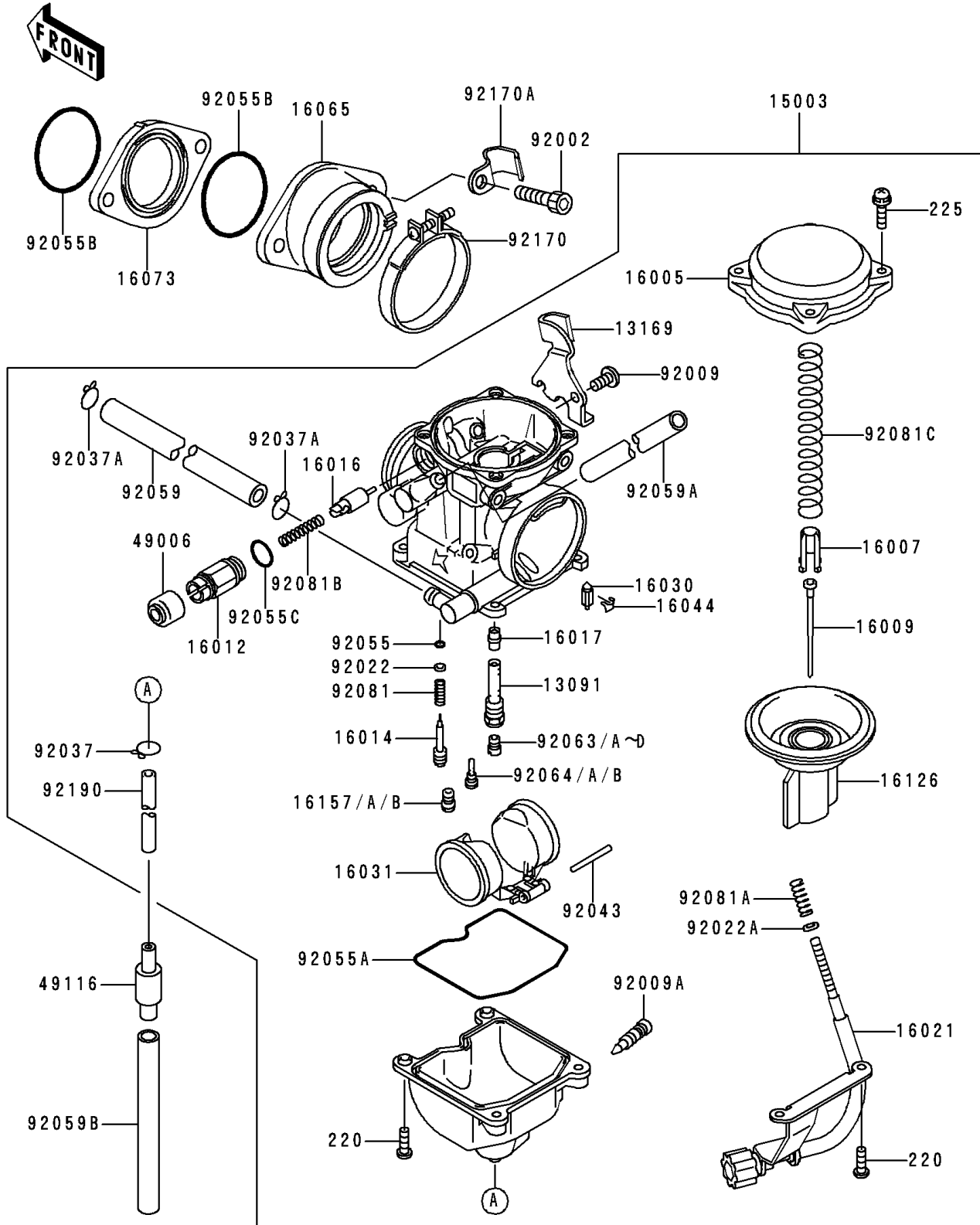


1991 Bayou 300 4X4 PARTS DIAGRAM

Carburetor

E1611



1991 Bayou 300 4X4 PARTS LIST

Carburetor

ITEM NAME	PART NUMBER	QUANTITY
HOLDER,NEEDLE JET (Ref # 13091)	13091-1259	1
PLATE,THROTTLE CABLE (Ref # 13169)	13169-1197	1
CARBURETOR-ASSY (Ref # 15003)	15003-1075	1
TOP-CHAMBER,MIXING (Ref # 16005)	16005-1056	1
SEAT-SPRING,THROTTLE VALVE (Ref # 16007)	16007-1120	1
NEEDLE-JET,N36W (Ref # 16009)	16009-1503	1
CAP-STARTER PLUNGER (Ref # 16012)	16012-1055	1
SCREW-PILOT AIR (Ref # 16014)	16014-1054	1
PLUNGER,STARTER (Ref # 16016)	16016-1065	1
JET-NEEDLE,#6 (Ref # 16017)	16017-1270	1
SCREW-THROTTLE STOP (Ref # 16021)	16021-1115	1
VALVE-FLOAT (Ref # 16030)	16030-1007	1
FLOAT (Ref # 16031)	16031-1056	1
CLAMP,FLOAT VALVE (Ref # 16044)	16044-007	1
HOLDER-CARBURETOR (Ref # 16065)	16065-1177	1
INSULATOR (Ref # 16073)	16073-1074	1
VALVE,VACUUM (Ref # 16126)	16126-1199	1
JET-STARTER,#58 (Ref # 16157)	16157-1057	1
JET-STARTER,#60 (Ref # 16157A)	16157-1058	1
JET-STARTER,#62 (Ref # 16157B)	16157-1059	1
BOOT,STARTER PLUNGER (Ref # 49006)	49006-1165	1
VALVE-ASSY (Ref # 49116)	49116-1126	1
BOLT,SOCKET,6X25 (Ref # 92002)	92002-1093	2
SCREW,5X10 (Ref # 92009)	92009-1365	1
SCREW,DRAIN,M6X0.75 (Ref # 92009A)	92009-1551	1
WASHER,PLAIN (Ref # 92022)	92022-1003	1
WASHER,PLAIN,STOP SPRING (Ref # 92022A)	92022-1480	1
CLAMP,TUBE (Ref # 92037)	92037-1201	1
CLAMP,TUBE (Ref # 92037A)	92037-1531	2

1991 Bayou 300 4X4 PARTS LIST

Carburetor

ITEM NAME	PART NUMBER	QUANTITY
PIN,FLOAT (Ref # 92043)	92043-1207	1
RING-O,PILOT ADJUST (Ref # 92055)	92055-1002	1
RING-O,FLOAT CHAMBER (Ref # 92055A)	92055-1222	1
RING-O,38MM (Ref # 92055B)	92055-1295	2
RING-O,STARTER PLUNGER (Ref # 92055C)	92055-1416	1
TUBE,6.5X11.5X150 (Ref # 92059)	92059-1463	1
TUBE,6.5X9.5X430 (Ref # 92059A)	92059-1727	1
TUBE,7X10X100 (Ref # 92059B)	92059-1736	1
JET-MAIN,2ND,#125 (Ref # 92063)	92063-1069	1
SCREW-PAN-CROS (Ref # 220)	220D0414	4
SCREW-PAN-WSP-CROS (Ref # 225)	225C0418	4
JET-MAIN,#120 (Ref # 92063A)	92063-1072	1
JET-MAIN,2ND,#122 (Ref # 92063B)	92063-1073	1
JET-MAIN,2ND,#128 (Ref # 92063C)	92063-1074	1
JET-MAIN,#130 (Ref # 92063D)	92063-1075	1
JET-PILOT,#35 (Ref # 92064)	92064-1101	1
JET-PILOT,#38 (Ref # 92064A)	92064-1119	1
JET-PILOT,#40 (Ref # 92064B)	92064-1125	1
SPRING,PILOT ADJUST SCREW (Ref # 92081)	92081-1002	1
SPRING,THROTTLE STOP SCREW (Ref # 92081A)	92081-1617	1
SPRING,PLUNGER (Ref # 92081B)	92081-1720	1
SPRING,VACUUM VALVE (Ref # 92081C)	92081-1775	1
CLAMP (Ref # 92170)	92170-1438	1
CLAMP (Ref # 92170A)	92170-1552	1
TUBE,4.5X8X330 (Ref # 92190)	92190-1557	1