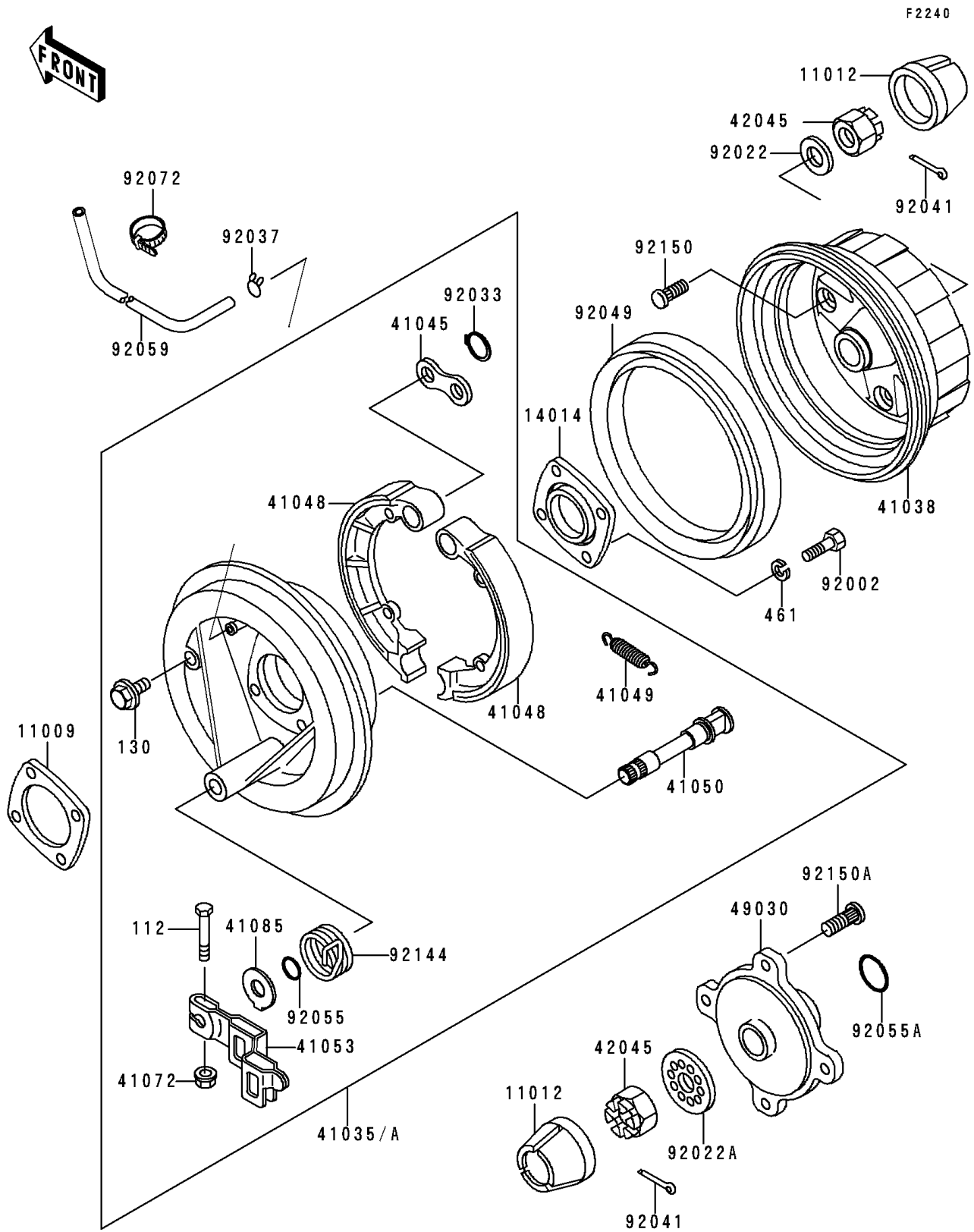


1989 Bayou 300 4X4 PARTS DIAGRAM

Rear Hub



1989 Bayou 300 4X4 PARTS LIST

Rear Hub

| ITEM NAME | PART NUMBER | QUANTITY |
|---|-------------|----------|
| BOLT-UPSET (Ref # 112) | 112H0640 | 1 |
| BOLT-FLANGED,10X12 (Ref # 130) | 130B1012 | 1 |
| WASHER-SPRING,10MM (Ref # 461) | 461F1000 | 4 |
| GASKET (Ref # 11009) | 11009-1765 | 1 |
| CAP,WHEEL (Ref # 11012) | 11012-1519 | 2 |
| PLATE-POSITION (Ref # 14014) | 14014-1072 | 1 |
| PANEL-ASSY-BRAKE,RR,RH (Ref # 41035) | 41035-1245 | 1 |
| DRUM,REAR BRAKE (Ref # 41038) | 41038-1202 | 1 |
| WASHER (Ref # 41045) | 41045-006 | 1 |
| SHOE-BRAKE (Ref # 41048) | 41048-1082 | 2 |
| SPRING,BRAKE SHOE (Ref # 41049) | 41049-012 | 2 |
| CAM-BRAKE (Ref # 41050) | 41050-1077 | 1 |
| LEVER-BRAKE CAM (Ref # 41053) | 41053-1070 | 1 |
| NUT,6MM (Ref # 41072) | 41072-007 | 1 |
| INDICATOR (Ref # 41085) | 41085-1062 | 1 |
| NUT,CASTLE,18MM (Ref # 42045) | 42045-018 | 2 |
| HUB,RR,LH (Ref # 49030) | 49030-1104 | 1 |
| BOLT,10X30 (Ref # 92002) | 92002-1918 | 4 |
| WASHER,18.3X34X4.5 (Ref # 92022) | 92022-1658 | 1 |
| WASHER,T=4.5 (Ref # 92022A) | 92022-1794 | 1 |
| RING-SNAP,15MM (Ref # 92033) | 92033-1250 | 2 |
| CLAMP,TUBE (Ref # 92037) | 92037-147 | 1 |
| COTTER,4.0X35 (Ref # 92041) | 92041-1053 | 2 |
| SEAL-OIL,SD07 190 225 16 NS (Ref # 92049) | 92049-1312 | 1 |
| RING-O,ID=16.4 (Ref # 92055) | 92055-1376 | 1 |
| RING-O,ID=24.5 (Ref # 92055A) | 92055-1459 | 1 |
| TUBE,4.7X9.5X1240 (Ref # 92059) | 92059-1968 | 1 |
| BAND,L=123 (Ref # 92072) | 92072-030 | 2 |
| SPRING (Ref # 92144) | 92144-1365 | 1 |

1989 Bayou 300 4X4 PARTS LIST

Rear Hub

| ITEM NAME | PART NUMBER | QUANTITY |
|-------------------------|-------------|----------|
| BOLT,10MM (Ref # 92150) | 92150-1110 | 4 |
| BOLT (Ref # 92150A) | 92150-1289 | 4 |