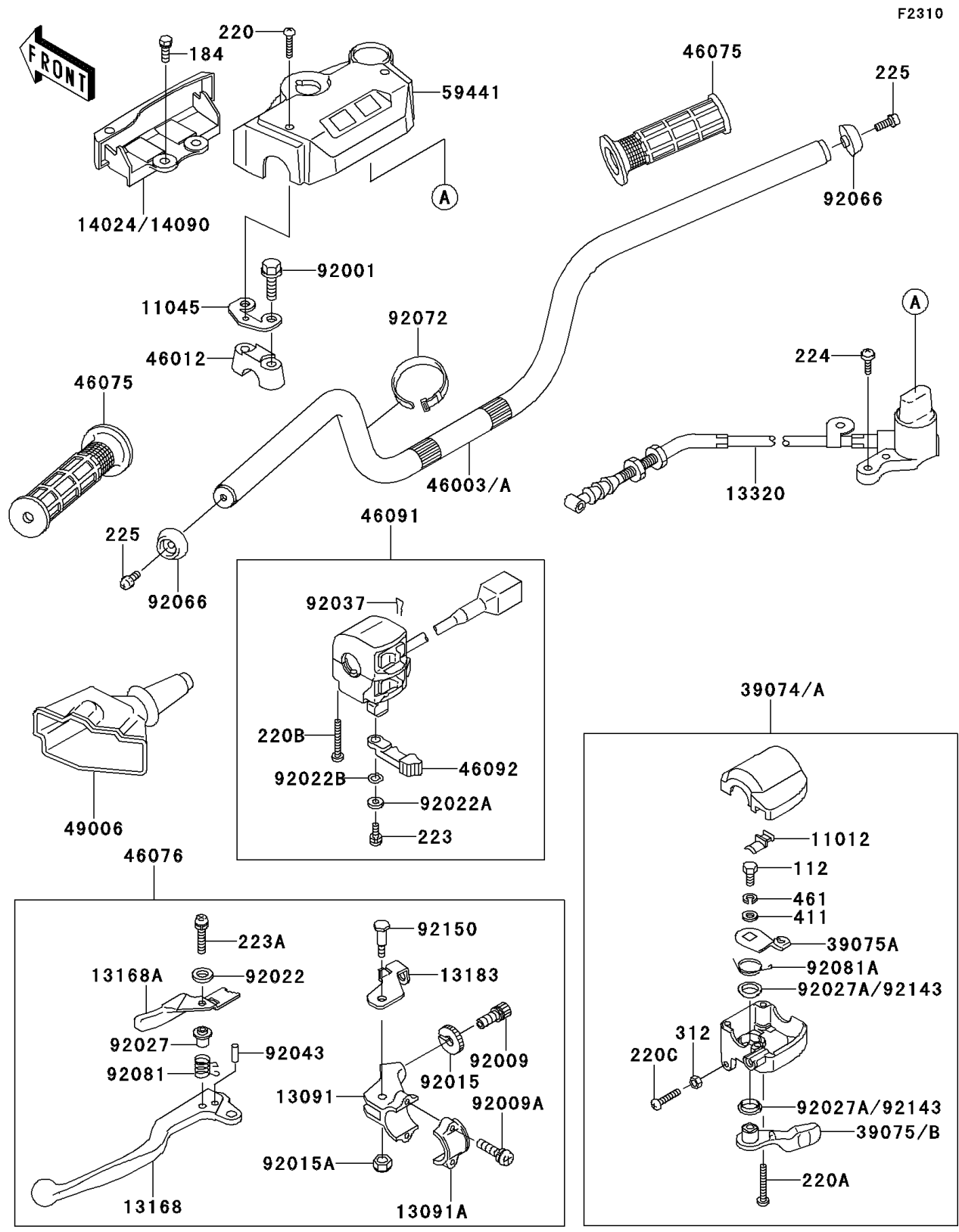


1993 Bayou 300 4X4 PARTS DIAGRAM

Handlebar



1993 Bayou 300 4X4 PARTS LIST

Handlebar

| ITEM NAME | PART NUMBER | QUANTITY |
|---------------------------------------|-------------|----------|
| CAP (Ref # 11012) | 11012-1425 | 1 |
| BRACKET,HANDLE COVER (Ref # 11045) | 11045-1925 | 2 |
| HOLDER,LEVER (Ref # 13091) | 13091-1703 | 1 |
| HOLDER (Ref # 13091A) | 13091-1704 | 1 |
| LEVER (Ref # 13168) | 13168-1449 | 1 |
| LEVER,LOCK (Ref # 13168A) | 13168-1450 | 1 |
| PLATE,LOCK (Ref # 13183) | 13183-1609 | 1 |
| LEVER-ASSY,REVERSE (Ref # 13320) | 13320-1005 | 1 |
| COVER,HANDLE (Ref # 14024) | 14024-1720 | 1 |
| LEVER-ASSY-THROTTLE (Ref # 39074) | 39074-1052 | 1 |
| LEVER-THROTTLE (Ref # 39075) | 39075-1053 | 1 |
| LEVER-THROTTLE,ARM (Ref # 39075A) | 39075-1054 | 1 |
| HANDLE (Ref # 46003) | 46003-1236 | 1 |
| HOLDER-HANDLE (Ref # 46012) | 46012-1168 | 2 |
| GRIP (Ref # 46075) | 46075-1056 | 2 |
| LEVER-ASSY-GRIP,LH (Ref # 46076) | 46076-1178 | 1 |
| HOUSING-ASSY-CONTROL,LH (Ref # 46091) | 46091-1462 | 1 |
| LEVER-GRIP,CHOKE (Ref # 46092) | 46092-1149 | 1 |
| BOOT,CLUTCH LEVER (Ref # 49006) | 49006-1057 | 1 |
| COVER-HANDLE (Ref # 59441) | 59441-1077 | 1 |
| BOLT,FLANGED,8X58 (Ref # 92001) | 92001-1005 | 4 |
| SCREW,CABLE ADJUST,8MM (Ref # 92009) | 92009-1435 | 1 |
| SCREW (Ref # 92009A) | 92009-1627 | 2 |
| NUT,CABLE ADJUST LOCK (Ref # 92015) | 92015-1596 | 1 |
| NUT (Ref # 92015A) | 92015-1829 | 1 |
| WASHER,4MM (Ref # 92022) | 92022-1647 | 1 |
| WASHER,5MM (Ref # 92022A) | 92022-1837 | 1 |
| WASHER,WAVE,5MM (Ref # 92022B) | 92022-1838 | 1 |
| COLLAR,RETURN SPRING (Ref # 92027) | 92027-1336 | 1 |

1993 Bayou 300 4X4 PARTS LIST

Handlebar

| ITEM NAME | PART NUMBER | QUANTITY |
|--|-------------|----------|
| COLLAR (Ref # 92027A) | 92027-1982 | 2 |
| CLAMP,CLIP (Ref # 92037) | 92037-1836 | 1 |
| PIN,SPRING,3X16 (Ref # 92043) | 92043-1268 | 1 |
| PLUG,HANDLE (Ref # 92066) | 92066-1191 | 2 |
| BAND,L=149 (Ref # 92072) | 92072-031 | 1 |
| SPRING,LOCK RETURN (Ref # 92081) | 92081-1358 | 1 |
| SPRING (Ref # 92081A) | 92081-1685 | 1 |
| BOLT-UPSET (Ref # 112) | 112D0614 | 1 |
| BOLT-UPSET-WP-SMALL (Ref # 184) | 184J0814 | 2 |
| SCREW-PAN-CROS,4X20 (Ref # 220) | 220C0420 | 2 |
| SCREW-PAN-CROS (Ref # 220A) | 220C0530 | 2 |
| SCREW-PAN-CROS (Ref # 220B) | 220C0535 | 2 |
| SCREW-PAN-CROS,6X30,BLACK (Ref # 220C) | 220C0630 | 1 |
| SCREW-PAN-WS-CROS (Ref # 223) | 223C0512 | 1 |
| SCREW-PAN-WS-CROS (Ref # 223A) | 223D0420 | 1 |
| SCREW-PAN-WP-CROS,5X20 (Ref # 224) | 224B0520 | 2 |
| SCREW-PAN-WSP-CROS,6X20 (Ref # 225) | 225C0620 | 2 |
| NUT-HEX,6MM,BLACK (Ref # 312) | 312C0600 | 1 |
| WASHER-PLAIN,6MM (Ref # 411) | 411E0600 | 1 |
| WASHER-SPRING (Ref # 461) | 461L0600 | 1 |
| BOLT (Ref # 92150) | 92150-1420 | 1 |