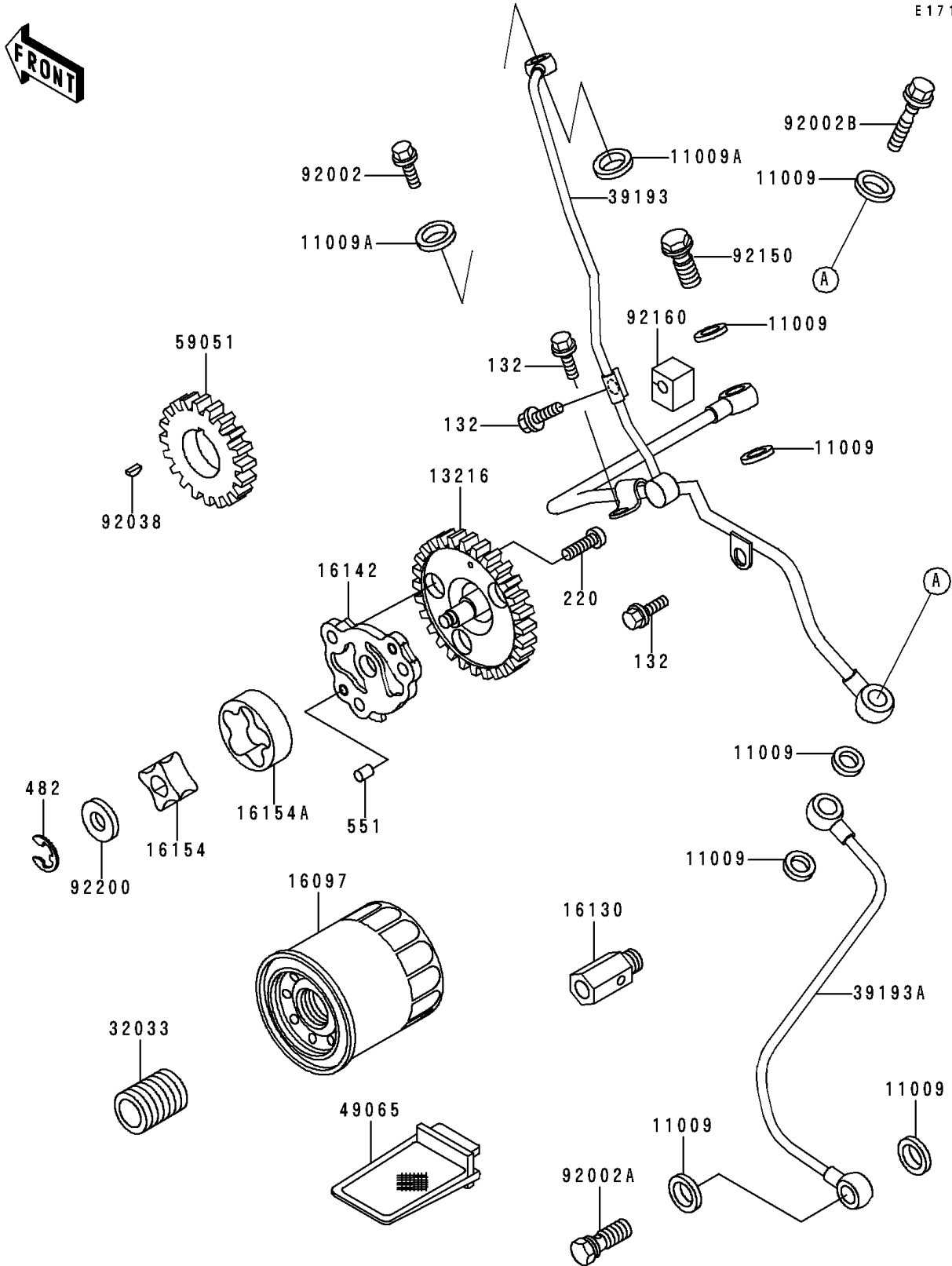


1999 Bayou 400 4X4 PARTS DIAGRAM

Oil Pump/Oil Filter



E1710



1999 Bayou 400 4X4 PARTS LIST

Oil Pump/Oil Filter

| ITEM NAME | PART NUMBER | QUANTITY |
|---|-------------|----------|
| BOLT-FLANGED-SMALL (Ref # 132) | 132G0612 | 3 |
| SCREW-PAN-CROS,6X14 (Ref # 220) | 220B0614 | 3 |
| CIRCLIP-TYPE-E,6MM (Ref # 482) | 482J6000 | 1 |
| PIN-DOWEL,6X8 (Ref # 551) | 551A0608 | 2 |
| GASKET,10X14.5X1.5 (Ref # 11009) | 11009-1105 | 7 |
| GASKET,OIL PIPE,8.2X14X1.0 (Ref # 11009A) | 11009-1344 | 2 |
| GEAR-COMP,52T (Ref # 13216) | 13216-1133 | 1 |
| FILTER-ASSY-OIL (Ref # 16097) | 16097-1063 | 1 |
| VALVE-ASSY-RELIEF (Ref # 16130) | 16130-1001 | 1 |
| COVER-PUMP (Ref # 16142) | 16142-1118 | 1 |
| ROTOR-PUMP,INNER (Ref # 16154) | 16154-2059 | 1 |
| ROTOR-PUMP,OUTER (Ref # 16154A) | 16154-2060 | 1 |
| PIPE,OIL FILTER (Ref # 32033) | 32033-1535 | 1 |
| PIPE-OIL,HEAD-CASE (Ref # 39193) | 39193-1008 | 1 |
| PIPE-OIL,PARTICULAR (Ref # 39193A) | 39193-1009 | 1 |
| FILTER-OIL (Ref # 49065) | 49065-1070 | 1 |
| GEAR-SPUR,PUMP,30T (Ref # 59051) | 59051-1255 | 1 |
| BOLT,BANJO,8X20 (Ref # 92002) | 92002-1429 | 1 |
| BOLT,OIL,L=23 (Ref # 92002A) | 92002-1888 | 1 |
| BOLT,OIL,L=37 (Ref # 92002B) | 92002-1909 | 1 |
| KEY (Ref # 92038) | 92038-1056 | 1 |
| BOLT,BANJO,10X23 (Ref # 92150) | 92150-1123 | 1 |
| DAMPER (Ref # 92160) | 92160-1522 | 1 |
| WASHER,7.7X13X1.0 (Ref # 92200) | 92200-1107 | 1 |