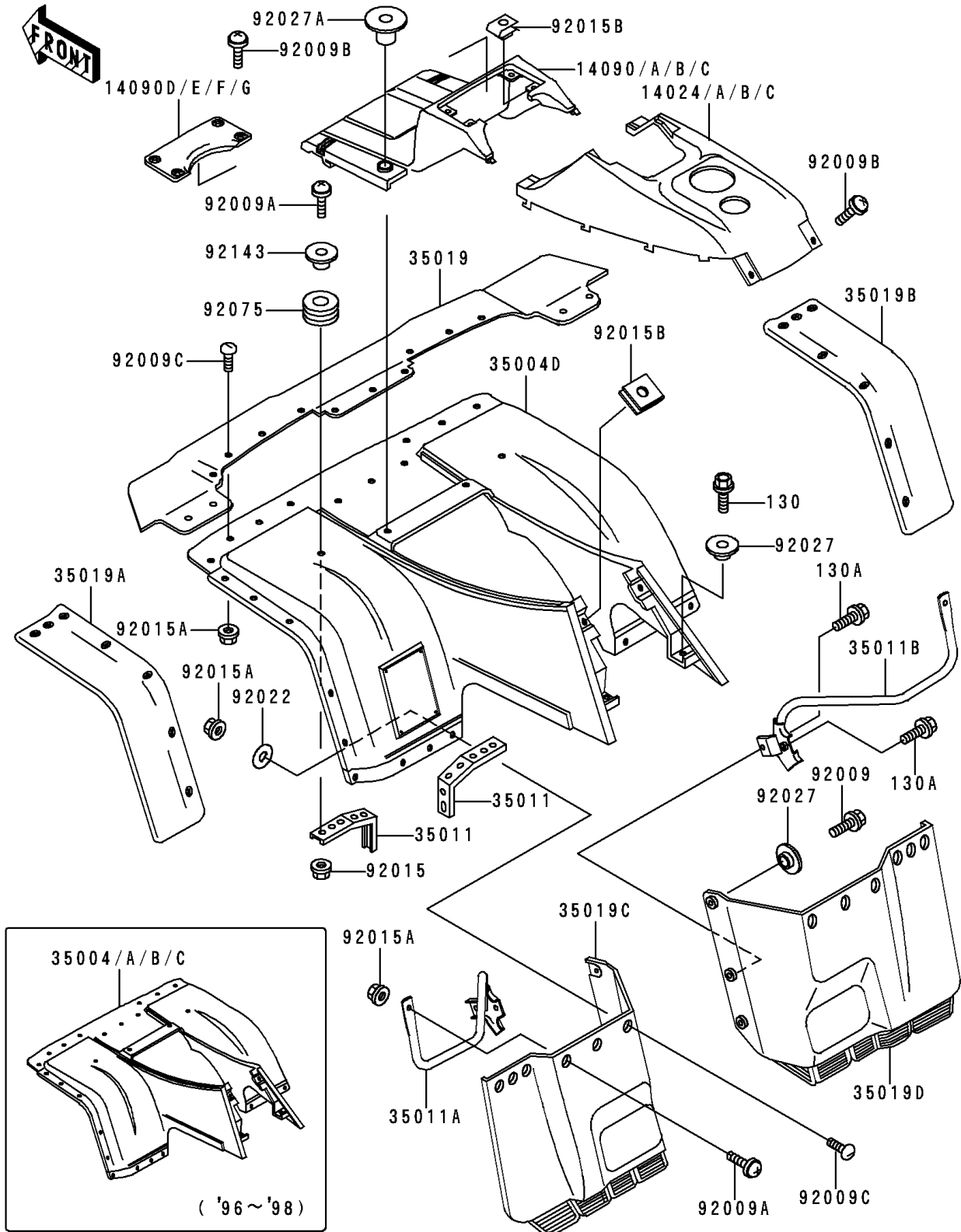


1998 Bayou 400 4X4 PARTS DIAGRAM

Front Fender(s)

F2171



1998 Bayou 400 4X4 PARTS LIST

Front Fender(s)

ITEM NAME	PART NUMBER	QUANTITY
BOLT-FLANGED,6X16 (Ref # 130)	130C0616	2
BOLT-FLANGED,6X18 (Ref # 130A)	130J0618	8
COVER,FRONT FENDER,RR,H.GREEN (Ref # 14024B)	14024-1657-6A	1
COVER,FRONT FENDER,FR,H.GREEN (Ref # 14090B)	14090-1143-6A	1
COVER,FRONT CAP,H.GREEN (Ref # 14090F)	14090-1156-6A	1
FENDER-FRONT,H.GREEN (Ref # 35004A)	35004-1293-6A	1
STAY,FRONT FENDER,UPP (Ref # 35011)	35011-1420	2
STAY,FR FENDER,LH,LWR FLAP (Ref # 35011A)	35011-1600	1
STAY,FR FENDER,RH,LWR FLAP (Ref # 35011B)	35011-1601	1
FLAP,FR,BLACK (Ref # 35019)	35019-1291-6Z	1
FLAP,FR,SIDE,LH,BLACK (Ref # 35019A)	35019-1292-6Z	1
FLAP,FR,SIDE,RH,BLACK (Ref # 35019B)	35019-1293-6Z	1
FLAP,FR,LWR,LH,BLACK (Ref # 35019C)	35019-1294-6Z	1
FLAP,FR,LWR,RH,BLACK (Ref # 35019D)	35019-1295-6Z	1
SCREW (Ref # 92009)	92009-1166	2
SCREW,6X22,BLACK (Ref # 92009A)	92009-1256	10
SCREW,6X14 (Ref # 92009B)	92009-1288	6
SCREW,6X16 (Ref # 92009C)	92009-1621	29
NUT,FLANGED,6MM,BLACK (Ref # 92015)	92015-1233	2
NUT,LOCK,FLANGED,6MM (Ref # 92015A)	92015-1675	37
NUT,CLAMP,6MM (Ref # 92015B)	92015-1678	6
WASHER,6.5X16X1.0 (Ref # 92022)	92022-1093	37
COLLAR,L=4.7 (Ref # 92027)	92027-122	8
COLLAR (Ref # 92027A)	92027-1929	2
DAMPER,CASE (Ref # 92075)	92075-222	2
COLLAR,L=9.6 (Ref # 92143)	92143-1016	2