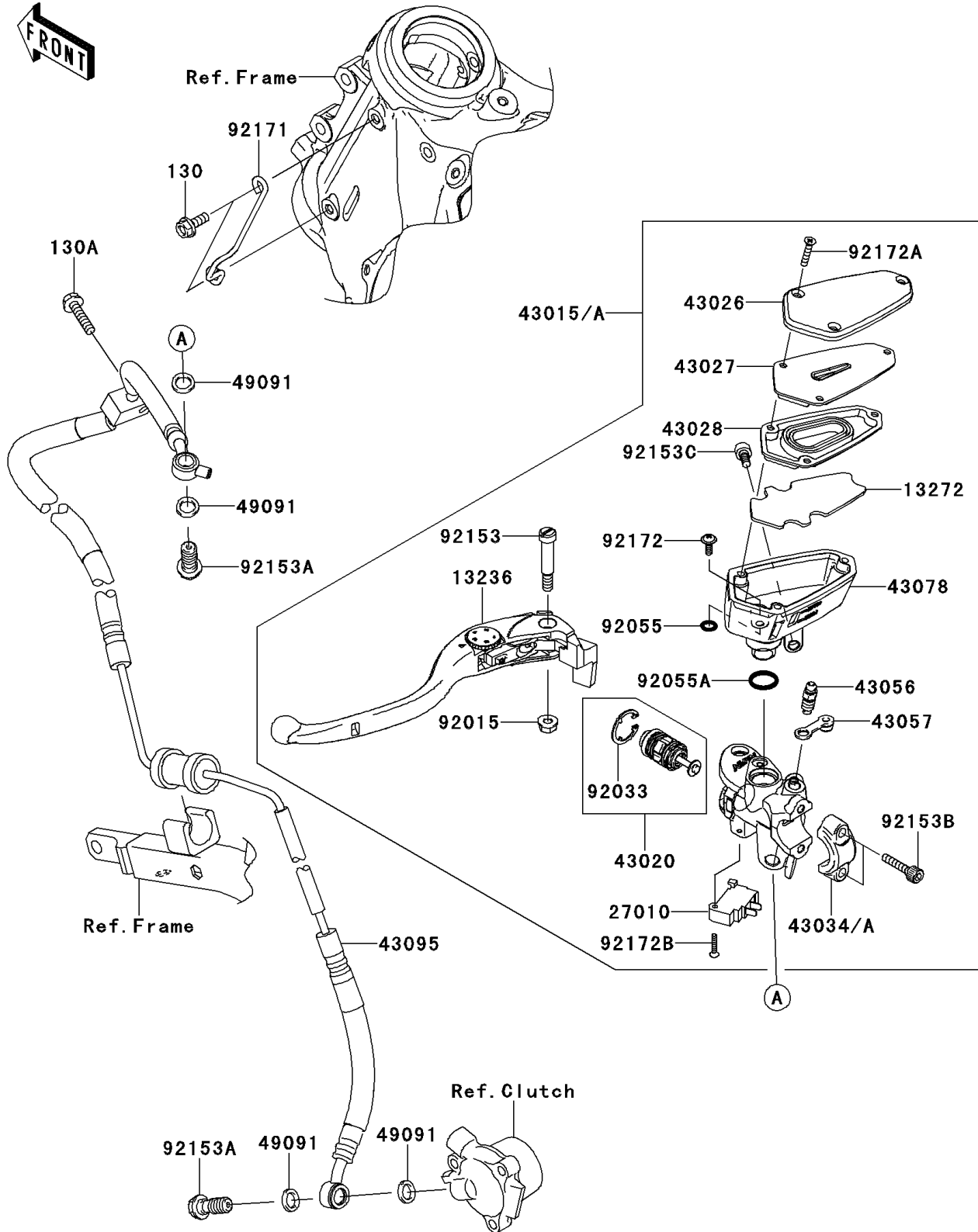


2009 Concours™ 14 PARTS DIAGRAM

Clutch Master Cylinder

F2380



2009 Concours™ 14 PARTS LIST

Clutch Master Cylinder

ITEM NAME	PART NUMBER	QUANTITY
BOLT-FLANGED,6X16 (Ref # 130)	130BA0616	2
BOLT-FLANGED,6X25 (Ref # 130A)	130BA0625	1
LEVER-COMP,CLUTCH (Ref # 13236)	13236-0104	1
PLATE (Ref # 13272)	13272-0220	1
SWITCH,CLUTCH (Ref # 27010)	27010-0051	1
CYLINDER-ASSY-MASTER,CLUTCH (Ref # 43015)	43015-0085	1
CYLINDER-ASSY-MASTER,CLUTCH (Ref # 43015A)	43015-0149	1
PISTON-COMP-BRAKE (Ref # 43020)	43020-0013	1
CAP-BRAKE (Ref # 43026)	43026-0012	1
PLATE-DIAPHRAGM (Ref # 43027)	43027-0003	1
DIAPHRAGM (Ref # 43028)	43028-0008	1
HOLDER-BRAKE,MASTER CYLINDER (Ref # 43034)	43034-0056	1
HOLDER-BRAKE,MASTER CYLINDER (Ref # 43034A)	43034-1016	1
BREATHER-BRAKE (Ref # 43056)	43056-1056	1
CAP-BREATHER (Ref # 43057)	43057-1001	1
RESERVOIR (Ref # 43078)	43078-0049	1
HOSE-BRAKE,CLUTCH (Ref # 43095)	43095-0298	1
WASHER-SEAL,10.1X14.5X1.5 (Ref # 49091)	49091-0001	4
NUT,FLANGED,6MM,BLACK (Ref # 92015)	92015-1233	1
RING-SNAP (Ref # 92033)	92033-0034	1
RING-O (Ref # 92055)	92055-0137	1
RING-O,MASTER CYLINDER (Ref # 92055A)	92055-1251	1
BOLT,LEVER (Ref # 92153)	92153-0868	1
BOLT,OIL,L=23 (Ref # 92153A)	92153-1419	2
BOLT,SOCKET,6X22 (Ref # 92153B)	92153-1518	2
BOLT,SOCKET,6X12 (Ref # 92153C)	92153-1853	1
CLAMP,CLUTCH HOSE (Ref # 92171)	92171-0633	1
SCREW (Ref # 92172)	92172-0319	1
SCREW,4X20 (Ref # 92172A)	92172-0320	3

2009 Concours™ 14 PARTS LIST

Clutch Master Cylinder

ITEM NAME	PART NUMBER	QUANTITY
SCREW,3X16 (Ref # 92172B)	92172-0349	1