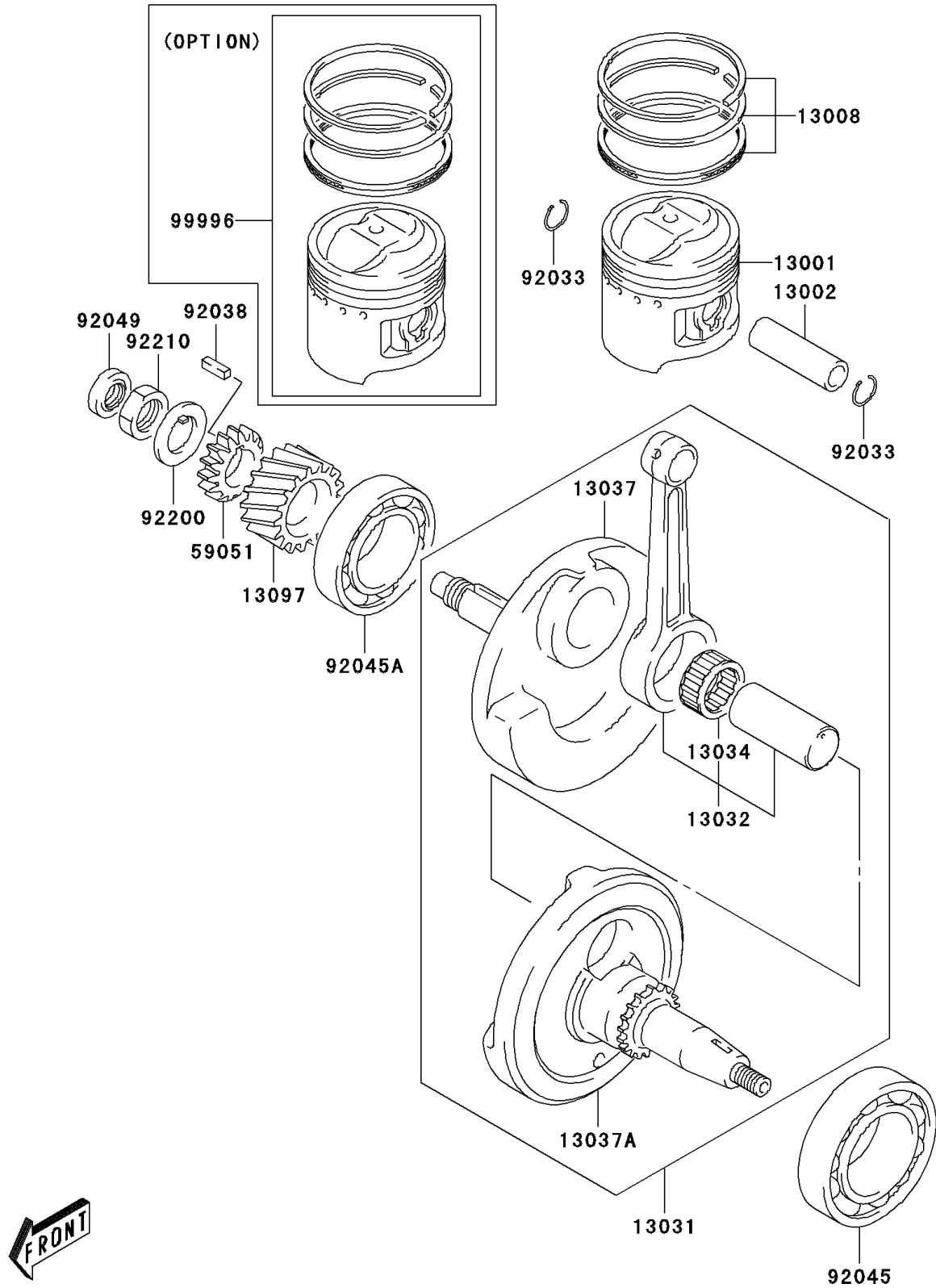


2003 KLX125 PARTS DIAGRAM

Crankshaft/Piston(s)

E1320



2003 KLX125 PARTS LIST

Crankshaft/Piston(s)

| ITEM NAME | PART NUMBER | QUANTITY |
|--|-------------|----------|
| PISTON-ENGINE (Ref # 13001) | 13001-S003 | 1 |
| PIN-PISTON (Ref # 13002) | 13002-S003 | 1 |
| RING-SET-PISTON (Ref # 13008) | 13008-S003 | 1 |
| CRANKSHAFT-COMP (Ref # 13031) | 13031-S003 | 1 |
| ROD-CONNECTING (Ref # 13032) | 13032-S003 | 1 |
| BEARING-BIG END,28X36X15.8 (Ref # 13034) | 13034-S003 | 1 |
| CRANKSHAFT,RH (Ref # 13037) | 13037-S005 | 1 |
| CRANKSHAFT,LH (Ref # 13037A) | 13037-S006 | 1 |
| GEAR-PRIMARY SPUR (Ref # 13097) | 13097-S003 | 1 |
| GEAR-SPUR,OIL PUMP DRIVE (Ref # 59051) | 59051-S001 | 1 |
| RING-SNAP (Ref # 92033) | 92033-S022 | 2 |
| KEY,PRIMARY DRIVE (Ref # 92038) | 92038-S003 | 1 |
| BEARING-BALL,35X72X17 (Ref # 92045) | 92045-S010 | 1 |
| BEARING-BALL,28X68X18 (Ref # 92045A) | 92045-S026 | 1 |
| SEAL-OIL,12X21X7 (Ref # 92049) | 92049-S001 | 1 |
| WASHER (Ref # 92200) | 92200-S058 | 1 |
| NUT (Ref # 92210) | 92210-S048 | 1 |
| KIT,PISTON O/S 0.50 (Ref # 99996) | 99996-S007 | 1 |